

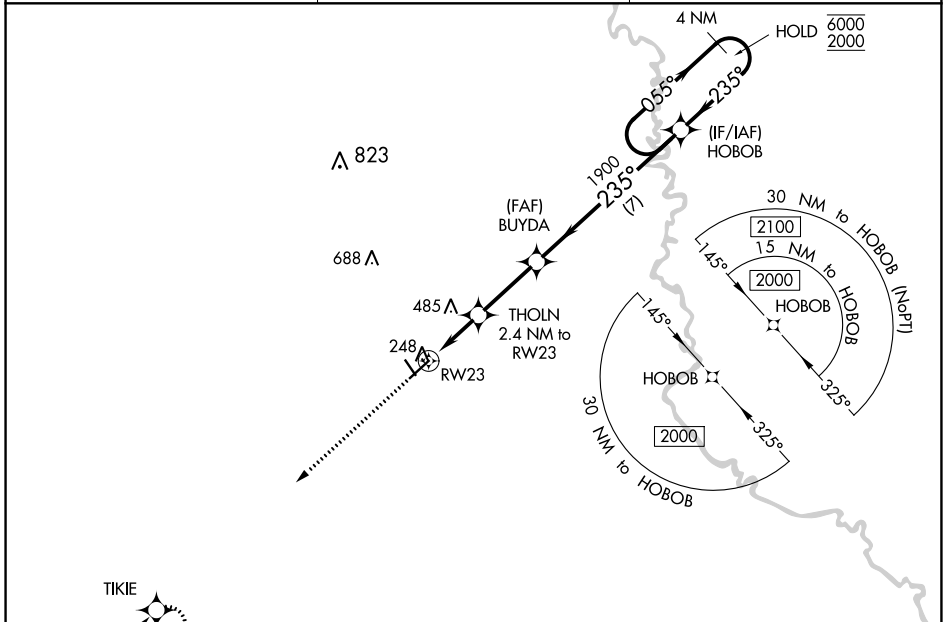
WAAS CH 93799 W23A	APP CRS 235°	Rwy ldg TDZE 190 Apt Elev 190	5501
--	------------------------	---	-------------

RNAV (GPS) RWY 23

PLANTATION AIRPARK (JYL)

RNP APCH.	MISSED APPROACH: Climb to 2500 direct TIKIE and hold.
<p>▼ Rwy 23 helicopter visibility reduction below 3/4 SM NA. For uncompensated Baro-VNAV systems, LNAV/VNAV NA below -1.5°C or above 54°C.</p>	

AWOS-3 118.875	JACKSONVILLE CENTER 132.925 363.2	UNICOM 122.8 (CTAF)
--------------------------	---	-------------------------------

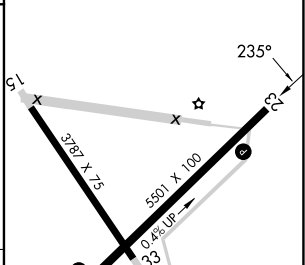
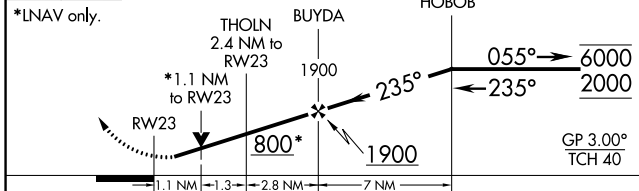


SE-4, 28 NOV 2024 to 26 DEC 2024

SE-4, 28 NOV 2024 to 26 DEC 2024

ELEV 190	TDZE 190
----------	----------

2500 TIKIE
 ↑
 VGSi and RNAV glidepath not coincident (VGSi Angle 3.00/TCH 31).
 4 NM Holding Pattern



CATEGORY	A	B	C	D
LPV DA		494-7/8	304 (400-7/8)	
LNAV/VNAV DA		623-1 1/4	433 (500-1 1/4)	
LNAV MDA	700-1 510 (600-1)		700-1 3/8 510 (600-1 3/8)	
CIRCLING	700-1 510 (600-1)	840-1 3/4 650 (700-1 3/4)	1040-2 3/4 850 (900-2 3/4)	

