

METTER, GEORGIA

AL-6844 (FAA)

21280

| | | | |
|--|------------------------|-----------------------------|---|
| WAAS CH 78438 W28A | APP CRS 280° | Rwy Idg TDZE Apt Elev | 5001 197 197 |
|--|------------------------|-----------------------------|---|

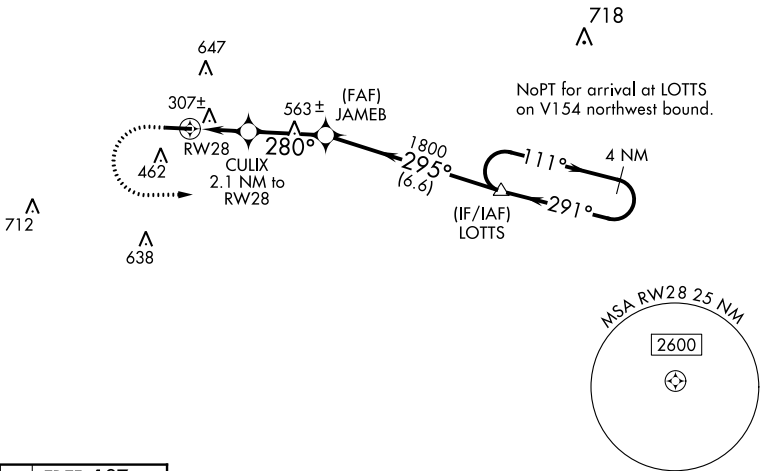
RNAV (GPS) RWY 28

JOHN EDWIN JONES SR FLD/METTER MUNI (MHP)

Baro-VNAV NA. DME/DME RNP-0.3 NA. Helicopter visibility reduction below 1 SM NA. Use Claxton altimeter setting; when not received, use Vidalia altimeter setting and increase LPV DA to 500, LNAV/VNAV DA to 533, increase all MDA 20 feet, increase LNAV/VNAV all Cats and LNAV Cat C/D visibility 1/8 mile and Circling Cat C/D visibility 1/4 mile.

MISSED APPROACH: Climb to 700 then climbing left turn to 3000 direct LOTTs and hold.

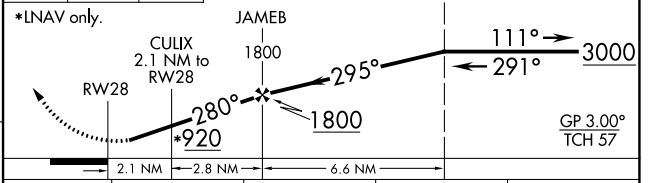
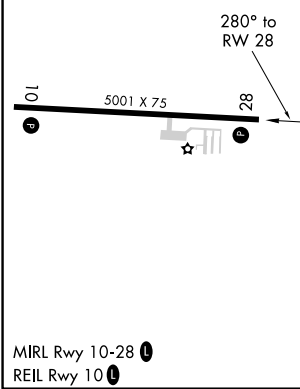
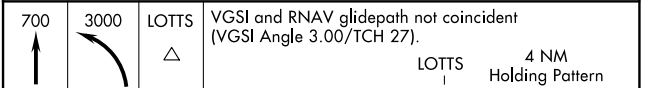
| | | | |
|--------------------------|------------------------------|---|---------------------------------|
| AWOS-3PT 120.3 | CWV AWOS-3 120.075 | JACKSONVILLE CENTER 132.925 363.2 | UNICOM 123.0 (CTAF) 0 |
|--------------------------|------------------------------|---|---------------------------------|



SE-4, 28 NOV 2024 to 26 DEC 2024

SE-4, 28 NOV 2024 to 26 DEC 2024

| | |
|-----------------|-----------------|
| ELEV 197 | TDZE 197 |
|-----------------|-----------------|



| CATEGORY | A | B | C | D |
|-------------------|----------------------|----------------------|-------------------------|-------------------------|
| LPV DA | 494-1 297 (300-1) | | | |
| LNAV/VNAV DA | 527-1 330 (400-1) | | | |
| LNAV MDA | 620-1 423 (500-1) | | 620-1¼ 423 (500-1¼) | |
| C CIRCLING | 820-1 623 (700-1) | 880-1 683 (700-1) | 1060-2½ 863 (900-2½) | 1060-2¾ 863 (900-2¾) |

METTER, GEORGIA
Amdt 1 26MAY16

JOHN EDWIN JONES SR FLD/METTER MUNI (MHP)
32°22'N-82°05'W
RNAV (GPS) RWY 28