

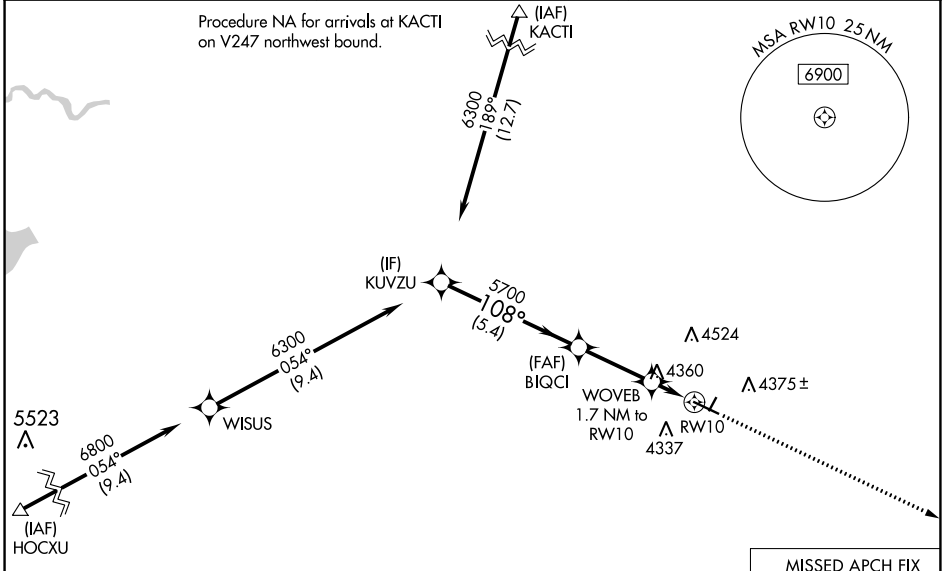
WAAS CH 61344 W10A	APP CRS 108°	Rwy Idg 5703 TDZE 4207 Apt Elev 4207
--	------------------------	---

RNAV (GPS) RWY 10

TORRINGTON MUNI (TOR)

RNP APCH - GPS.	MISSED APPROACH: Climb to 6200 direct CIKSI and hold.
<p>▼ For uncompensated Baro-VNAV systems, LNAV/VNAV NA below -26°C or above 54°C.</p>	

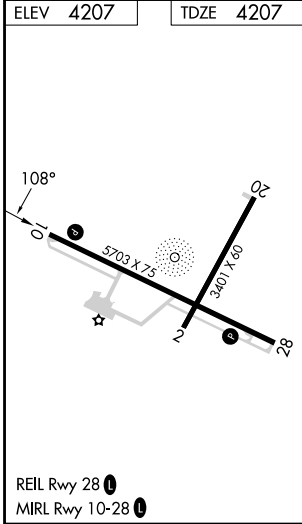
ASOS 118.375	DENVER CENTER 127.95 338.2	UNICOM 122.8 (CTAF) 0
------------------------	--------------------------------------	---------------------------------



NW-1, 28 NOV 2024 to 26 DEC 2024

NW-1, 28 NOV 2024 to 26 DEC 2024

ELEV 4207	TDZE 4207
------------------	------------------



KUVZU 6300 GP 3.00° TCH 40 5.4 NM BIQCI 5700 2.9 NM WOVEB 1.7 NM to RWY 10 4780 1.7 NM RWY 10	6200	CIKSI		
CATEGORY	A	B	C	D
LPV DA		4457-1	250 (300-1)	
LNAV/VNAV DA		4468-1	261 (300-1)	
LNAV MDA	4660-1	453 (500-1)	4660-1½	453 (500-1½)
CIRCLING	4740-1	533 (600-1)	4880-2 673 (700-2)	4960-2½ 753 (800-2½)