

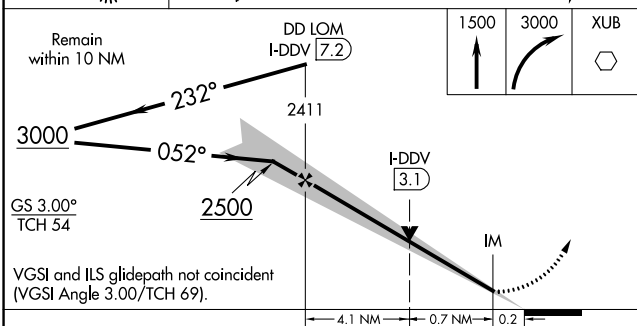
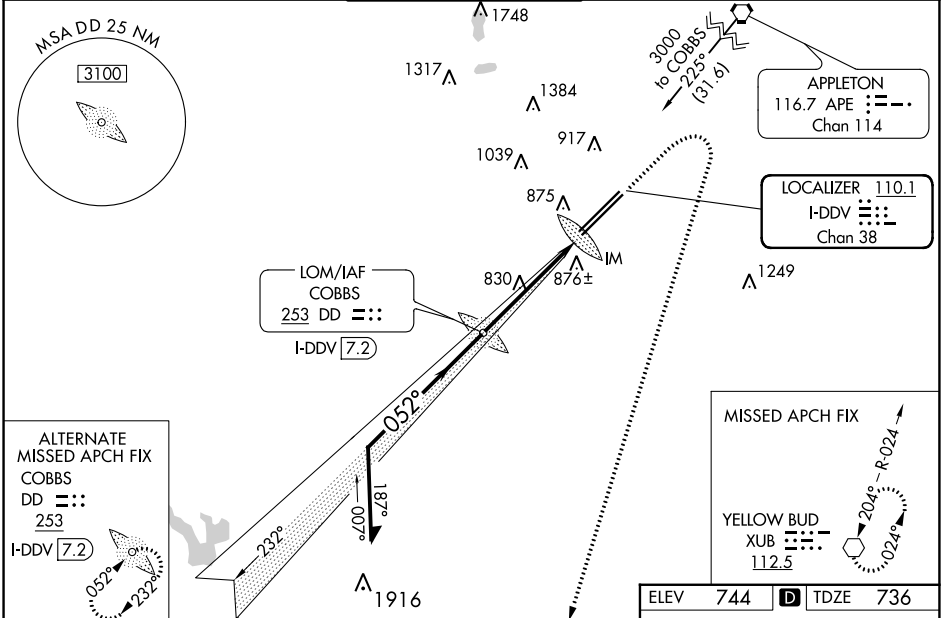
LOC/DME I-DDV 110.1 Chan 38	APP CRS 052°	Rwy Idg 12103 TDZE 736 Apt Elev 744
---	------------------------	--

ILS or LOC RWY 5R

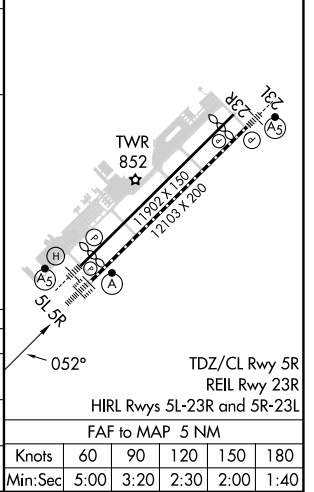
RICKENBACKER INTL (LCK)

ADF or DME required. ▲ NA Circling NA northwest of Rwy 5L-23R.		ALSF-2 	MISSED APPROACH: Climb to 1500 then climbing right turn to 3000 direct XUB VOR and hold.
---	--	------------	--

ATIS 132.75	COLUMBUS APP CON 134.0 279.6	RICK TOWER 120.05 348.4	GND CON 125.275 275.8	CLNC DEL 125.275 275.8
-----------------------	--	--	---------------------------------	----------------------------------



ELEV 744	D TDZE 736
----------	-------------------



CATEGORY	A	B	C	D
S-ILS 5R	936/18		200 (200-½)	
S-LOC 5R	1080/24	344 (400-½)		1080/30 344 (400-¾)
CIRCLING	1240-1	496 (500-1)		1280-1½ 536 (600-1½) 1400-2 656 (700-2)

Knots	60	90	120	150	180
Min:Sec	5:00	3:20	2:30	2:00	1:40

EC-2, 28 NOV 2024 to 26 DEC 2024

EC-2, 28 NOV 2024 to 26 DEC 2024