


WAAS CH <b>62811</b> <b>W23A</b>	APP CRS <b>232°</b>	Rwy Idg <b>12103</b> TDZE <b>740</b> Apt Elev <b>744</b>
--	------------------------	--

# RNAV (GPS) RWY 23L

RICKENBACKER INTL (LCK)

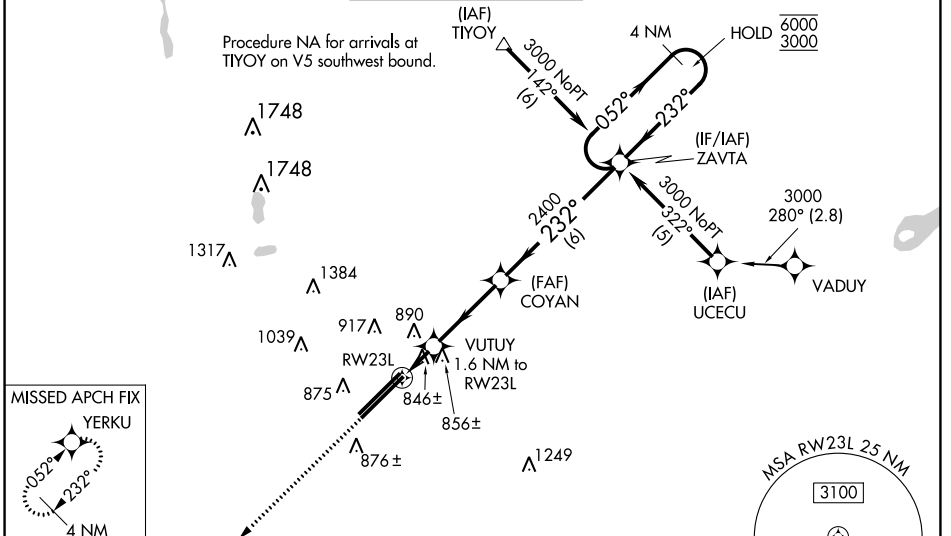
**RNP APCH - GPS.**

**⚠** For uncompensated Baro-VNAV systems, LNAV/VNAV NA below -16°C or above 54°C. Circling NA northwest of Rwy 5L-23R. Baro-VNAV NA when using John Glenn Columbus Intl altimeter setting. When local altimeter setting not received, use John Glenn Columbus Intl altimeter setting: increase LPV DA to 975 feet; increase LNAV/VNAV DA to 1157 feet and all visibilities to RVR 4000; increase all MDAs 40 feet and LNAV visibility Cats C/D to RVR 5000 and Circling Cat D to 2 1/4 SM.  
\* RVR 1800 authorized with use of FD or AP or HUD to DA, (NA when using John Glenn Columbus Intl altimeter setting).

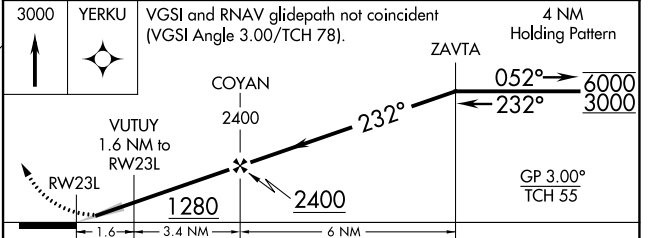
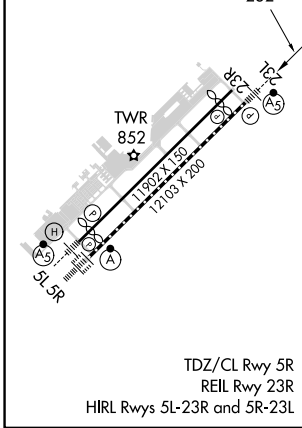
MALSR 

**MISSED APPROACH:**  
Climb to 3000 direct YERKU and hold.

ATIS <b>132.75</b>	COLUMBUS APP CON <b>134.0 279.6</b>	RICK TOWER <b>120.05 348.4</b>	GND CON <b>125.275 275.8</b>	CLNC DEL <b>125.275 275.8</b>
-----------------------	--	-----------------------------------	---------------------------------	----------------------------------



ELEV <b>744</b>	<b>D</b>	TDZE <b>740</b>
-----------------	----------	-----------------



CATEGORY	A	B	C	D
LPV DA *	940/24		200 (200-1/2)	
LNAV/VNAV DA	1122/35		382 (400-3/4)	
LNAV MDA	1180/24	440 (500-1/2)	1180/40	440 (500-3/4)
CIRCLING	1240-1	496 (500-1)	1280-1 1/2 536 (600-1 1/2)	1400-2 656 (700-2)

EC-2, 28 NOV 2024 to 26 DEC 2024

EC-2, 28 NOV 2024 to 26 DEC 2024