

WAAS CH <b>87108</b> <b>W18A</b>	APP CRS <b>181°</b>	Rwy Idg TDZE Apt Elev	<b>5001</b> <b>684</b> <b>685</b>
--	------------------------	-----------------------------	---

# RNAV (GPS) RWY 18

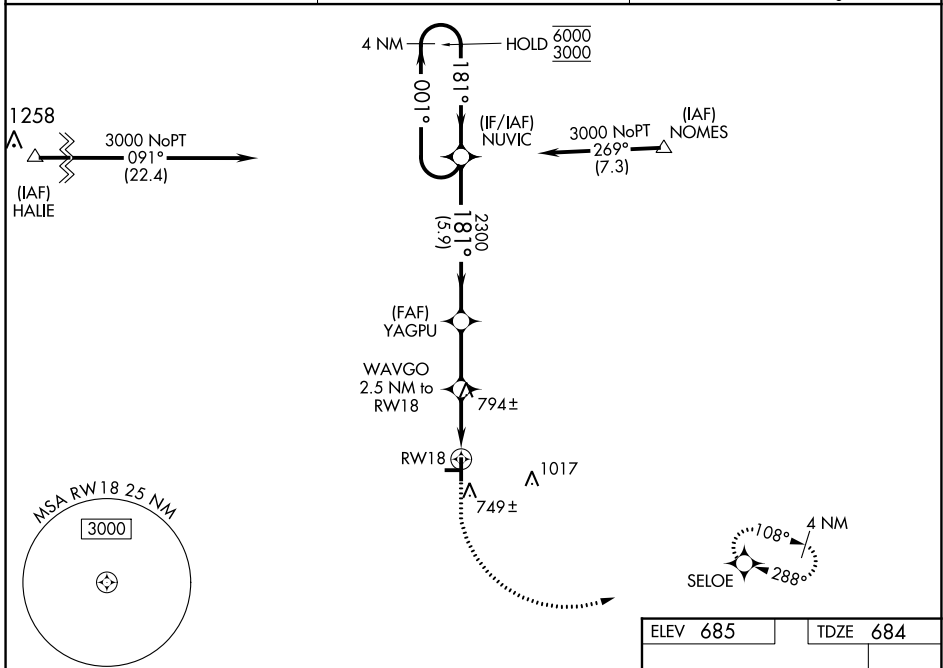
STARKE COUNTY(OXI)

RNP APCH - GPS.

▼ Baro-VNAV and VDP NA when using SBN altimeter setting. For uncompensated Baro-VNAV systems, LNAV/VNAV NA below -16°C or above 54°C. Circling NA to Rwys 9 and 27.  
 ▲ When local altimeter setting not received, use SBN altimeter setting: increase LPV DA to 1010 feet; increase LNAV/VNAV DA to 1136 feet and all visibilities 3/8 SM; increase all MDAs 80 feet and LNAV visibility Cat C and D 3/8 SM, and Circling visibility Cat C and D 1/4 SM.

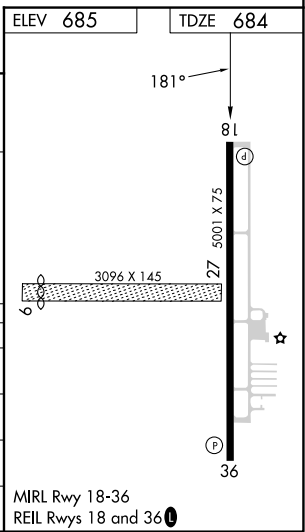
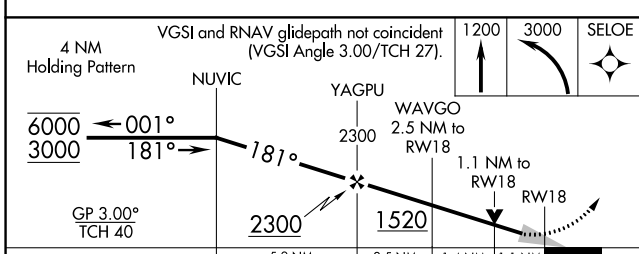
**MISSED APPROACH:**  
Climb to 1200 then climbing left turn to 3000 direct SELOE and hold.

AWOS-3 <b>135.775</b>	SOUTH BEND APP CON ★ <b>132.05 257.8</b>	UNICOM <b>122.8 (CTAF) 0</b>
--------------------------	---	---------------------------------



EC-2, 28 NOV 2024 to 26 DEC 2024

EC-2, 28 NOV 2024 to 26 DEC 2024



CATEGORY	A	B	C	D
LPV DA		934-1	250 (300-1)	
LNAV/VNAV DA		1060-1	376 (400-1)	
LNAV MDA		1060-1	376 (400-1)	
CIRCLING	1120-1 435 (500-1)	1140-1 455 (500-1)	1380-2 695 (700-2)	1380-2 1/4 695 (700-2 1/4)

MIRL Rwy 18-36  
REIL Rwys 18 and 36 0