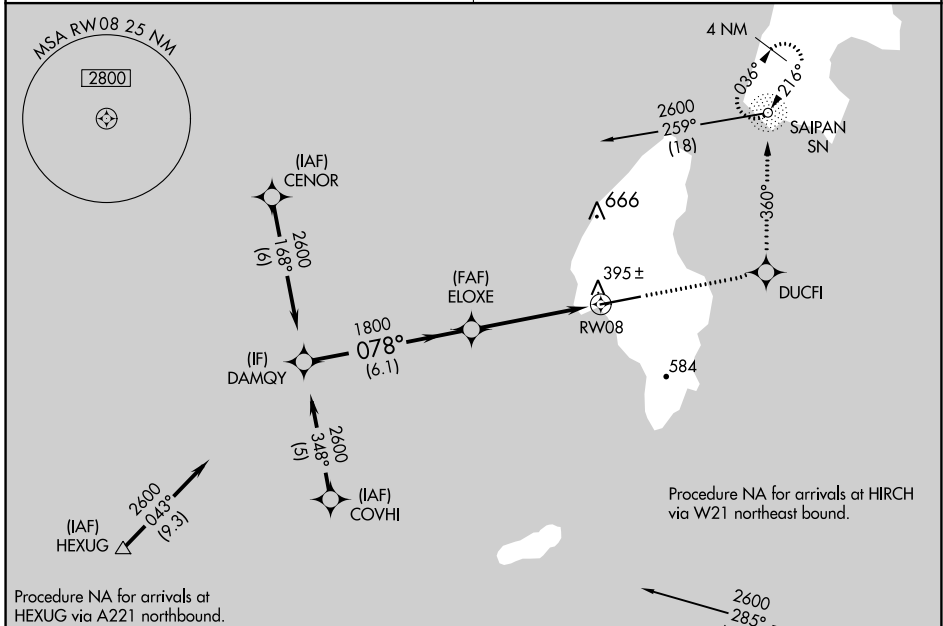


APP CRS	Rwy Idg	<b>8600</b>
<b>078°</b>	TDZE	<b>243</b>
	Apt Elev	<b>270</b>

# RNAV (GPS) RWY 8

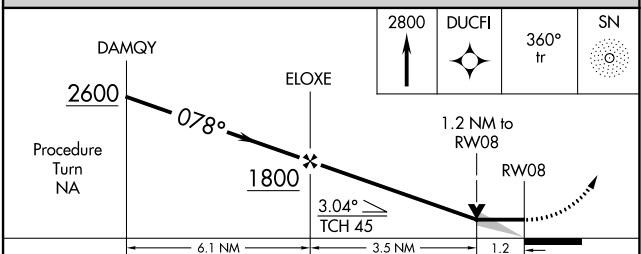
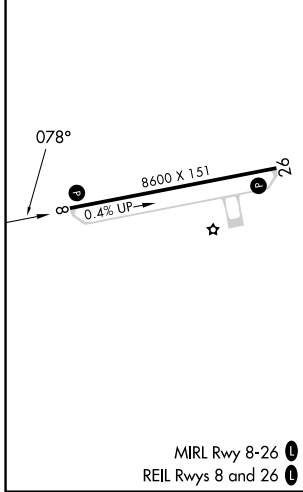
FRANCISCO MANGLONA BORJA/TINIAN INTL (TNI)(PGWT)

RNP APCH	Obtain local altimeter setting on CTAF; when not received, use Saipan altimeter setting. VDP NA when using Saipan altimeter setting.	MISSED APPROACH: Climb to 2800 direct DUCFI and via 360° track to SN NDB and hold, continue climb-in-hold to 2800.
GUAM CERAP	<b>118.4 290.5</b>	SAIPAN RADIO <b>123.6 (CTAF)</b>



Procedure NA for arrivals at HEXUG via A221 northbound.

ELEV 270	<b>D</b>	TDZE 243
----------	----------	----------



CATEGORY	A	B	C	D
LNAV MDA	660-1	417 (400-1)	660-1¼	417 (400-1¼)
<b>C</b> CIRCLING	760-1 490 (500-1)	860-1 590 (600-1)	1000-2 730 (800-2)	1060-2½ 790 (800-2½)
SAIPAN ALTIMETER SETTING MINIMUMS				
LNAV MDA	680-1	437 (500-1)	680-1¼	437 (500-1¼)
<b>C</b> CIRCLING	800-1 530 (600-1)	900-1 630 (700-1)	1040-2¼ 770 (800-2¼)	1100-2¾ 830 (900-2¾)

# RNAV (GPS) RWY 8

PAC, 31 OCT 2024 to 26 DEC 2024

PAC, 31 OCT 2024 to 26 DEC 2024

MIRL Rwy 8-26 **1**  
REIL Rws 8 and 26 **1**