

GARLAND FIVE DEPARTURE  
(GARLS.TT) 251AN24

FORT WORTH, TEXAS  
BOURLAND FLD (5MF)

LONE STAR DEP CON  
135.975 379.9  
CTAF  
123.0

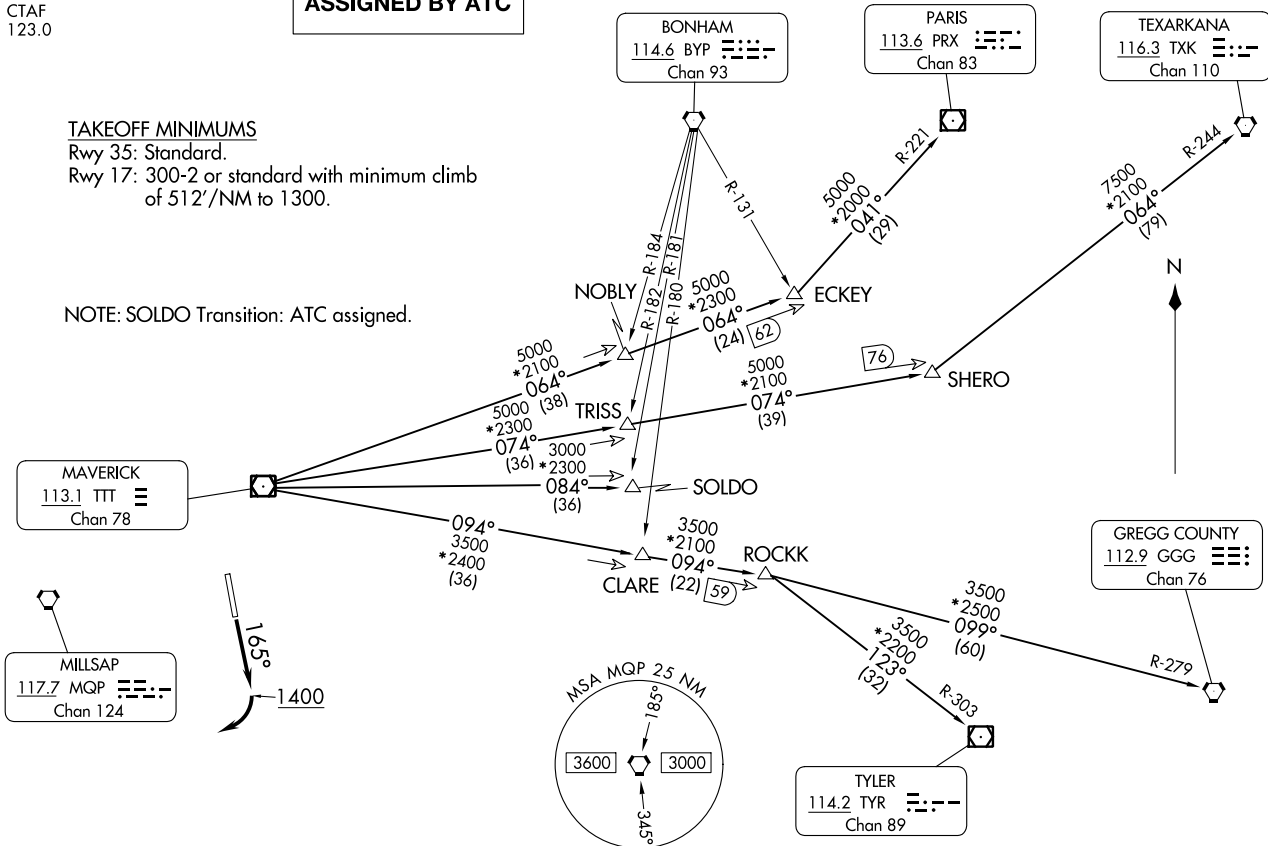
**TOP ALTITUDE:  
ASSIGNED BY ATC**

**RADAR and DME required.**

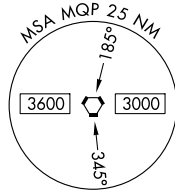
TAKEOFF MINIMUMS

Rwy 35: Standard.  
Rwy 17: 300-2 or standard with minimum climb  
of 512'/NM to 1300.

NOTE: SOLDO Transition: ATC assigned.



NOTE: Chart not to scale.



(CONTINUED ON FOLLOWING PAGE)

(GARLS.TT) 24305  
GARLAND FIVE DEPARTURE

AL-6854 (FAA)

BOURLAND FLD (5MF)  
FORT WORTH, TEXAS

# GARLAND FIVE DEPARTURE



## DEPARTURE ROUTE DESCRIPTION

TAKEOFF RUNWAY 17: Climb on heading 165° to 1400 before turning right.

When entering controlled airspace, fly assigned heading for RADAR vectors to appropriate route. Maintain ATC assigned altitude.

GREGG COUNTY TRANSITION (GARL5.GGG): From over TTT VOR/DME on TTT R-094 to ROCKK, then on GGG R-279 to GGG VORTAC.

PARIS TRANSITION (GARL5.PRX): From over TTT VOR/DME on TTT R-064 to ECKEY, then on PRX R-221 to PRX VOR/DME.

SOLDO TRANSITION (GARL5.SOLDO): From over TTT VOR/DME on TTT R-084 to SOLDO.

TEXARKANA TRANSITION (GARL5.TXK): From over TTT VOR/DME on TTT R-074 to SHERO, then on TXK R-244 to TXK VORTAC.

TYLER TRANSITION (GARL5.TYR): From over TTT VOR/DME on TTT R-094 to ROCKK, then on TYR R-303 to TYR VOR/DME.

SC-2, 28 NOV 2024 to 26 DEC 2024

SC-2, 28 NOV 2024 to 26 DEC 2024