

LONE STAR DEP CON
135.975 379.9
CTAF
123.0

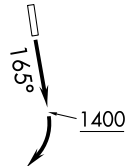
**TOP ALTITUDE:
ASSIGNED BY ATC**

NOTE: RNAV 1.
NOTE: DME/DME/IRU or GPS required.
NOTE: RADAR required.
NOTE: ALIAN Transition: ATC assigned only.

(SWABR1 .SWABR) 24305
SWABR ONE DEPARTURE (RNAV)

AL-6854 (FAA)

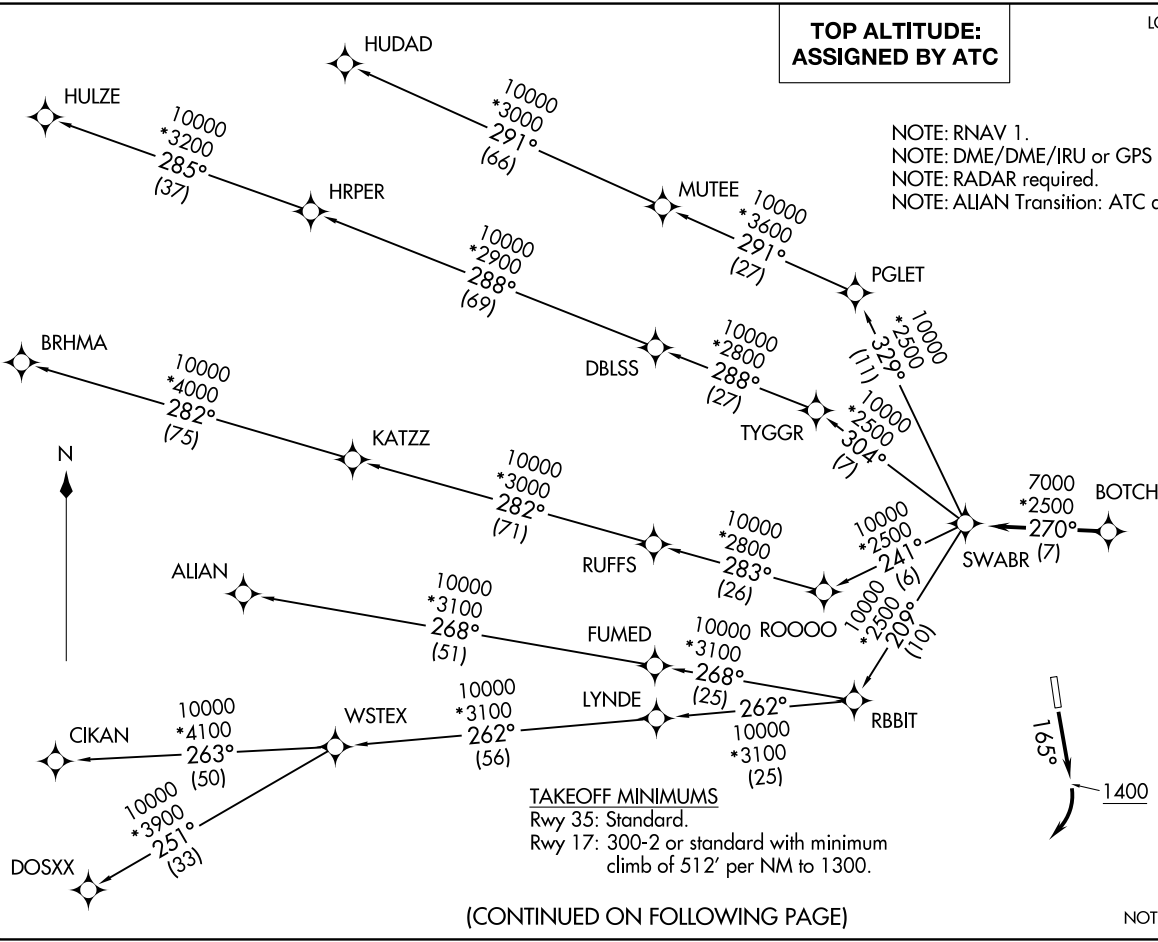
BOURLAND FLD (5MT)
FORT WORTH, TEXAS



TAKEOFF MINIMUMS
Rwy 35: Standard.
Rwy 17: 300-2 or standard with minimum
climb of 512' per NM to 1300.

(CONTINUED ON FOLLOWING PAGE)

NOTE: Chart not to scale.



SWABR ONE DEPARTURE (RNAV)
(SWABR1 .SWABR) 24MAR22

FORT WORTH, TEXAS
BOURLAND FLD (5MT)

SWABR ONE DEPARTURE (RNAV)



DEPARTURE ROUTE DESCRIPTION

TAKEOFF RUNWAY 17: Climb on heading 165° to 1400 before turning right.

When entering controlled airspace, fly heading assigned by ATC, expect vectors to BOTCH, then on track 270° to SWABR, then on assigned transition. Maintain ATC assigned altitude, expect filed altitude 10 minutes after departure.

- ALIAN TRANSITION (SWABR1.ALIAN)
- BRHMA TRANSITION (SWABR1.BRHMA)
- CIKAN TRANSITION (SWABR1.CIKAN)
- DOSXX TRANSITION (SWABR1.DOSXX)
- HUDAD TRANSITION (SWABR1.HUDAD)
- HULZE TRANSITION (SWABR1.HULZE)
- WSTEX TRANSITION (SWABR1.WSTEX)

SC-2, 28 NOV 2024 to 26 DEC 2024

SC-2, 28 NOV 2024 to 26 DEC 2024