

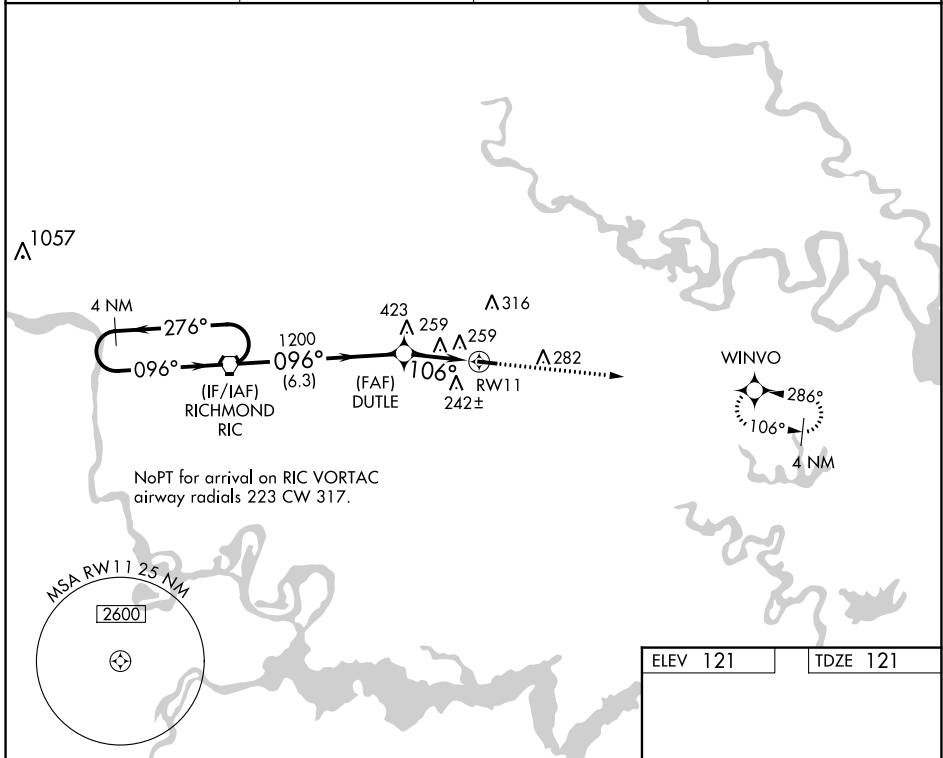
WAAS CH 45932 W11A	APP CRS 106°	Rwy Idg TDZE Apt Elev	3602 121 121
--	------------------------	-----------------------------	---

RNAV (GPS) RWY 11

NEW KENT COUNTY (W96)

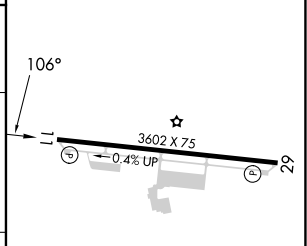
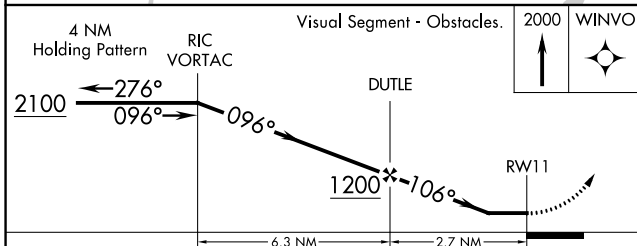
NA	Use Richmond Intl altimeter setting. DME/DME RNP-0.3 NA. Helicopter visibility reduction below 1 SM NA. Procedure NA at night.	MISSED APPROACH: Climb to 2000 direct WINVO and hold.
----	--	---

AWOS-3 119.875	RIC ASOS 119.15 263.025	POTOMAC APP CON 126.4 282.375	UNICOM 122.8 (CTAF) 0
--------------------------	-----------------------------------	---	---------------------------------



NoPT for arrival on RIC VORTAC
airway radials 223 CW 317.

ELEV 121	TDZE 121
----------	----------



CATEGORY	A	B	C	D
LP MDA	540-1	419 (500-1)	540-1 1/8 419 (500-1 1/8)	NA
LNAV MDA	560-1	439 (500-1)	560-1 1/4 439 (500-1 1/4)	NA
CIRCLING	620-1	499 (500-1)	760-1 3/4 639 (700-1 3/4)	NA

MIRL Rwy 11-29 0
REIL Rwys 11 and 29 0

NE-3, 28 NOV 2024 to 26 DEC 2024

NE-3, 28 NOV 2024 to 26 DEC 2024