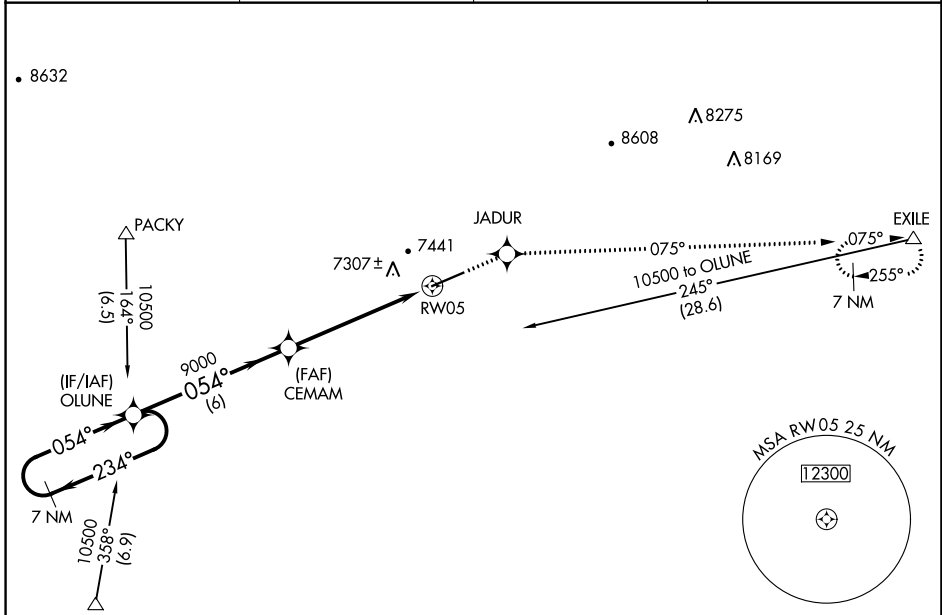


WAAS CH <b>78302</b> <b>W05A</b>	APP CRS <b>054°</b>	Rwy Idg TDZE Apt Elev	<b>7300</b> <b>7141</b> <b>7143</b>
--	------------------------	-----------------------------	---

# RNAV (GPS) RWY 5

EVANSTON-UINTA COUNTY BURNS FLD (E V W)

<b>RNP APCH.</b> ▼ If local altimeter setting not received, procedure NA. For uncompensated Baro-VNAV systems, LNAV/VNAV NA below -29°C (-20°F) or above 34°C (94°F).		MISSED APPROACH: Climb to 12000 direct JADUR and via 075° track to EXILE and hold, continue climb-in-hold to 12000.	
ASOS <b>120.0</b>	SALT LAKE CENTER <b>127.7 354.125</b>	GCO <b>121.72</b>	UNICOM <b>123.0</b> (CTAF) <b>0</b>



NW-1, 28 NOV 2024 to 26 DEC 2024

NW-1, 28 NOV 2024 to 26 DEC 2024

ELEV 7143		TDZE 7141	
• 9195 VGSI and RNAV glidepath not coincident (VGSI Angle 3.00/TCH 45). 7 NM Holding Pattern OLUNE CEMAM *RNAV only *0.8 NM to RW05 GP 3.00° TCH 55 10500 ← 234° → 054° → 054° → 9000 → 6 NM → 4.8 NM → 0.8 NM → RW05			
12000 JADUR ↑ ✨		EXILE 075° tr ▲	
CATEGORY	A	B	C
LPV DA		7391-3/4	250 (300-3/4)
LNAV/VNAV DA		7643-13/4	502 (500-13/4)
LNAV MDA		7440-1	299 (300-1)
REIL Rwy 5 <b>0</b>		HIRL Rwy 5-23 <b>0</b>	