


|                           |                        |                             |   |
|---------------------------|------------------------|-----------------------------|---|
| LOC I-AEG<br><b>110.1</b> | APP CRS<br><b>215°</b> | Rwy Idg<br>TDZE<br>Apt Elev | <b>7398</b><br><b>5817</b><br><b>5837</b> |
|---------------------------|------------------------|-----------------------------|---|

# ILS or LOC RWY 22

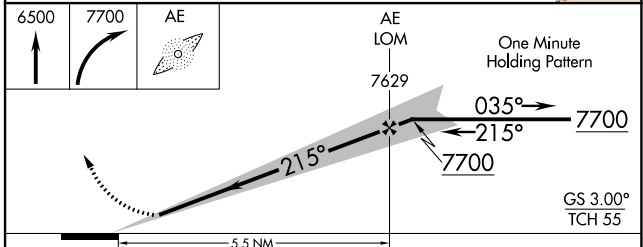
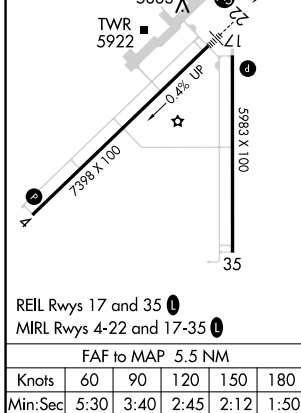
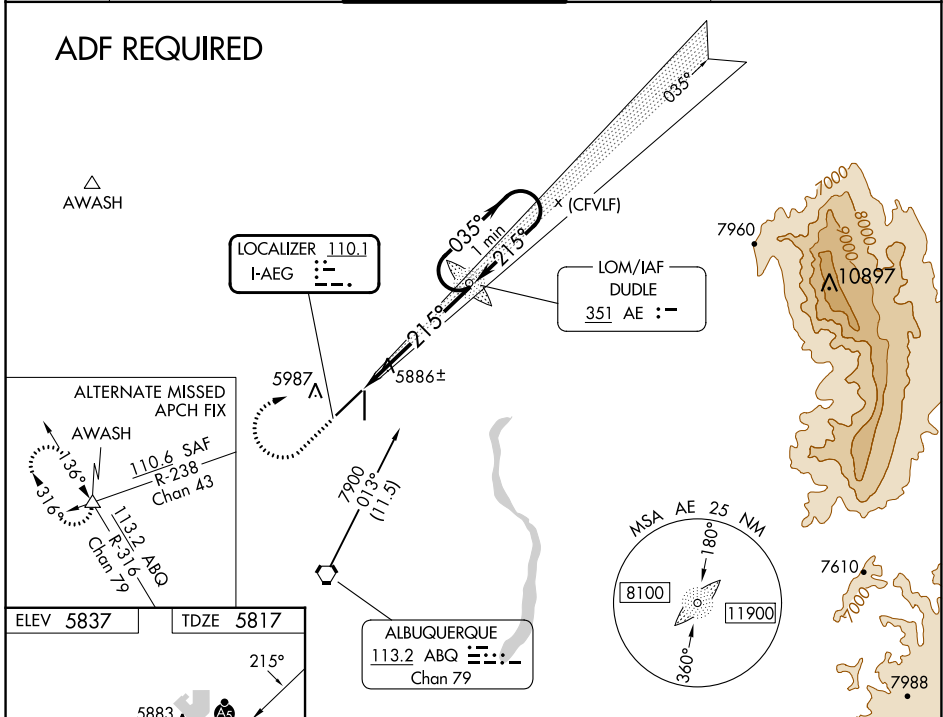
## DOUBLE EAGLE II (A/E/G)

**NA** When local altimeter setting not received, use Albuquerque Intl Suport altimeter setting and increase all DA 94 feet, increase all MDA 100 feet, and increase visibility S-LOC 22 Cats C/D ¼ mile, Circling Cats C/D ½ mile. For inop MALSRS when using Albuquerque Intl Suport altimeter setting, increase visibility S-ILS 22 all Cats ⅔ mile.

**MALSRS**  **MISSED APPROACH:** Climb to 6500 then climbing right turn 7700 direct DUDLE LOM and hold.

|                        |   |   |                           |   |
|------------------------|---|---|---------------------------|---|
| ATIS<br><b>119.025</b> | ALBUQUERQUE APP CON<br><b>127.4 253.5</b> | DOUBLE EAGLE II TOWER *<br><b>120.15 (CTAF)</b> | GND CON<br><b>121.625</b> | CLNC DEL<br><b>124.8</b><br>(When twr closed) |
|------------------------|---|---|---------------------------|---|

### ADF REQUIRED



| CATEGORY                                     | A                  | B           | C                       | D                       |
|--|--------------------|-------------|-------------------------|-------------------------|
| S-ILS 22                                     | 6017-½ 200 (200-½) |             |                         |                         |
| S-LOC 22                                     | 6140-½ 323 (400-½) |             |                         |                         |
| <input checked="" type="checkbox"/> CIRCLING | 6400-1             | 563 (600-1) | 6420-1½<br>583 (600-1½) | 6640-2½<br>803 (900-2½) |

SW-1, 28 NOV 2024 to 26 DEC 2024

SW-1, 28 NOV 2024 to 26 DEC 2024