

WAAS CH <b>56339</b> <b>W04A</b>	APP CRS <b>035°</b>	Rwy Idg <b>7398</b> TDZE <b>5837</b> Apt Elev <b>5837</b>
--	------------------------	---

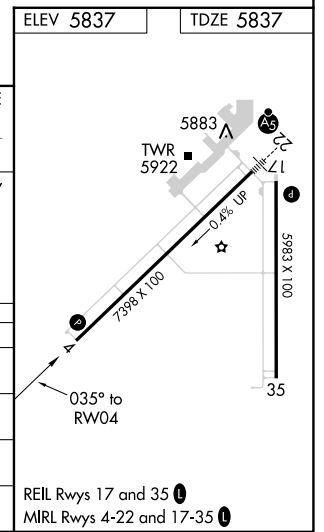
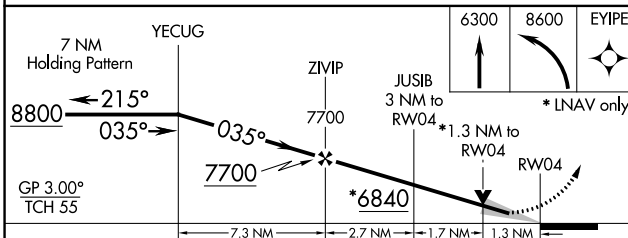
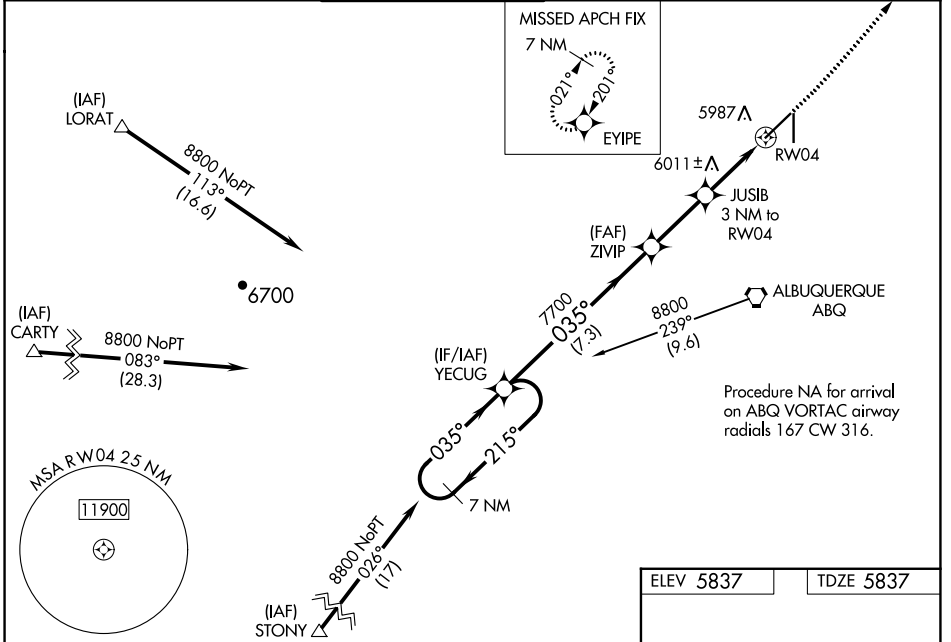
# RNAV (GPS) RWY 4

## DOUBLE EAGLE II (A/E/G)

**⚠** DME/DME RNP-0.3 NA. When local altimeter setting not received, use Albuquerque Intl Support altimeter setting and increase LPV DA to 6131 feet and LNAV/VNAV DA to 6384 feet, increase all MDA 100 feet, and increase LPV all Cats visibility 1/8 mile, LNAV/VNAV all Cats visibility 3/8 mile, LNAV visibility Cat C/D 1/4 mile, and Circling visibility Cats C/D 1/2 mile. Baro-VNAV and VDP NA when using Albuquerque Intl Support altimeter setting. For uncompensated Baro-VNAV systems, LNAV/VNAV NA below -26°C (-14°F) or above 46°C (114°F).

**MISSED APPROACH:** Climb to 6300 then climbing left turn to 8600 direct EYIPE and hold.

ATIS <b>119.025</b>	ALBUQUERQUE APP CON <b>127.4 253.5</b>	<b>DOUBLE EAGLE II TOWER ★</b> <b>120.15 (CTAF) 0</b>	GND CON <b>121.625</b>	CLNC DEL <b>124.8</b> (When twr closed)
------------------------	---	--	---------------------------	---



CATEGORY	A	B	C	D
LPV DA		6037-3/4	200 (200-3/4)	
LNAV/VNAV DA		6290-1 1/2	453 (500-1 1/2)	
LNAV MDA	6300-1	463 (500-1)	6300-1 3/8	463 (500-1 3/8)
<b>C</b> CIRCLING	6400-1	563 (600-1)	6420-1 1/2 583 (600-1 1/2)	6640-2 1/2 803 (900-2 1/2)

SW-1, 28 NOV 2024 to 26 DEC 2024

SW-1, 28 NOV 2024 to 26 DEC 2024