

APP CRS	Rwy Idg	4220
185°	TDZE	339
	Apt Elev	345

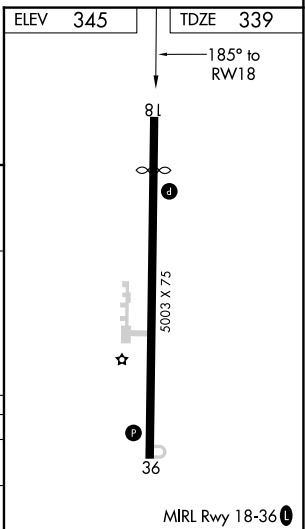
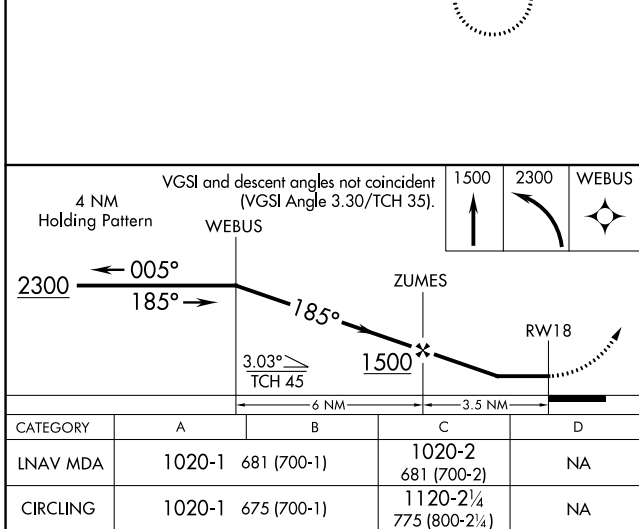
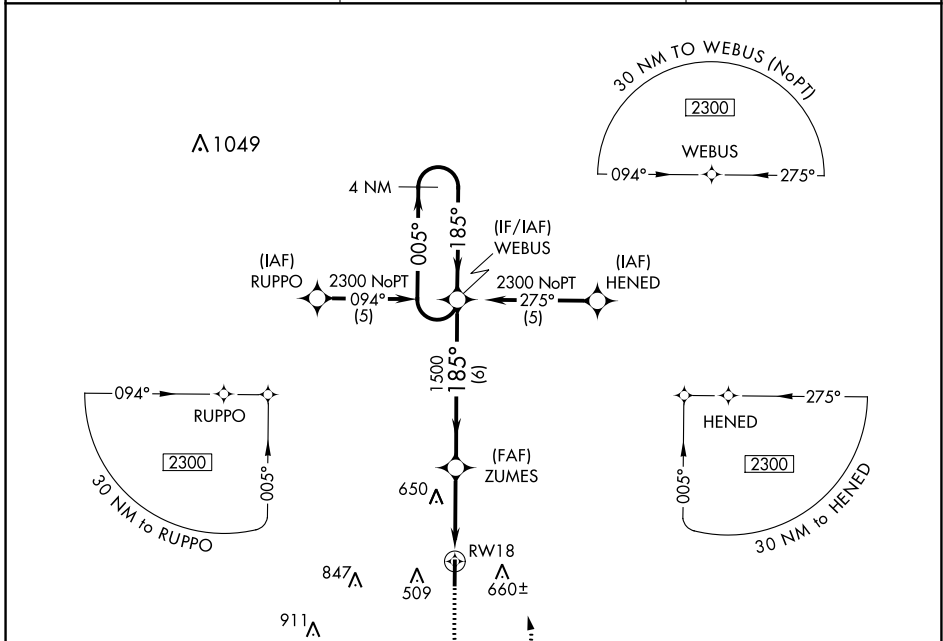
RNAV (GPS) RWY 18

DR C P SAVAGE SR (53A)

NA DME/DME RNP-0.3 NA. Procedure NA at night. Helicopter visibility reduction below 1 SM NA. Use Americus altimeter setting, when not received use Macon altimeter setting and increase all MDA 20 feet.

MISSED APPROACH: Climb to 1500 then climbing left turn to 2300 direct WEBUS and hold.

ACJ AWOS-3 128.375	ATLANTA APP CON * 124.2 279.6	CTAF 122.9
------------------------------	---	----------------------



SE-4, 28 NOV 2024 to 26 DEC 2024

SE-4, 28 NOV 2024 to 26 DEC 2024