

APP CRS	Rwy Idg	N/A
065°	TDZE	N/A
	Apt Elev	1821

RNAV (GPS)-D

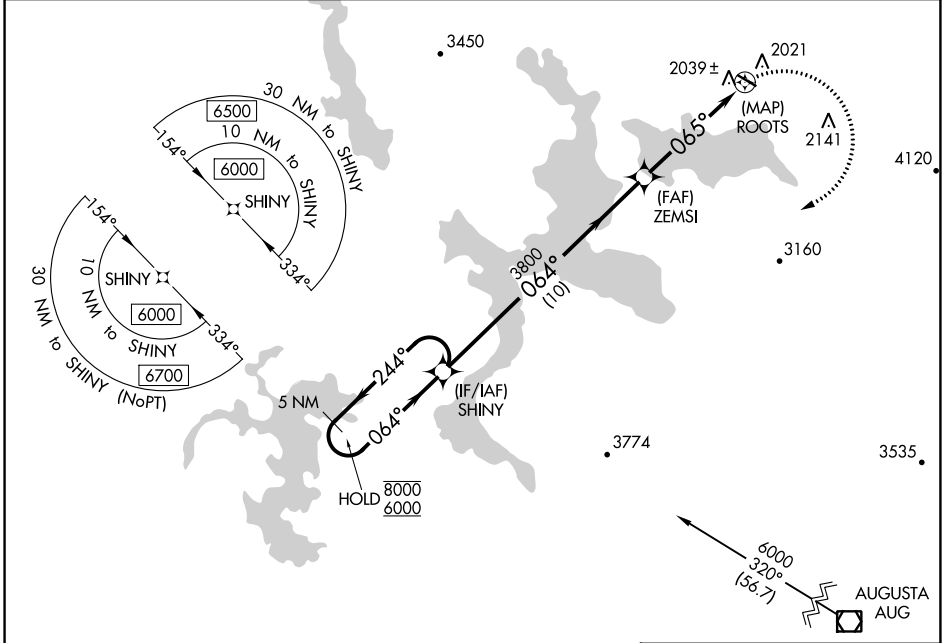
STEPHEN A BEAN MUNI (8BØ)

RNP APCH - GPS.

Circling Rwy 32 NA at night.
 -30°C

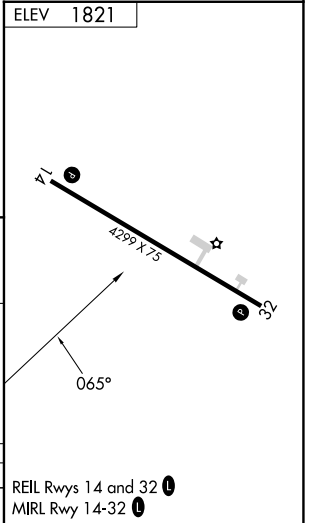
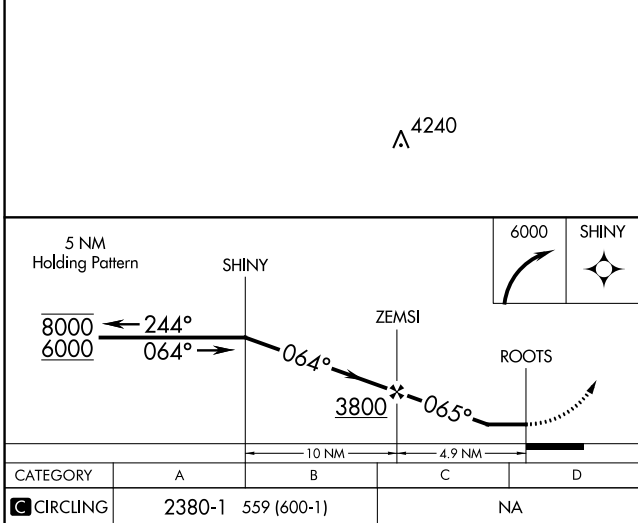
MISSED APPROACH: Climbing right turn to 6000 direct SHINY and hold, continue climb-in-hold to 6000.

AWOS-3PT 118.0	BOSTON CENTER 124.25 290.5	UNICOM 122.8 (CTAF) Ø
--------------------------	--------------------------------------	---------------------------------



NE-1, 28 NOV 2024 to 26 DEC 2024

NE-1, 28 NOV 2024 to 26 DEC 2024



CATEGORY	A	B	C	D
Ø CIRCLING	2380-1	559 (600-1)		NA

REIL Rwys 14 and 32 Ø
 MIRL Rwy 14-32 Ø

RNAV (GPS)-D