

WAAS CH <b>40036</b> <b>W21A</b>	APP CRS <b>211°</b>	Rwy Idg TDZE Apt Elev	<b>4002</b> <b>899</b> <b>899</b>
--	------------------------	-----------------------------	---

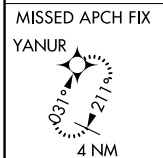
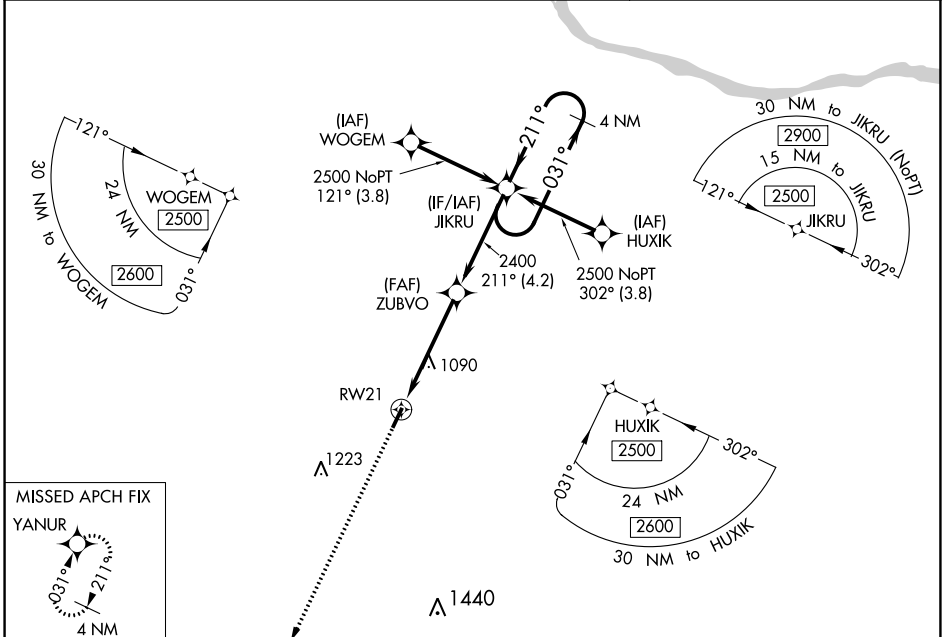
# RNAV (GPS) RWY 21

GENE SNYDER (K62)

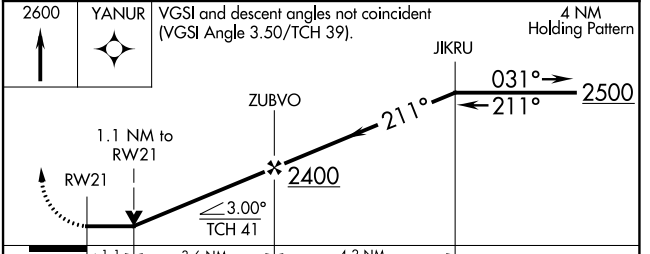
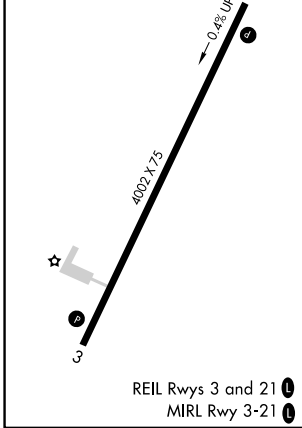
**⚠ NA** DME/DME RNP-0.3 NA. When local altimeter setting not received, use Cincinnati/Northern Kentucky Intl altimeter setting and increase all MDA 60 feet. Night landing: Rwy 03 NA. Helicopter visibility reduction below ¼ SM NA. VDP NA when using Cincinnati/Northern Kentucky Intl altimeter setting.

MISSED APPROACH: Climb to 2600 direct YANUR and hold.

AWOS-3 <b>123.825</b>	CINCINNATI APP CON <b>121.0 254.25</b>	UNICOM <b>122.7 (CTAF) 0</b>
--------------------------	---	---------------------------------



ELEV 899	TDZE 899
----------	----------



2600	YANUR	VGSI and descent angles not coincident (VGSI Angle 3.50/TCH 39).	4 NM Holding Pattern		
CATEGORY		A	B	C	D
LP	MDA	1340-1	441 (500-1)		NA
LN	MDA	1360-1	461 (500-1)		NA
<b>C</b>	CIRCLING	1400-1	501 (600-1)		NA

SE-1, 28 NOV 2024 to 26 DEC 2024

SE-1, 28 NOV 2024 to 26 DEC 2024