

APP CRS Rwy Idg **3490**
 177° TDZE **1041**
 Apt Elev **1041**

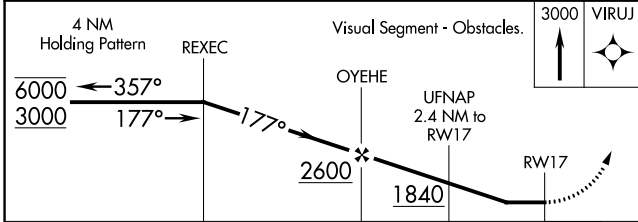
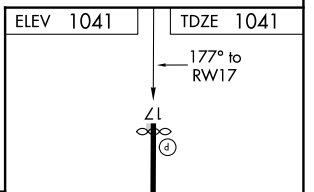
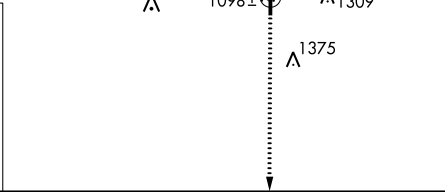
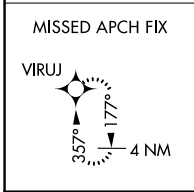
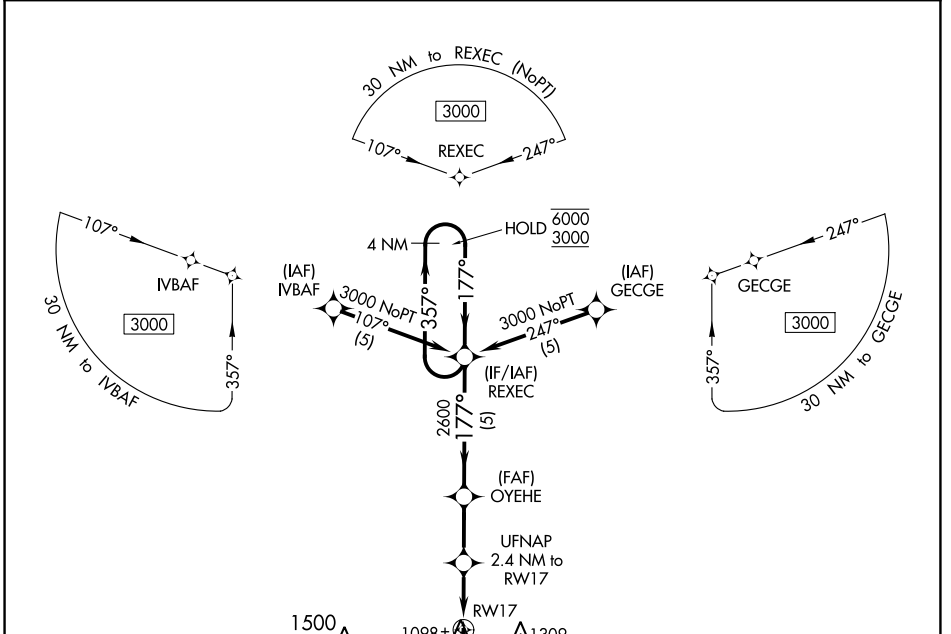
RNAV (GPS) RWY 17

PRAGUE MUNI (O47)

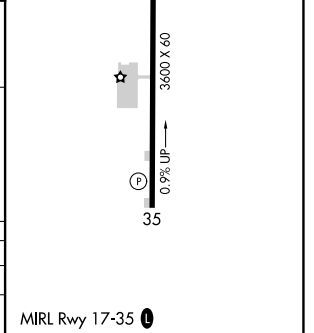
RNP APCH. Procedure NA at night. Rwy 17 helicopter visibility reduction below 1 SM NA.
 NA Use Shawnee altimeter setting. When not received, use Seminole altimeter setting.

MISSED APPROACH: Climb to 3000 direct VIRUJ and hold.

FORT WORTH CENTER **132.2 338.35** CTAF **122.9 0**



CATEGORY	A	B	C	D
LNAV MDA	1400-1	359 (400-1)		NA
CIRCLING	1480-1 439 (500-1)	1500-1 459 (500-1)	1720-2 679 (700-2)	NA



SC-1, 28 NOV 2024 to 26 DEC 2024

SC-1, 28 NOV 2024 to 26 DEC 2024