

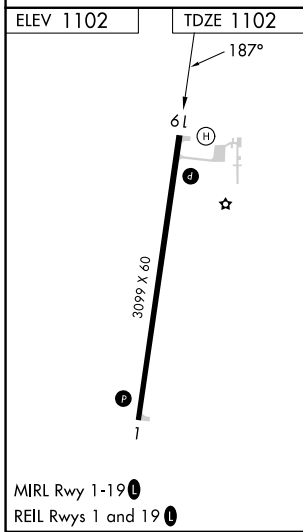
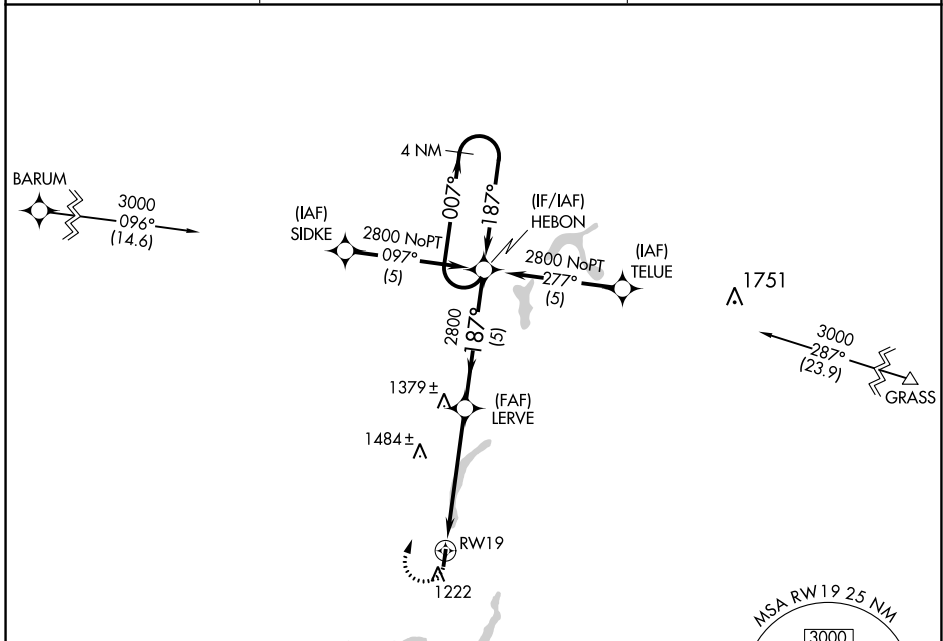
APP CRS	Rwy Idg	3099
187°	TDZE	1102
	Apt Elev	1102

RNAV (GPS) RWY 19

SOLO SPRINGS MUNI (OLG)

RNP APCH.	MISSED APPROACH: Climbing right turn to 2800 direct HEBON WP and hold.
<p>▼ Straight-in Rwy 19 NA at night, Circling Rwy 19 NA at night. Rwy 19 helicopter visibility reduction below 1 SM NA.</p>	

AWOS-3 119.6	DULUTH APP CON 125.45 233.7	CTAF 122.9 0
------------------------	---------------------------------------	------------------------



2800	HEBON	Visual Segment - Obstacles.	4 NM Holding Pattern	
CATEGORY	A	B	C	D
LNAV MDA	1800-1	698 (700-1)	1800-2 698 (700-2)	NA
C CIRCLING	1800-1	698 (700-1)	1800-2 698 (700-2)	NA

EC-3, 28 NOV 2024 to 26 DEC 2024

EC-3, 28 NOV 2024 to 26 DEC 2024