

APP CRS	Rwy Idg	5752
058°	TDZE	10
	Apt Elev	12

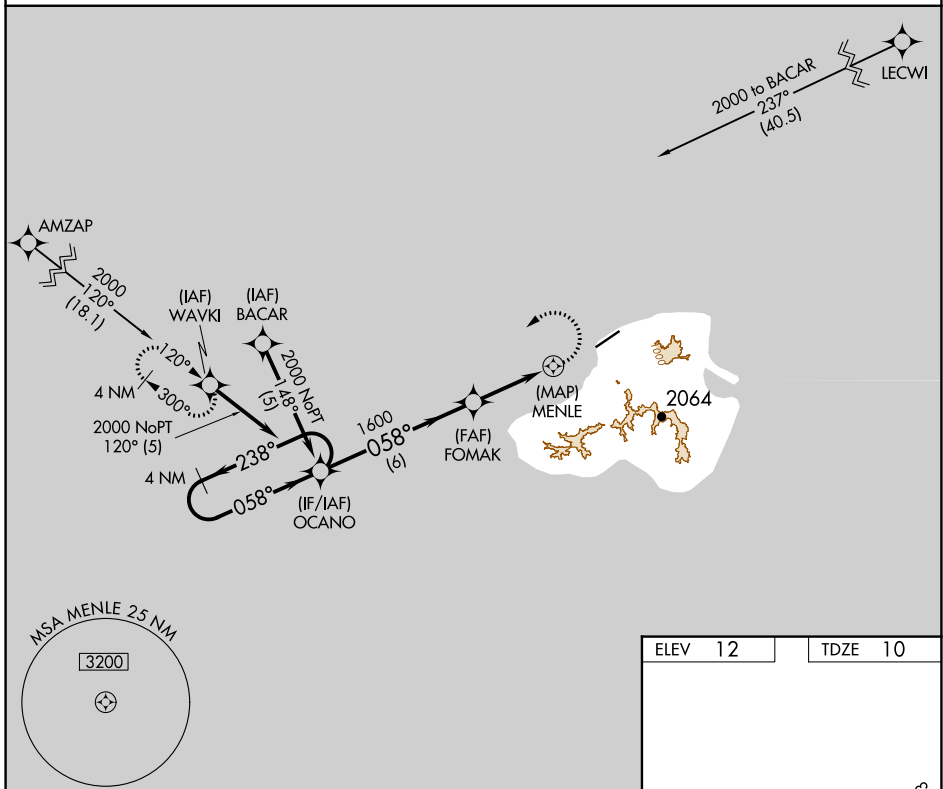
RNAV (GPS) RWY 5

KOSRAE (TTK)(PTSA)

⚠ Circling not authorized southeast of Rwy 5-23.
⚠ Obtain local altimeter setting on CTAF; when not received, procedure not authorized. DME/DME RNP-0.3 NA.
 No controlled airspace below 5500.

MISSED APPROACH: Climbing left turn to 2000 direct WAVKI WP and hold.

KOSRAE RADIO
123.6 (CTAF) **📻**



PAC, 31 OCT 2024 to 26 DEC 2024

PAC, 31 OCT 2024 to 26 DEC 2024

ELEV	12	TDZE	10
------	----	------	----

5752 x 150

MIRL Rwy 5-23 **📻**
 REIL Rwys 5 and 23 **📻**

4 NM Holding Pattern	OCAÑO	FOMAK	MENLE	2000 WAVKI
2000	← 238°	058° →	058°	3.00° TCH 50
	6 NM	3.1 NM	1.7	
CATEGORY	A	B	C	D
LNAV MDA	460-2 450 (500-2)			
CIRCLING	520-2 508 (600-2)			580-2 568 (600-2)