

APP CRS <b>138°</b>	Rwy Idg TDZE Apt Elev	<b>5000</b> <b>988</b> <b>989</b>
------------------------	-----------------------------	---

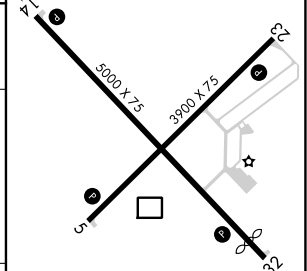
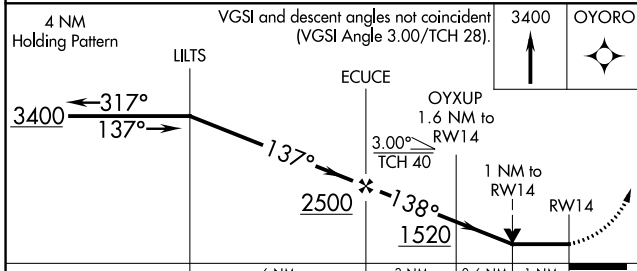
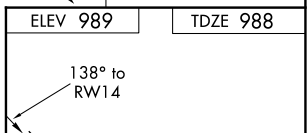
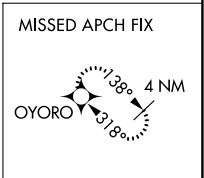
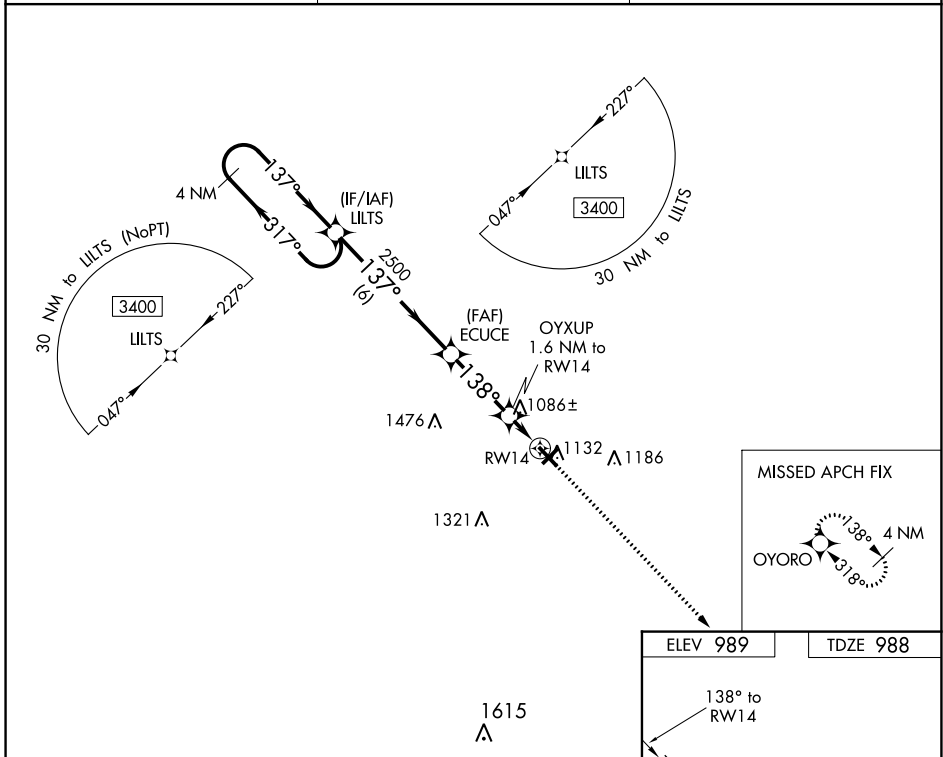
# RNAV (GPS) RWY 14

BURNETT COUNTY (RZN)

**▼** DME/DME RNP-0.3 NA. VDP NA with Rush City, MN altimeter setting.  
**▲** When local altimeter setting not received, use Rush City, MN altimeter setting and increase all MDA 80 feet; increase LNAV Cat C/D visibility and Circling Cat C/D visibility ¼ mile. Helicopter visibility reduction below ¾ SM NA. Night landing: Rwy 5, 23, 32 NA.

**MISSED APPROACH:**  
Climb to 3400 direct OYORO and hold.

AWOS-3 <b>118.325</b>	MINNEAPOLIS CENTER <b>121.05 235.775</b>	UNICOM <b>122.8</b> (CTAF) <b>📻</b>
--------------------------	---	--



CATEGORY	A	B	C	D
LNAV MDA	1340-1      352 (400-1)			
<b>C</b> CIRCLING	1440-1      451 (500-1)	1540-1½      551 (600-1½)		1680-2¼      691 (700-2¼)

REIL Rwys 5, 14, 23 and 32 **📻**  
 MRL Rwys 5-23 and 14-32 **📻**

EC-3, 28 NOV 2024 to 26 DEC 2024

EC-3, 28 NOV 2024 to 26 DEC 2024