

APP CRS	Rwy Idg	3900
226°	TDZE	989
	Apt Elev	989

RNAV (GPS) RWY 23

BURNETT COUNTY (RZN)

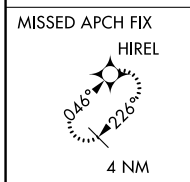
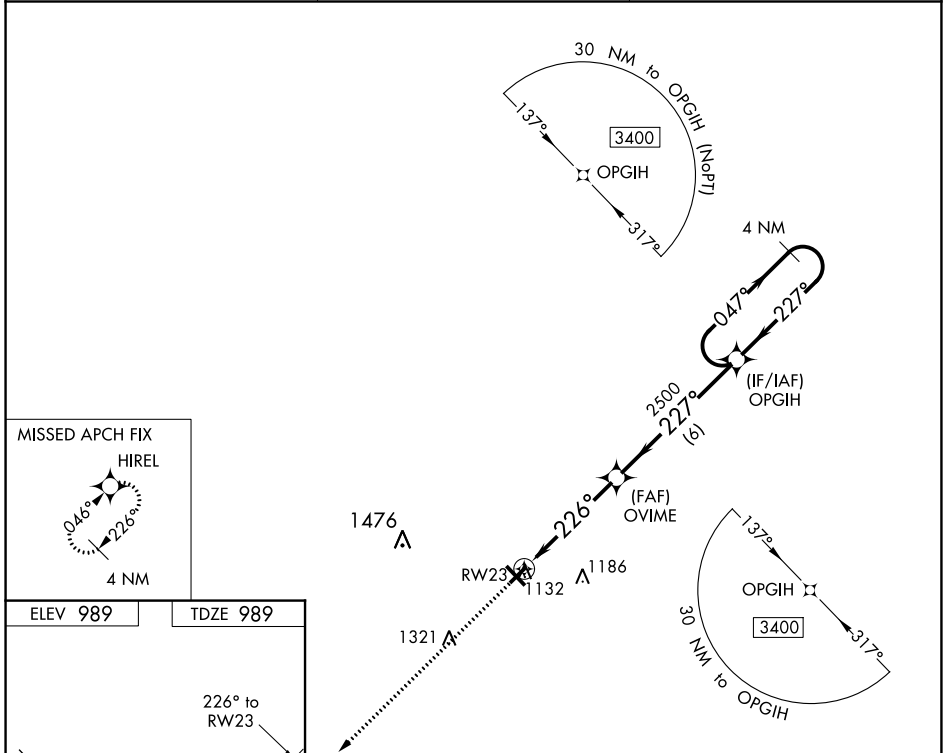
⚠ DME/DME RNP-0.3 NA. When local altimeter setting not received, use Rush City, MN altimeter setting and increase all MDA 80 feet; increase LNAV Cat C/D visibility 1/8 mile, and Circling Cat C/D visibility 1/4 mile. Helicopter visibility reduction below 1 SM NA. Night landing: Rwy 5, 23, 32, NA.

MISSED APPROACH: Climb to 3400 direct HIREL and hold.

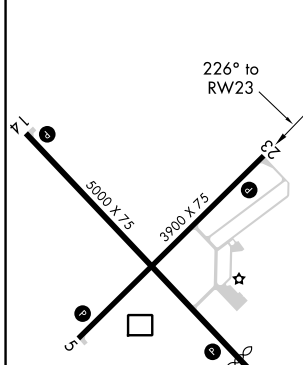
AWOS-3
118.325

MINNEAPOLIS CENTER
121.05 235.775

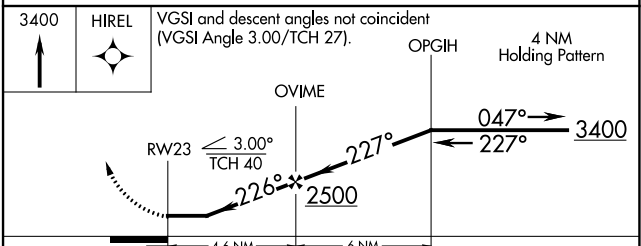
UNICOM
122.8 (CTAF) **0**



ELEV 989 TDZE 989



REIL Rws 5, 14, 23 and 32	0
MIRL Rws 5-23 and 14-32	0



CATEGORY	A	B	C	D
LNAV MDA	1440-1	451 (500-1)	1440-1 ³ / ₈	451 (500-1 ³ / ₈)
C CIRCLING	1440-1	451 (500-1)	1540-1 ¹ / ₂ 551 (600-1 ¹ / ₂)	1680-2 ¹ / ₄ 691 (700-2 ¹ / ₄)

EC-3, 28 NOV 2024 to 26 DEC 2024

EC-3, 28 NOV 2024 to 26 DEC 2024