

APP CRS	Rwy Idg	3900
046°	TDZE	989
	Apt Elev	989

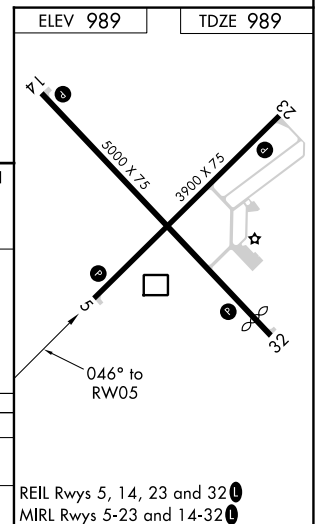
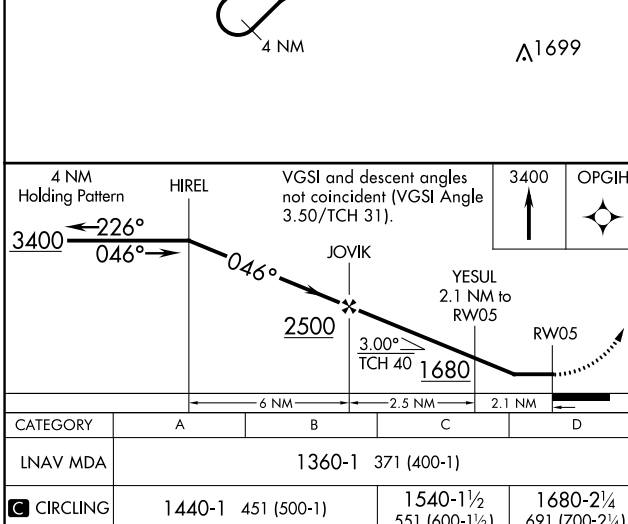
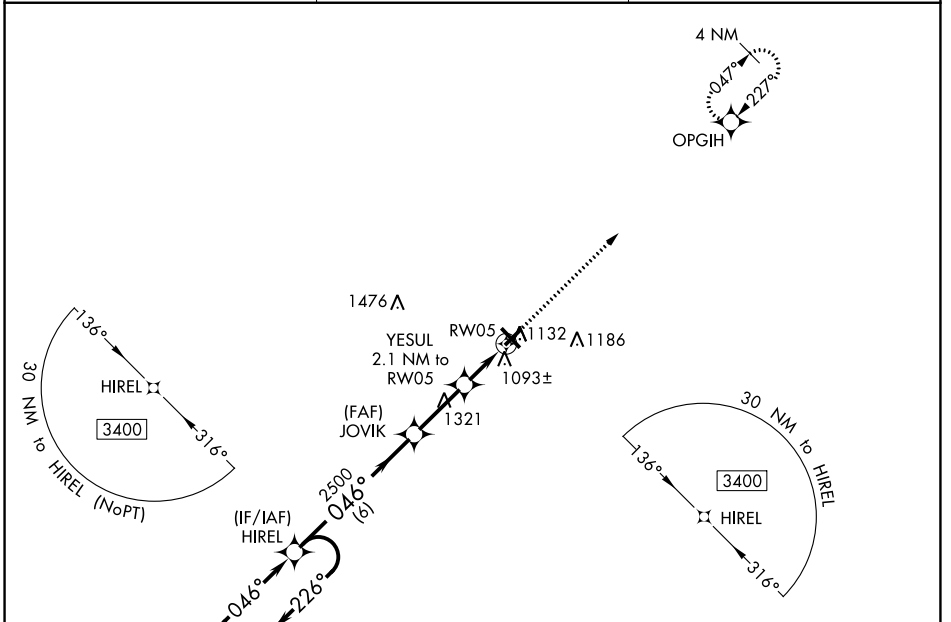
RNAV (GPS) RWY 5

BURNETT COUNTY (RZN)

⚠ DME/DME RNP-0.3 NA. Helicopter visibility reduction below 1 SM NA.
⚠ Night Landing: Rwy 5, 23, 32 NA. When local altimeter setting not received, use Rush City, MN altimeter setting and increase all MDA 80 feet; increase LNAV Cat C/D visibility 3/8 mile, and Circling Cat C/D visibility 1/4 mile.

MISSED APPROACH: Climb to 3400 direct OPGIH and hold.

AWOS-3 118.325	MINNEAPOLIS CENTER 121.05 235.775	UNICOM 122.8 (CTAF) 📶
--------------------------	---	--



CATEGORY	A	B	C	D	
LNAV MDA	1360-1 371 (400-1)				
📶 CIRCLING	1440-1	451 (500-1)	1540-1½ 551 (600-1½)	1680-2¼ 691 (700-2¼)	REIL Rwys 5, 14, 23 and 32 📶 MRL Rwys 5-23 and 14-32 📶

EC-3, 28 NOV 2024 to 26 DEC 2024

EC-3, 28 NOV 2024 to 26 DEC 2024