

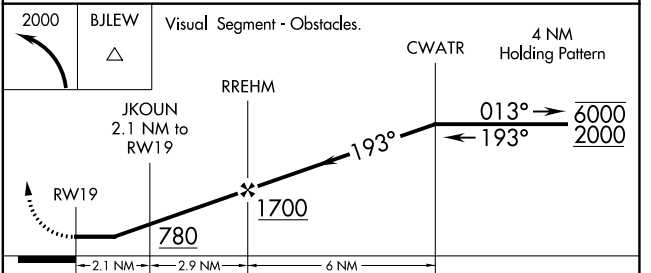
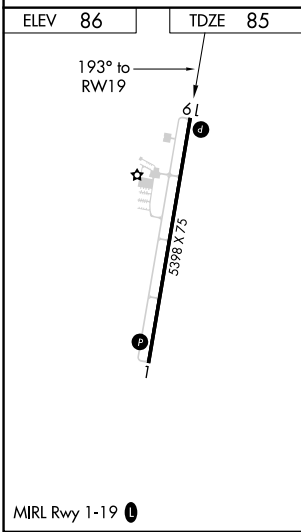
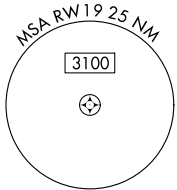
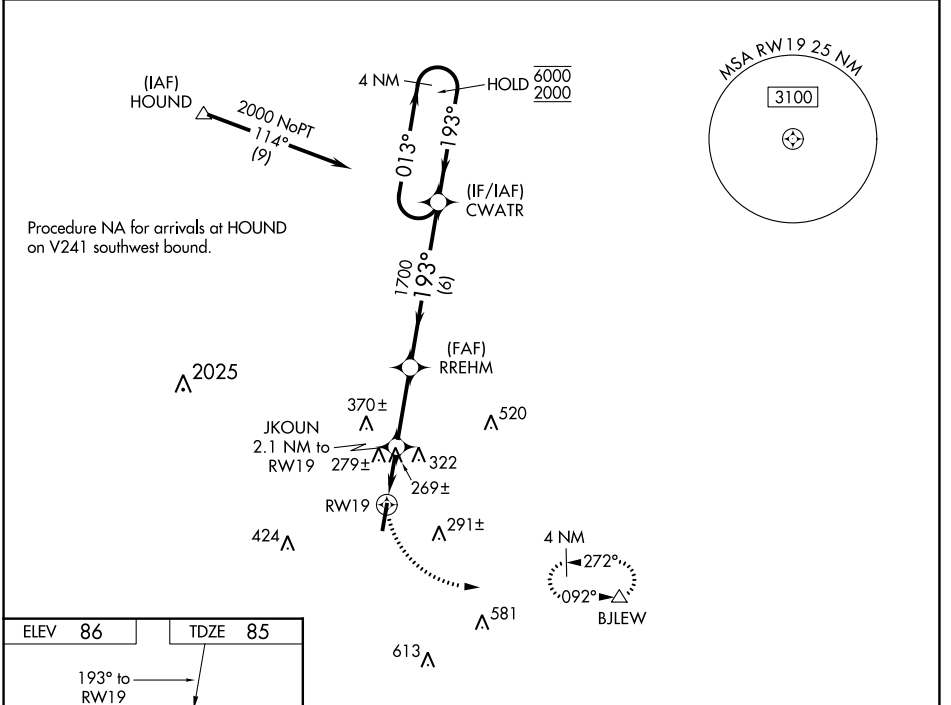
WAAS CH 69344	APP CRS 193°	Rwy Idg TDZE 85	5398
W19A		Apt Elev 86	

RNAV (GPS) RWY 19

TRI-COUNTY (B.C.R.)

RNP APCH - GPS.	MISSED APPROACH: Climbing left turn to 2000 direct BJLEW and hold.
<p>▼ Rwy 19 helicopter visibility reduction below 1 SM NA. When local altimeter setting not received, use Marianna altimeter setting and increase all MDAs 60 feet and visibility Cat C ¼ SM. Straight-in Rwy 19 NA at night, Circling Rwy 19 NA at night.</p>	

ASOS 119.825	CAIRNS APP CON ★ 133.75 270.35	UNICOM 122.725 (CTAF) 0
------------------------	--	-----------------------------------



CATEGORY	A	B	C	D
LP MDA	580-1	495 (500-1)	580-1 3/8 495 (500-1 3/8)	NA
LNAV MDA	600-1	515 (600-1)	600-1 3/8 515 (600-1 3/8)	NA
C CIRCLING	600-1	514 (600-1)	680-1 1/2 594 (600-1 1/2)	NA

SE-3, 28 NOV 2024 to 26 DEC 2024

SE-3, 28 NOV 2024 to 26 DEC 2024