

(KER4.KER) 24081
KERMIT FOUR DEPARTURE

LINCOLN-TON-LINCOLN COUNTY RGNL (IPJ)
 AL-6894 (FAA)
 LINCOLN-TON, NORTH CAROLINA

CHARLOTTE DEP CON
 134.75 257.2
 AWOS-3
 119.675
 CLNC DEL (GCO)
 124.9
 UNICOM
 123.05

RADAR and DME required.

**TOP ALTITUDE:
 3000**

TAKEOFF MINIMUMS
 Rwy's 5, 23: Standard.

PULASKI
 116.8 PSK
 Chan 115

BARRETT'S MOUNTAIN
 113.75 BZM
 Chan 84(Y)

SUGARLOAF MOUNTAIN
 112.2 SUG
 Chan 59

CHARLOTTE
 115.0 CLT
 Chan 97

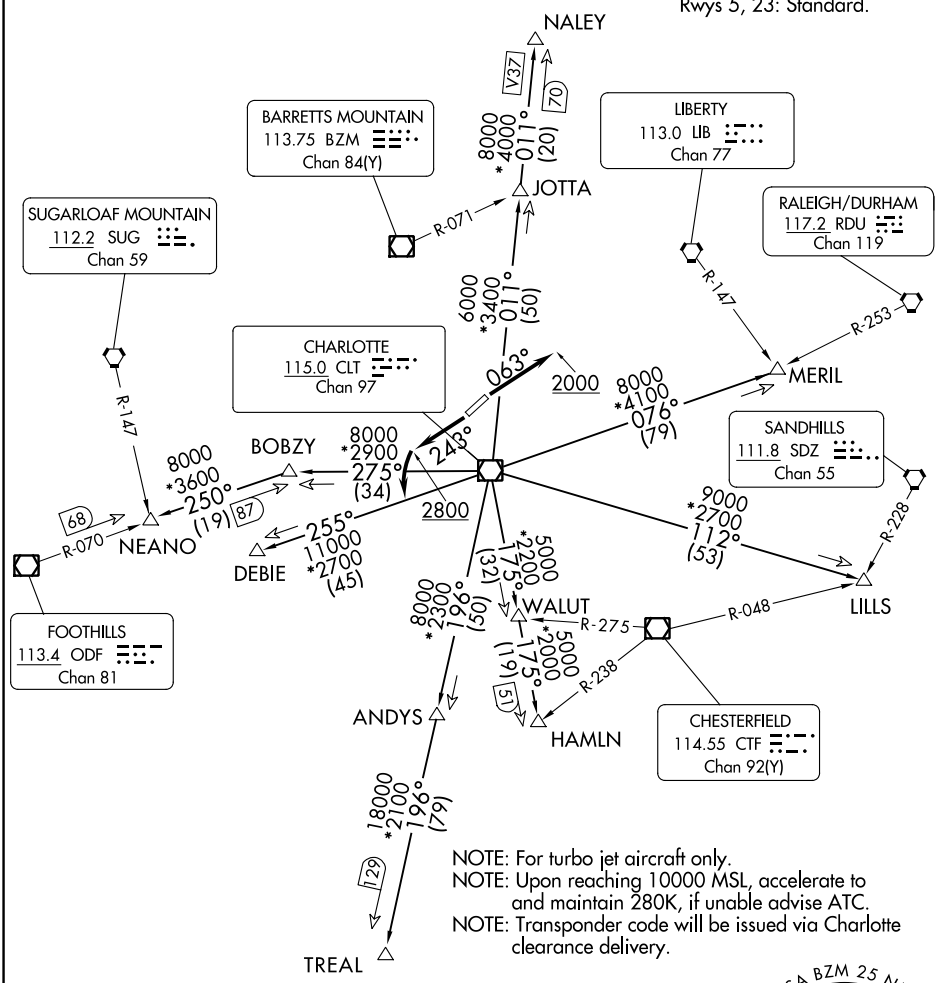
LIBERTY
 113.0 LIB
 Chan 77

RALEIGH/DURHAM
 117.2 RDU
 Chan 119

FOOTHILLS
 113.4 ODF
 Chan 81

SANDHILLS
 111.8 SDZ
 Chan 55

CHESTERFIELD
 114.55 CTF
 Chan 92(Y)



SE-2, 28 NOV 2024 to 26 DEC 2024

SE-2, 28 NOV 2024 to 26 DEC 2024

NOTE: Chart not to scale.

(CONTINUED ON FOLLOWING PAGE)

KERMIT FOUR DEPARTURE
 (KER4.KER) 21 MAR 24

LINCOLN-TON, NORTH CAROLINA
 LINCOLN-TON-LINCOLN COUNTY RGNL (IPJ)



DEPARTURE ROUTE DESCRIPTION

TAKEOFF RUNWAY 5: Climb on heading 063° to 2000 before proceeding on course.
thence

TAKEOFF RUNWAY 23: Climb on heading 243° to 2800 before turning left,
thence

. . . . on RADAR vectors to intercept filed/assigned transition or enroute fix/navaid.
Maintain 3000, expect filed altitude/flight level 10 minutes after departure.

ANDYS TRANSITION (KER4.ANDYS): From over CLT VOR/DME on CLT R-196 to ANDYS.

DEBIE TRANSITION (KER4.DEBIE): From over CLT VOR/DME on CLT R-255 to DEBIE.

HAMLN TRANSITION (KER4.HAMLN): From over CLT VOR/DME on CLT R-175 to HAMLN.

JOTTA TRANSITION (KER4.JOTTA): From over CLT VOR/DME on CLT R-011 to JOTTA.

LILLS TRANSITION (KER4.LILLS): From over CLT VOR/DME on CLT R-112 to LILLS.

MERIL TRANSITION (KER4.MERIL): From over CLT VOR/DME on CLT R-076 to MERIL.

NALEY TRANSITION (KER4.NALEY): From over CLT VOR/DME on CLT R-011 to NALEY.

NEANO TRANSITION (KER4.NEANO): From over CLT VOR/DME on CLT R-275 to BOBZY,
then on ODF R-070 to NEANO.

TREAL TRANSITION (KER4.TREAL): From over CLT VOR/DME on CLT R-196 to TREAL.

SE-2, 28 NOV 2024 to 26 DEC 2024

SE-2, 28 NOV 2024 to 26 DEC 2024