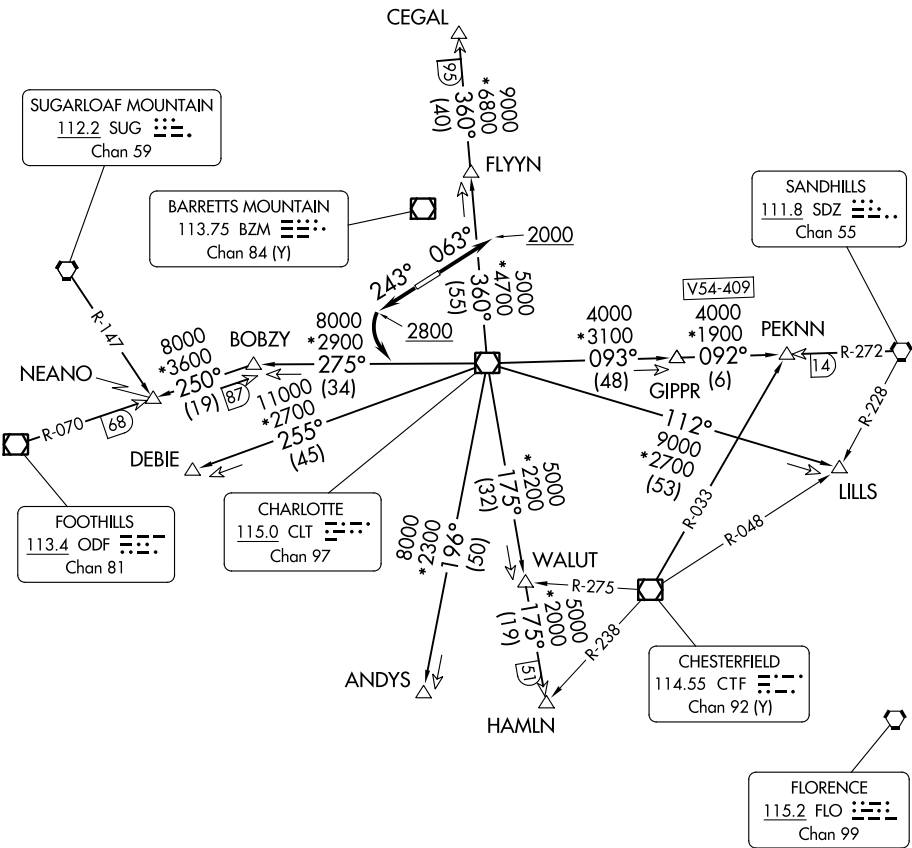


CHARLOTTE DEP CON  
 134.75 257.2  
 AWOS-3  
 119.675  
 CLNC DEL (GCO)  
 124.9  
 UNICOM (CTAF)  
 123.05

**TOP ALTITUDE:  
 3000**

RADAR and DME required.

TAKEOFF MINIMUMS  
 Rwy 5, 23: Standard.



SE-2, 28 NOV 2024 to 26 DEC 2024

SE-2, 28 NOV 2024 to 26 DEC 2024

- NOTE: For propeller aircraft only.
- NOTE: Turboprops: Operate in a manner that will result in best forward speed and climb rate.
- NOTE: Transponder code will be issued via Charlotte clearance delivery.

(CONTINUED ON FOLLOWING PAGE)

NOTE: Chart not to scale.



DEPARTURE ROUTE DESCRIPTION

TAKEOFF RUNWAY 5: Climb on heading 063° to 2000 before proceeding on course, thence. . . .

TAKEOFF RUNWAY 23: Climb on heading 243° to 2800 before turning left, thence. . . .

. . . .expect RADAR vectors to intercept filed/assigned transition or enroute fix/navaid. Maintain 3000, expect filed altitude/flight level 10 minutes after departure.

ANDYS TRANSITION (KNI3.ANDYS): From over CLT VOR/DME on CLT R-196 to ANDYS.

CEGAL TRANSITION (KNI3.CEGAL): From over CLT VOR/DME on CLT R-360 to CEGAL.

DEBIE TRANSITION (KNI3.DEBIE): From over CLT VOR/DME on CLT R-255 to DEBIE.

FLYYN TRANSITION (KNI3.FLYYN): From over CLT VOR/DME on CLT R-360 to FLYYN.

HAMLN TRANSITION (KNI3.HAMLN): From over CLT VOR/DME on CLT R-175 to HAMLN.

LILLS TRANSITION (KNI3.LILLS): From over CLT VOR/DME on CLT R-112 to LILLS.

NEANO TRANSITION (KNI3.NEANO): From over CLT VOR/DME on CLT R-275 to BOBZY, then on ODF R-070 to NEANO.

PEKNN TRANSITION (KNI3.PEKNN): From over CLT VOR/DME on CLT R-093 to GIPPR, then on SDZ R-272 to PEKNN.

SE-2, 28 NOV 2024 to 26 DEC 2024

SE-2, 28 NOV 2024 to 26 DEC 2024