

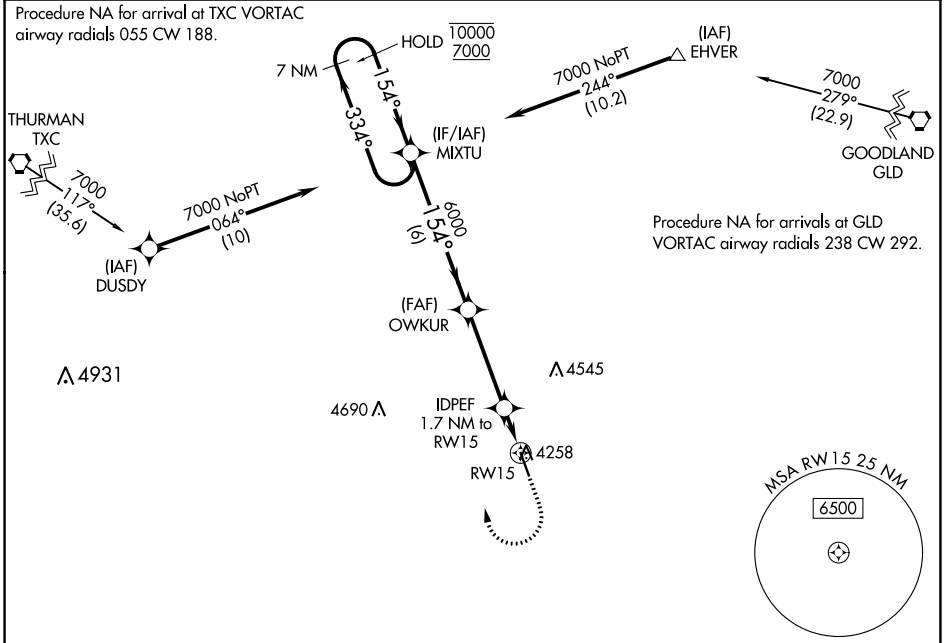
WAAS CH 72999 W 15A	APP CRS 154°	Rwy Idg 5199 TDZE 4218 Apt Elev 4218
---	------------------------	---

RNAV (GPS) RWY 15

KIT CARSON COUNTY (ITR)

RNP APCH - GPS.	MISSED APPROACH: Climb to 4700 then climbing right turn to 7000 direct MIXTU and hold.
<p>▼ For uncompensated Baro-VNAV systems, LNAV/VNAV NA below -23°C or above 54°C.</p>	

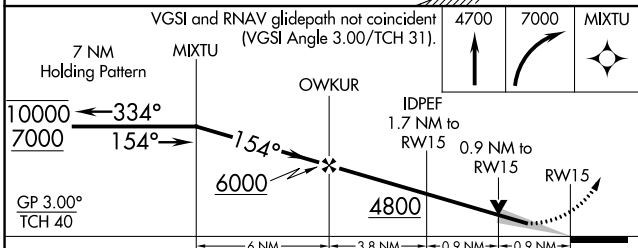
ASOS 135.225	DENVER CENTER 132.7 226.675	UNICOM 122.8 (CTAF) 0
------------------------	---------------------------------------	---------------------------------



SW-1, 28 NOV 2024 to 26 DEC 2024

SW-1, 28 NOV 2024 to 26 DEC 2024

ELEV 4218	TDZE 4218
-----------	-----------



CATEGORY	A	B	C	D
LPV DA		4468-1	250 (300-1)	
LNAV/VNAV DA		4468-1	250 (300-1)	
LNAV MDA		4520-1	302 (400-1)	
C CIRCLING	4580-1 362 (400-1)	4700-1 482 (500-1)	4860-1¾ 642 (700-1¾)	4860-2 642 (700-2)

