

WAAS CH 58318 W27A	APP CRS 272°	Rwy Idg TDZE 494 Apt Elev 494
--	------------------------	---

RNAV (GPS) RWY 27

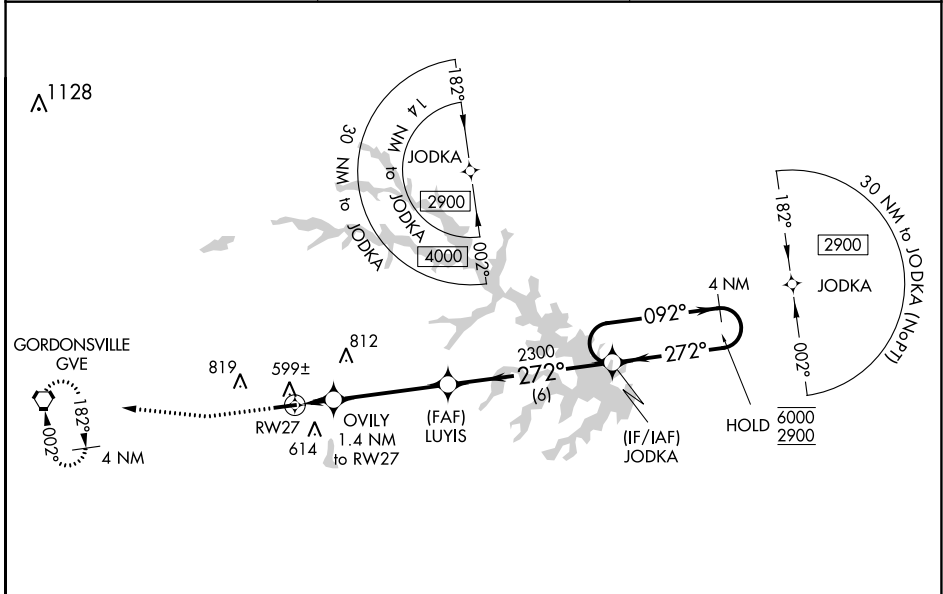
LOUISA COUNTY/FREEMAN FLD (LKU)

RNP APCH

⚠ Circling NA north of Rwy 9-27. Baro-VNAV NA when using Orange altimeter setting. For uncompensated Baro-VNAV systems, LNAV/VNAV NA below -15°C or above 54°C. When local altimeter setting not received, use Orange altimeter setting and increase all DA to 780 feet and all MDA 40 feet and increase LPV and LNAV/VNAV visibility $\frac{1}{8}$ SM.

MISSED APPROACH: Climb to 1000 then climbing right turn to 2900 direct GVE VORTAC and hold, continue climb-in-hold to 2900.

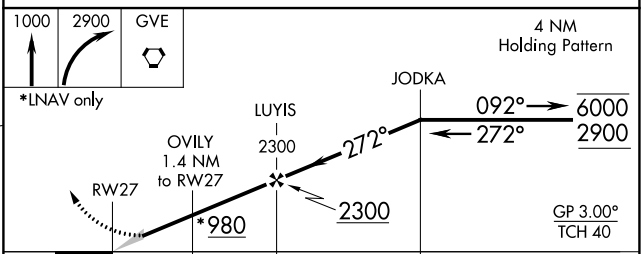
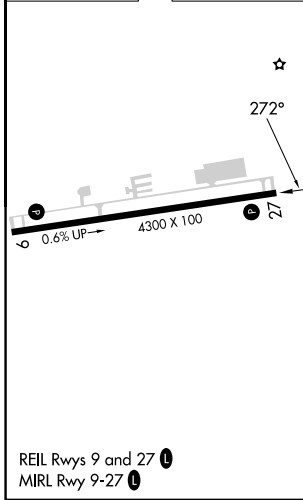
AWOS-3 119.475	POTOMAC APP CON 132.85 323.125	UNICOM 122.975 (CTAF) 0
--------------------------	--	-----------------------------------



NE-3, 28 NOV 2024 to 26 DEC 2024

NE-3, 28 NOV 2024 to 26 DEC 2024

ELEV 494	TDZE 494
-----------------	-----------------



CATEGORY	A	B	C	D
LPV DA	744- $\frac{3}{4}$	250 (300- $\frac{3}{4}$)		NA
LNAV/VNAV DA	744- $\frac{3}{4}$	250 (300- $\frac{3}{4}$)		NA
LNAV MDA	860-1	366 (400-1)		NA
CIRCLING	900-1	960-1		
	406 (500-1)	466 (500-1)		NA