

WAAS CH <b>82005</b> <b>W16A</b>	APP CRS <b>163°</b>	Rwy Idg TDZE Apt Elev	<b>5000</b> <b>1515</b> <b>1535</b>
--	------------------------	-----------------------------	---

# RNAV (GPS) RWY 16

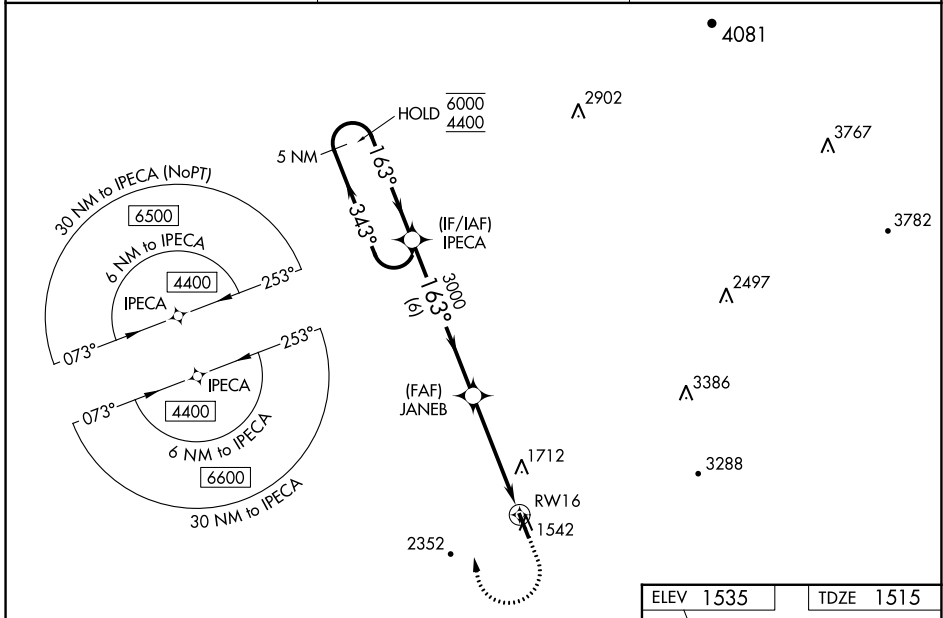
PICKENS COUNTY (JZP)

RNP APCH - GPS.

**▽**  
**▲** Rwy 16 helicopter visibility reduction below ¾ SM NA.  
For uncompensated Baro-VNAV systems, LNAV/VNAV NA below -18°C or above 54°C.

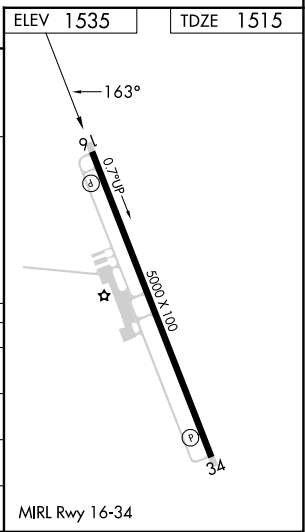
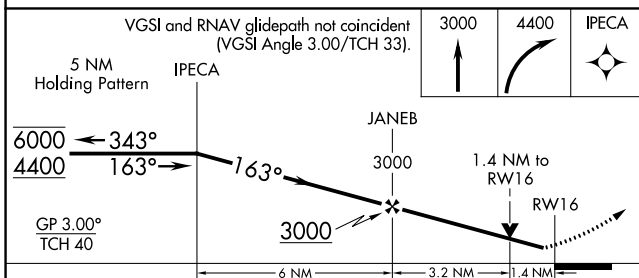
MISSED APPROACH: Climb to 3000 then climbing right turn to 4400 direct IPECA and hold.

AWOS-3PT <b>120.025</b>	ATLANTA CENTER <b>133.1 342.425</b>	UNICOM <b>122.725</b> (CTAF)
----------------------------	--	---------------------------------



SE-4, 28 NOV 2024 to 26 DEC 2024

SE-4, 28 NOV 2024 to 26 DEC 2024



CATEGORY	A	B	C	D
LPV DA		1915-1½	400 (400-1½)	
LNAV/VNAV DA		1980-1¾	465 (500-1¾)	
LNAV MDA	1980-1	465 (500-1)	1980-1¾	465 (500-1¾)
CIRCLING	1980-1 445 (500-1)	2360-1¼ 825 (900-1¼)	2760-3	1225 (1300-3)