

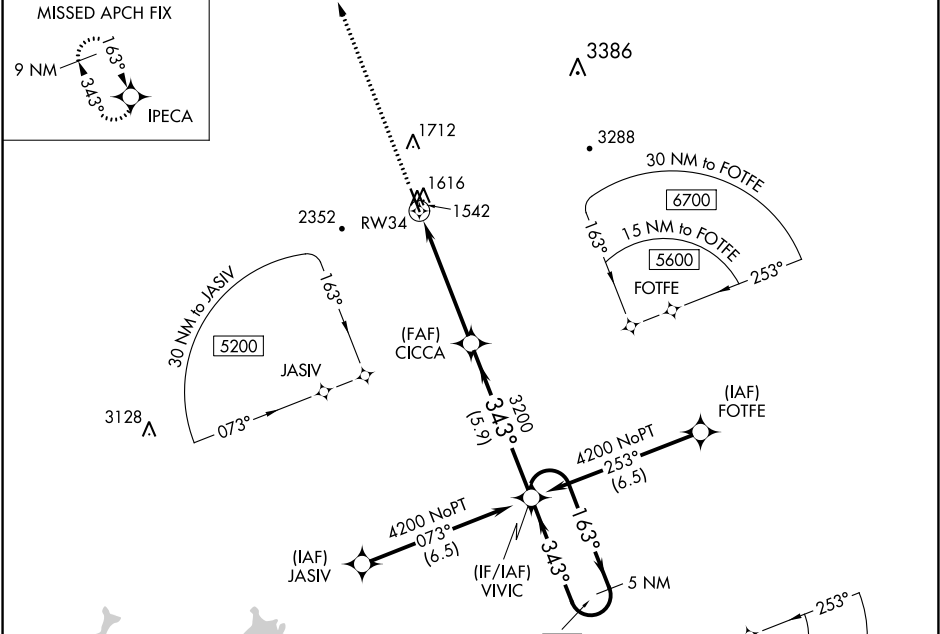
WAAS CH <b>77705</b> <b>W34A</b>	APP CRS <b>343°</b>	Rwy Idg TDZE <b>1535</b> Apt Elev <b>1535</b>
--	------------------------	---

# RNAV (GPS) RWY 34

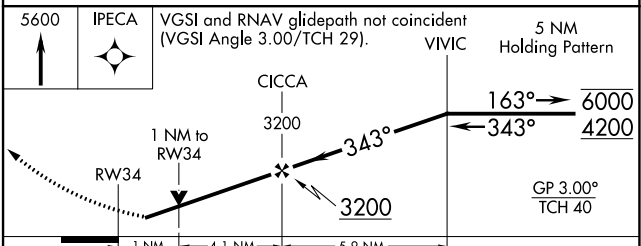
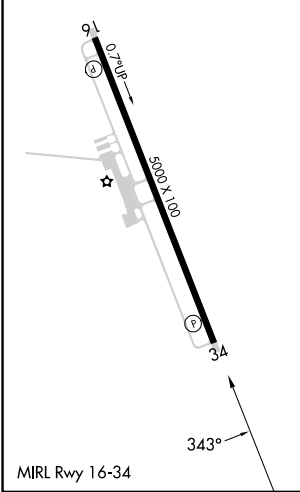
PICKENS COUNTY (JZP)

RNP APCH - GPS.		MISSED APPROACH: Climb to 5600 direct IPECA and hold, continue climb-in-hold to 5600.
Rwy 34 helicopter visibility reduction below $\frac{3}{4}$ SM NA.		

AWOS-3PT <b>120.025</b>	ATLANTA CENTER <b>133.1 342.425</b>	UNICOM <b>122.725</b> (CTAF)
----------------------------	--	---------------------------------



ELEV 1535	TDZE 1535
-----------	-----------



CATEGORY	A	B	C	D
LPV DA	1789- $\frac{3}{4}$	254 (300- $\frac{3}{4}$ )		NA
LNAV MDA	1880-1	345 (400-1)		NA
<input checked="" type="checkbox"/> CIRCLING	2040-1 505 (600-1)	2380-1 $\frac{1}{4}$ 845 (900-1 $\frac{1}{4}$ )	2800-3 1265 (1300-3)	NA

SE-4, 28 NOV 2024 to 26 DEC 2024

SE-4, 28 NOV 2024 to 26 DEC 2024