

APP CRS 175°	Rwy Idg TDZE Apt Elev	N/A N/A 2470
------------------------	-----------------------------	---

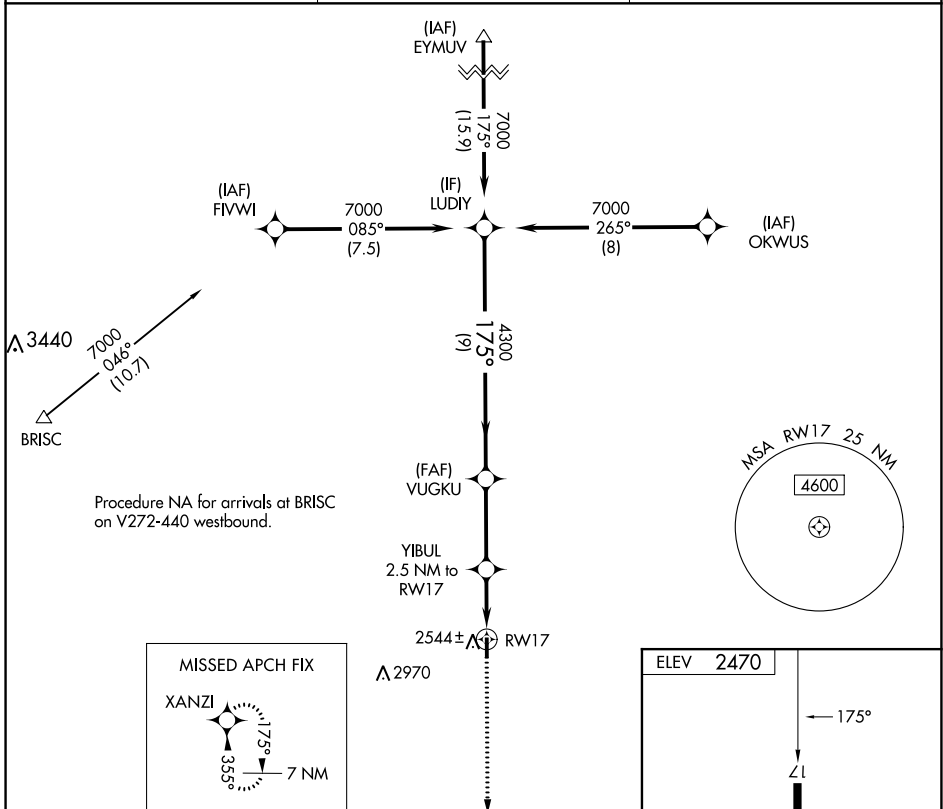
RNAV (GPS)-A

WHEELER MUNI (T59)

NA Helicopter visibility reduction below 3/4 SM NA. DME/DME RNP-0.3 NA. Use Hemphill County altimeter setting.

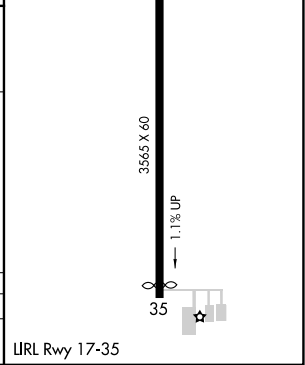
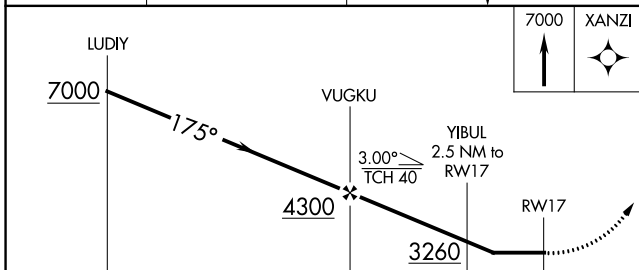
MISSED APPROACH: Climb to 7000 direct XANZI and hold, continue climb-in-hold to 7000.

HHF AWOS-3 119.025	ALBUQUERQUE CENTER 127.85 285.475	CTAF 122.9
------------------------------	---	----------------------



SC-2, 28 NOV 2024 to 26 DEC 2024

SC-2, 28 NOV 2024 to 26 DEC 2024



CATEGORY	A	B	C	D
CIRCLING	2980-1 510 (600-1)	3000-1 530 (600-1)	3020-1½ 550 (600-1½)	NA

URL Rwy 17-35