

# LALUZ SIX DEPARTURE (RNAV)

AL-6915 (FAA)

GLENDALE RGNL (GJTU)  
GLENDALE, ARIZONA

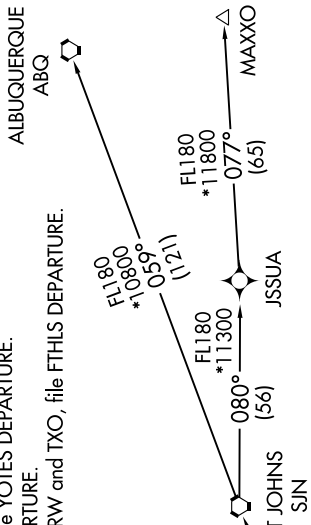
SW-4, 28 NOV 2024 to 26 DEC 2024

ATIS 119.425  
 GND CON 118.0  
 GLENDALE TOWER \* 121.0  
 LUKE DEP CON \* 118.15 363.125  
 PHOENIX DEP CON 120.7 239.0

NOTE: RNAV 1.  
 NOTE: Turbojets and turboprops only.  
 NOTE: RADAR required.  
 NOTE: GPS required.  
 NOTE: SJN TRANSITION for ABQ terminal arrivals only.  
 NOTE: MAXXO TRANSITION ATC assigned only.  
 NOTE: Aircraft filing over DEN, RSK, ALS, and points north of ALS, file YOTES DEPARTURE.  
 NOTE: Aircraft filing over ABQ, CIM, FTI, and GCK, file LALUZ DEPARTURE.  
 NOTE: Aircraft filing over ACH, IBL, ONM, CNX, PNH, MMB, TCC, IRW, and TXO, file FTHLS DEPARTURE.  
 NOTE: Aircraft departing KGEU and KGYR ATC assigned only.

TAKEOFF MINIMUMS  
 Rwy 1, 19: Standard.

## TOP ALTITUDE: ASSIGNED BY ATC



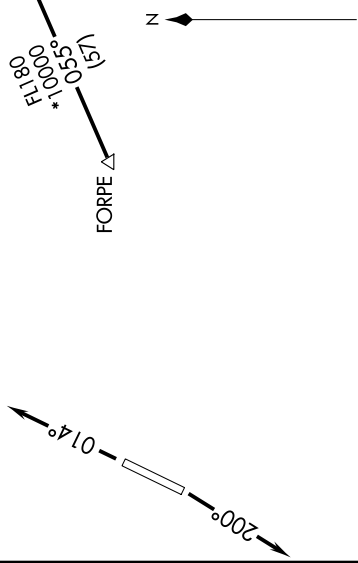
**DEPARTURE ROUTE DESCRIPTION**

▼ TAKEOFF RUNWAY 1: Climb heading 014° or as assigned by ATC, thence . . . .

TAKEOFF RUNWAY 19: Climb heading 200° or as assigned by ATC, thence . . . .

. . . . expect RADAR vectors to FORPE, then on track 055° to LALUZ, then on (transition). Maintain ATC assigned altitude, expect filed altitude 3 minutes after departure.

ALBUQUERQUE TRANSITION (LALUZ6.ABQ)  
 MAXXO TRANSITION (LALUZ6.MAXXO)  
 ST JOHNS TRANSITION (LALUZ6.SJN)



NOTE: Chart not to scale.

SW-4, 28 NOV 2024 to 26 DEC 2024