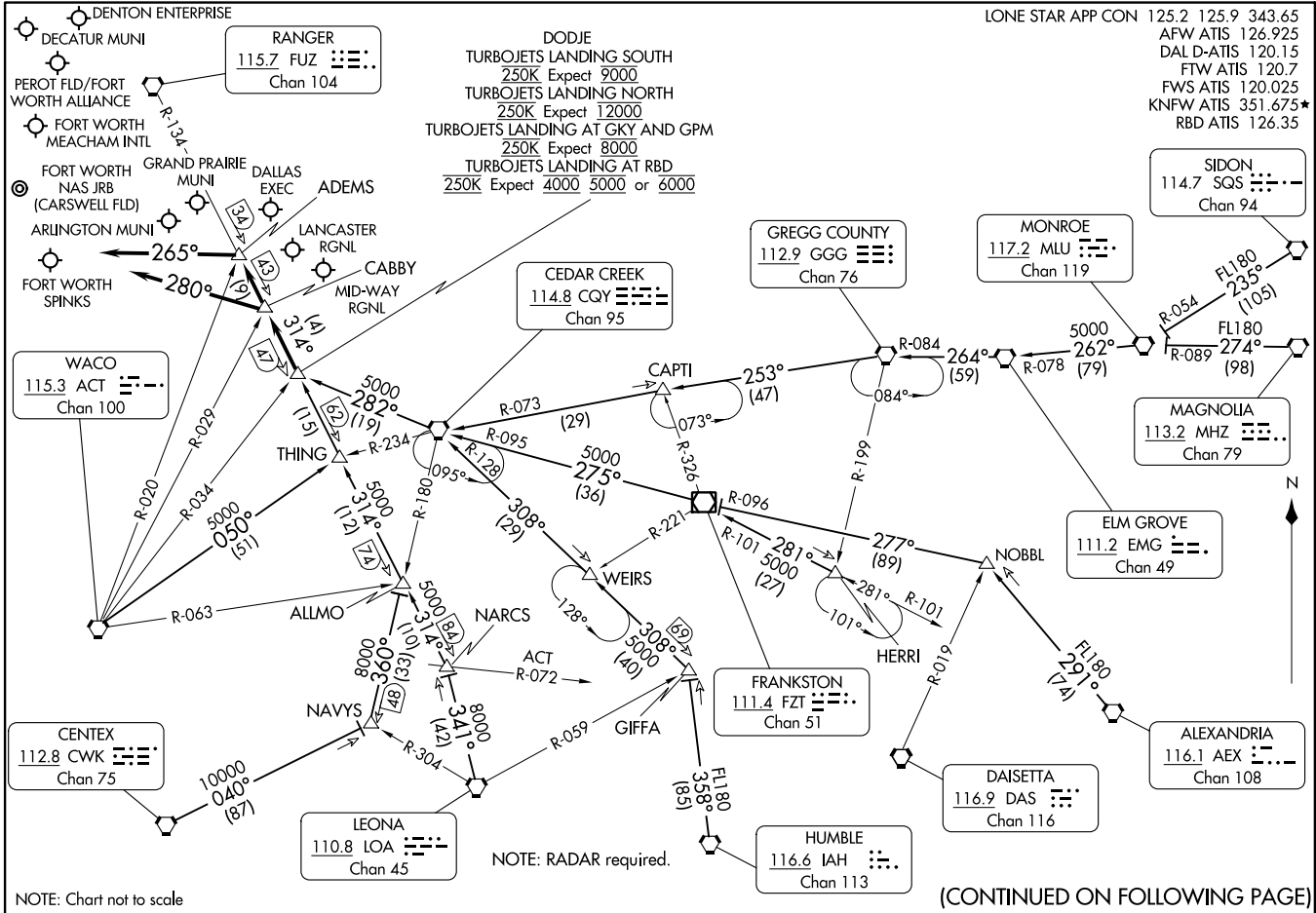


DODJIE SIX ARRIVAL
(DODJIE:DODJIE6) 21MAY20



LONE STAR APP CON 125.2 125.9 343.65
AFW ATIS 126.925
DAL D-ATIS 120.15
FTW ATIS 120.7
FWS ATIS 120.025
KNFW ATIS 351.675*
RBD ATIS 126.35

DODJIE
TURBOJETS LANDING SOUTH
250K Expect 9000
TURBOJETS LANDING NORTH
250K Expect 12000
TURBOJETS LANDING AT GKY AND GPM
250K Expect 8000
TURBOJETS LANDING AT RBD
250K Expect 4000 5000 or 6000

RANGER
115.7 FUZ
Chan 104

GREGG COUNTY
112.9 GGG
Chan 76

MONROE
117.2 MLU
Chan 119

SIDON
114.7 SGS
Chan 94

CEDAR CREEK
114.8 CGY
Chan 95

MAGNOLIA
113.2 MHZ
Chan 79

WACO
115.3 ACT
Chan 100

ELM GROVE
111.2 EMG
Chan 49

CENTEX
112.8 CWK
Chan 75

LEONA
110.8 LOA
Chan 45

HUMBLES
116.6 IAH
Chan 113

DAISETTA
116.9 DAS
Chan 116

ALEXANDRIA
116.1 AEX
Chan 108

DALLAS-FORT WORTH, TEXAS

(DODJIE:DODJIE6) 24305
DODJIE SIX ARRIVAL

AL-6918 (FAA)

DALLAS-FORT WORTH, TEXAS

(CONTINUED ON FOLLOWING PAGE)

ARRIVAL ROUTE DESCRIPTION

ALEXANDRIA TRANSITION (AEX.DODJE6): From over AEX VORTAC on AEX R-291 to NOBBL, then on FZT R-096 to FZT VOR/DME, then on FZT R-275 and CQY R-095 to CQY VORTAC, then on CQY R-282 to DODJE. Thence

CEDAR CREEK TRANSITION (CGY.DODJE6): From over CQY VORTAC on CQY R-282 to DODJE. Thence. . . .

CENTEX TRANSITION (CWK.DODJE6): From over CWK VORTAC on CWK R-040 to NAVYS, then on CQY R-180 to ALLMO, then on FUZ R-134 to DODJE. Thence

ELM GROVE TRANSITION (EMG.DODJE6): From over EMG VORTAC on EMG R-264 and GGG R-084 to GGG VORTAC, then on GGG R-253 and CQY R-073 to CAPTI, then on CQY R-073 to CQY VORTAC, then on CQY R-282 to DODJE. Thence

GREGG COUNTY TRANSITION (GGG.DODJE6): From over GGG VORTAC on GGG R-253 and CQY R-073 to CAPTI, then on CQY R-073 to CQY VORTAC, then on CQY R-282 to DODJE. Thence

HERRI TRANSITION (HERRI.DODJE6): From over HERRI on FZT R-101 to FZT VOR/DME, then on FZT R-275 and CQY R-095 to CQY VORTAC, then on CQY R-282 to DODJE. Thence

HUMBLE TRANSITION (IAH.DODJE6): From over IAH VORTAC on IAH R-358 to GIFFA, then on CQY R-128 to CQY VORTAC, then on CQY R-282 to DODJE. Thence

LEONA TRANSITION (LOA.DODJE6): From over LOA VORTAC on LOA R-341 to NARCS, then on FUZ R-134 to DODJE. Thence

MAGNOLIA TRANSITION (MHZ.DODJE6): From over MHZ VORTAC on MHZ R-274 and MLU R-089 to MLU VORTAC, then on MLU R-262 and EMG R-078 to EMG VORTAC, then on EMG R-264 and GGG R-084 to GGG VORTAC, then on GGG R-253 and CQY R-073 to CAPTI, then on CQY R-073 to CQY VORTAC, then on CQY R-282 to DODJE. Thence

MONROE TRANSITION (MLU.DODJE6): From over MLU VORTAC on MLU R-262 and EMG R-078 to EMG VORTAC, then on EMG R-264 and GGG R-084 to GGG VORTAC, then on GGG R-253 and CQY R-073 to CAPTI, then on CQY R-073 to CQY VORTAC, then on CQY R-282 to DODJE. Thence

NAVYS TRANSITION (NAVYS.DODJE6): From over NAVYS on CQY R-180 to ALLMO, then on FUZ R-134 to DODJE. Thence

SIDON TRANSITION (SQS.DODJE6): From over SQS VORTAC on SQS R-235 and MLU R-054 to MLU VORTAC, then on MLU R-262 and EMG R-078 to EMG VORTAC, then on EMG R-264 and GGG R-084 to GGG VORTAC, then on GGG R-253 and CQY R-073 to CAPTI, then on CQY R-073 to CQY VORTAC, then on CQY R-282 to DODJE. Thence

WACO TRANSITION (ACT.DODJE6): From over ACT VORTAC on ACT R-050 and CQY R-234 to THING, then on FUZ R-134 to DODJE. Thence

. . . . from over DODJE on FUZ R-134 to CABBYY or ADEMS (when directed by ATC).
Depart CABBYY heading 280°. Expect RADAR vectors to final approach course.
Depart ADEMS heading 265°. Expect RADAR vectors to final approach course.