

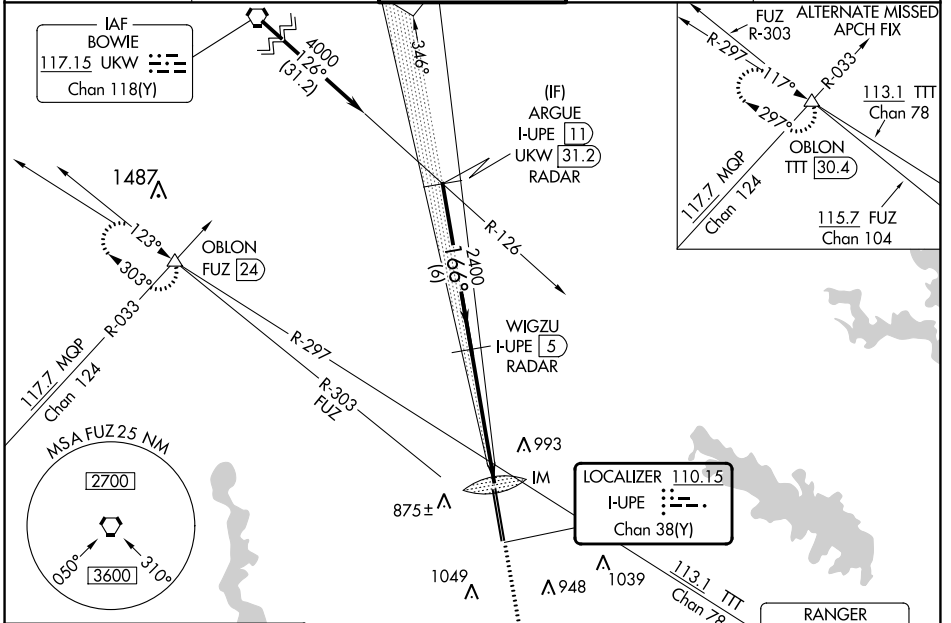
LOC/DME I-UPE <b>110.15</b> Chan <b>38</b> (Y)	APP CRS <b>166°</b>	Rwy Idg 16L 16R	10600 10410
		TDZE <b>723</b>	<b>721</b>
		Apt Elev <b>723</b>	<b>723</b>

# ILS or LOC RWY 16L

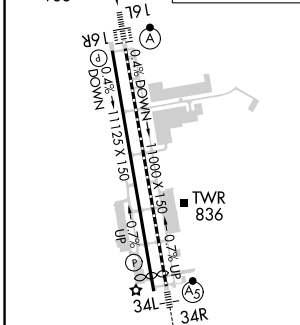
PEROT FLD/FORT WORTH ALLIANCE (A F W)

DME or RADAR required.	ALSF-2	MISSED APPROACH: Climb to 1200 then climbing right turn to 3000 on heading 330° and FUZ VORTAC R-303 to OBLON INT/FUZ 24 DME and hold.
<p>⚠ Circling NA east of Rwy 16L-34R. For inop ALS, increase S-ILS 16L Cat E visibility to RVR 4000 and S-LOC 16L Cat C/D/E visibility to RVR 6000.</p>		

ATIS <b>126.925</b>	LONE STAR APP CON <b>118.1 306.95</b>	ALLIANCE TOWER <b>135.15 257.9</b>	GND CON <b>132.65 306.2</b>	CLNC DEL <b>128.725</b>
------------------------	--	---------------------------------------	--------------------------------	----------------------------



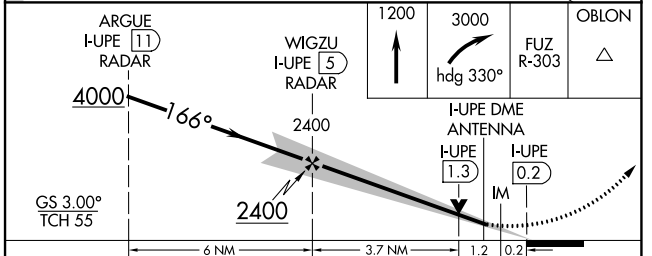
ELEV 723	<b>D</b> TDZE 16L 723
	TDZE 16R 721



TDZ/CL Rws 16L and 34R  
HIRL Rws 16L-34R and 16R-34L  
REIL Rws 16R and 34L

FAF to MAP 5.1 NM

Knots	60	90	120	150	180
Min:Sec	5:06	3:24	2:33	2:02	1:42



CATEGORY	A	B	C	D	E
S-ILS 16L	923/18 200 (200-½)				
S-LOC 16L	1220/24	497 (500-½)	1220/50	497 (500-1)	
SIDESTEP 16R	1240-1	519 (600-1)	1240-1½ 519 (600-1½)	1240-2	519 (600-2)
CIRCLING	1240-1 517 (600-1)	1320-1 597 (600-1)	1360-1¾ 637 (700-1¾)	1360-2 637 (700-2)	1380-2¼ 657 (700-2¼)

# ILS or LOC RWY 16L

SC-2, 28 NOV 2024 to 26 DEC 2024

SC-2, 28 NOV 2024 to 26 DEC 2024