

LOC/DME I-JVX <b>110.15</b> Chan <b>38</b> (Y)	APP CRS <b>346°</b>	Rwy Idg 34R <b>11000</b> 34L <b>10309</b> TDZE <b>681</b> <b>686</b> Apt Elev <b>723</b> <b>723</b>
--	------------------------	--

# ILS or LOC RWY 34R

PEROT FLD/FORT WORTH ALLIANCE (A/FW)

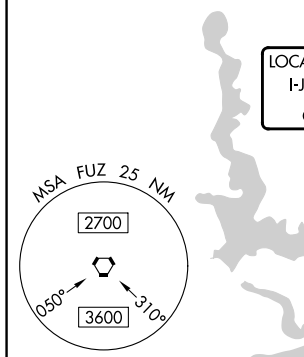
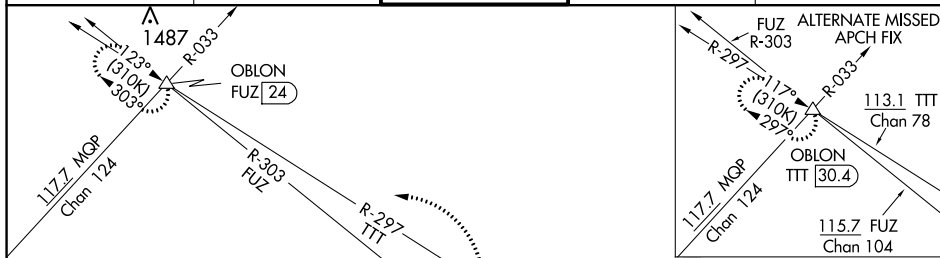
RADAR required for procedure entry.

▼ Circling NA east of Rwy 16L-34R. For inop ALS, increase S-ILS 34R Cat E visibility to RVR 4000 and S-LOC 34R Cat C/D/E visibility to 1 $\frac{3}{8}$  SM.



MISSED APPROACH: Climb to 1200 then climbing left turn to 3000 on heading 270° and FUZ VORTAC R-303 to OBLON INT/FUZ 24 DME and hold.

ATIS <b>126.925</b>	LONE STAR APP CON <b>118.1 306.95</b>	ALLIANCE TOWER <b>135.15 257.9</b>	GND CON <b>132.65 306.2</b>	CLNC DEL <b>128.725</b>
------------------------	--	---------------------------------------	--------------------------------	----------------------------

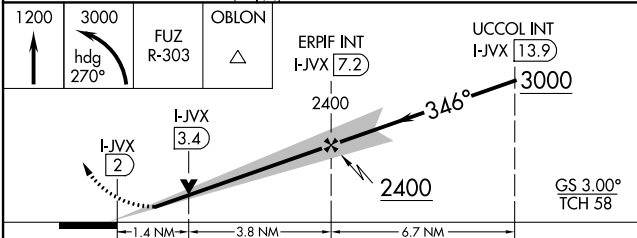
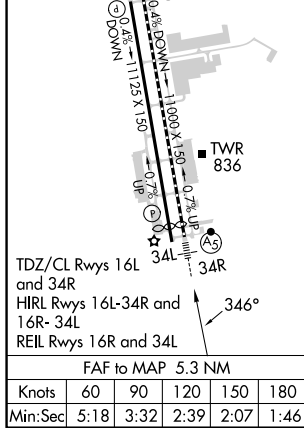


LOCALIZER 110.15  
I-JVX  
Chan 38(Y)

RANGER  
115.7 FUZ  
Chan 104

MAVERICK  
113.1 TTT  
Chan 78

ELEV 723	TDZE 34R 681
	TDZE 34L 686



CATEGORY	A	B	C	D	E
S-ILS 34R	881/18 200 (200-1/2)				
S-LOC 34R	1180/24	499 (500-1/2)	1180/50 499 (500-1)		
SIDESTEP 34L	1220-1	534 (600-1)	1220-1 $\frac{1}{2}$ 534 (600-1 $\frac{1}{2}$ )	1220-2	534 (600-2)
CIRCLING	1220-1 497 (500-1)	1320-1 597 (600-1)	1360-1 $\frac{3}{4}$ 637 (700-1 $\frac{3}{4}$ )	1360-2 637 (700-2)	1380-2 $\frac{1}{4}$ 657 (700-2 $\frac{1}{4}$ )

SC-2, 28 NOV 2024 to 26 DEC 2024

SC-2, 28 NOV 2024 to 26 DEC 2024