

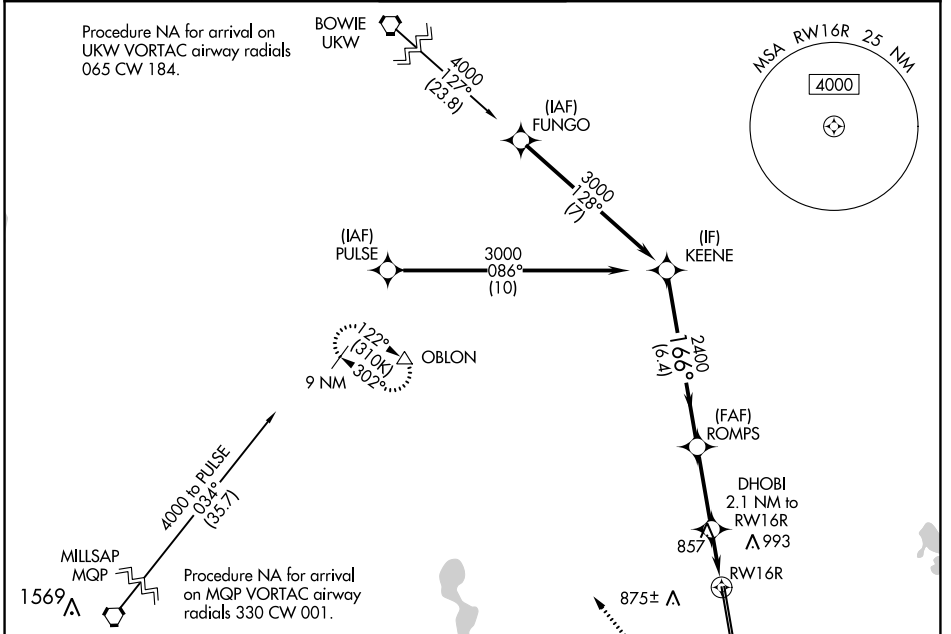
WAAS CH <b>99338</b> <b>W16A</b>	APP CRS <b>166°</b>	Rwy Idg <b>10410</b> TDZE <b>721</b> Apt Elev <b>723</b>
--	------------------------	--

# RNAV (GPS) RWY 16R

PEROT FLD/FORT WORTH ALLIANCE (AFW)

<b>⚠</b> For uncompensated Baro-VNAV systems, LNAV/VNAV NA below -9°C (16°F) or above 54°C (130°F). Circling NA east of Rwy 16L-34R. DME/DME RNP-0.3 NA.	MISSED APPROACH: Climb to 1200 then climbing right turn to 3000 direct OBLON and hold.
--	--

ATIS <b>126.925</b>	LONE STAR APP CON <b>118.1 306.95</b>	ALLIANCE TOWER <b>135.15 257.9</b>	GND CON <b>132.65 306.2</b>	CLNC DEL <b>128.725</b>
------------------------	--	---------------------------------------	--------------------------------	----------------------------



SC-2, 28 NOV 2024 to 26 DEC 2024

SC-2, 28 NOV 2024 to 26 DEC 2024

ELEV 723	<b>D</b>	TDZE 721
----------	----------	----------

