

| | | |
|-------------|----------|-------------|
| APP CRS | Rwy Idg | 3900 |
| 339° | TDZE | 2160 |
| | Apt Elev | 2160 |

RNAV (GPS) RWY 34

PIONEER VILLAGE FLD (ØV3)

RNP APCH - GPS.

▽ Rwy 34 helicopter visibility reduction below 1 SM NA. Use EAR altimeter setting; when not received, use HDE altimeter setting and increase all MDAs 40 feet. Procedure NA at night.

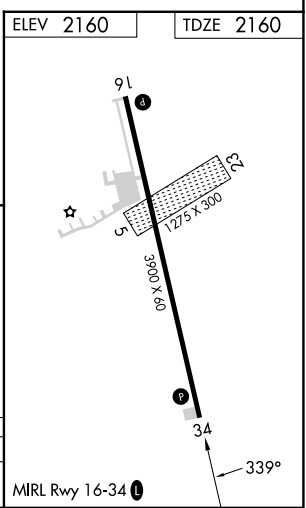
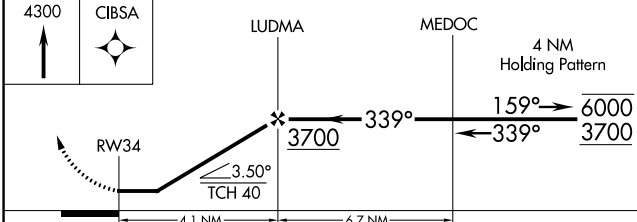
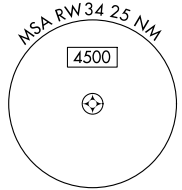
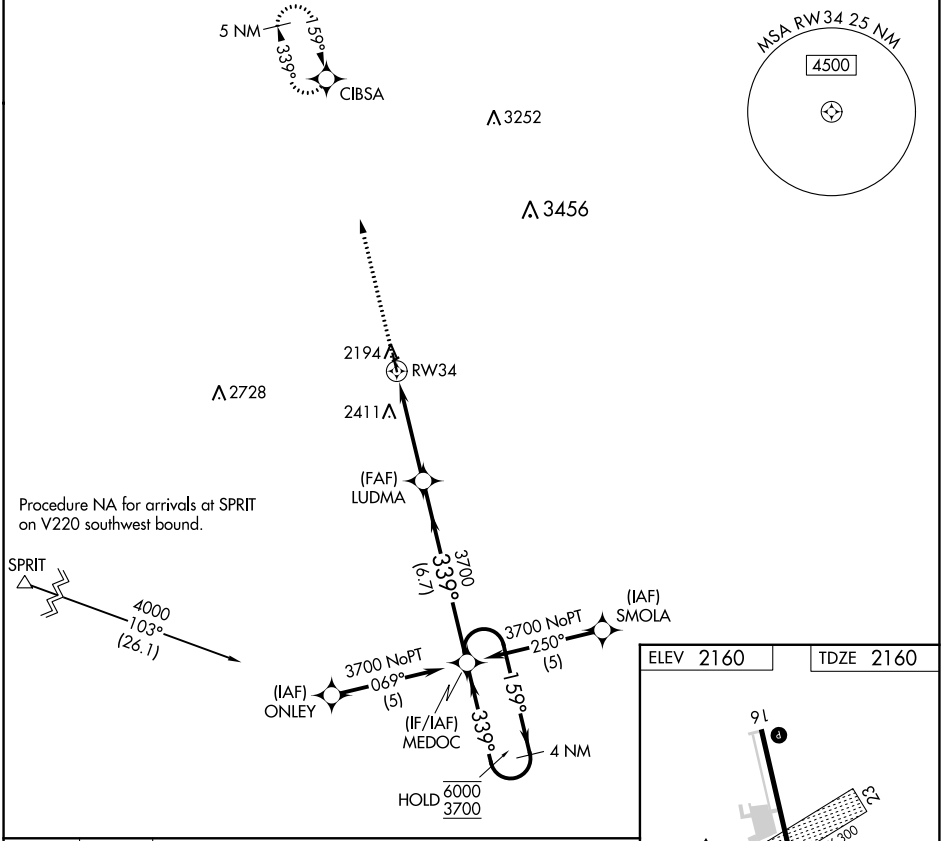
▲ NA

MISSED APPROACH: Climb to 4300 direct CIBSA and hold.

EAR AWOS-3PT
123.875

MINNEAPOLIS CENTER
119.4 278.8

UNICOM
122.7 (CTAF) 0



| | | | | |
|----------|--------|-------------|---|----|
| CATEGORY | A | B | C | D |
| LNAV MDA | 2700-1 | 540 (600-1) | | NA |

NC-2, 28 NOV 2024 to 26 DEC 2024

NC-2, 28 NOV 2024 to 26 DEC 2024