

LOC/DME I-SRR 110.7 Chan 44	APP CRS 241°	Rwy Idg 8120 TDZE 6771 Apt Elev 6814
--	------------------------	---

ILS or LOC RWY 24

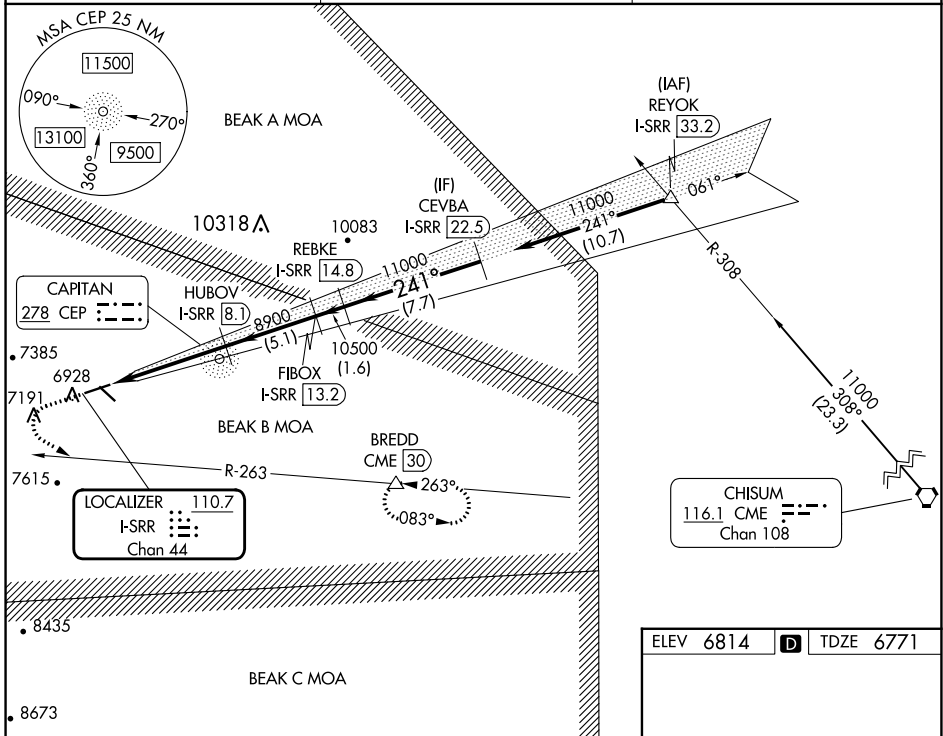
SIERRA BLANCA RGNL (SR.R)

DME required.

Autopilot coupled approach NA below 7200. Circling Rwy 12 NA at night. When local altimeter setting not received, procedure NA.

MISSED APPROACH: Climb to 7500 then climbing left turn to 11000 on heading 110° and on COME VORTAC R-263 to BREDD/CME 30 DME and hold, continue climb-in-hold to 11000.

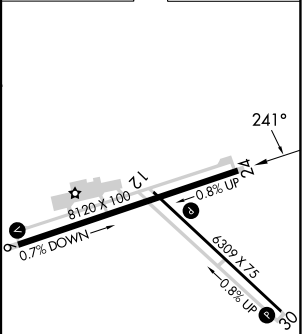
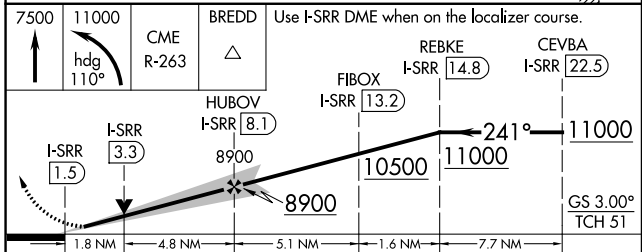
AWOS-3 126.475	ALBUQUERQUE CENTER 132.65 257.6	UNICOM 122.8 (CTAF)
--------------------------	---	-------------------------------



SW-1, 28 NOV 2024 to 26 DEC 2024

SW-1, 28 NOV 2024 to 26 DEC 2024

ELEV 6814	TDZE 6771
-----------	-----------



CATEGORY	A	B	C	D
S-ILS 24	6974-3/4 203 (200-3/4)			
S-LOC 24	7340-1	569 (600-1)	7340-1 5/8	569 (600-1 5/8)
CIRCLING	7340-1	526 (600-1)	7600-2 1/4	7860-3
			786 (800-2 1/4)	1046 (1100-3)

REIL Rwy 12 and 30	
MIRL Rwy 6-24 and 12-30	
FAF to MAP 6.6 NM	
Knots	60 90 120 150 180
Min:Sec	6:36 4:24 3:18 2:38 2:12