

WAAS CH 53420 W24A	APP CRS 241°	Rwy ldg TDZE Apt Elev	8120 6771 6814
--	------------------------	-----------------------------	---

RNAV (GPS) RWY 24

SIERRA BLANCA RGNL (S.R.R.)

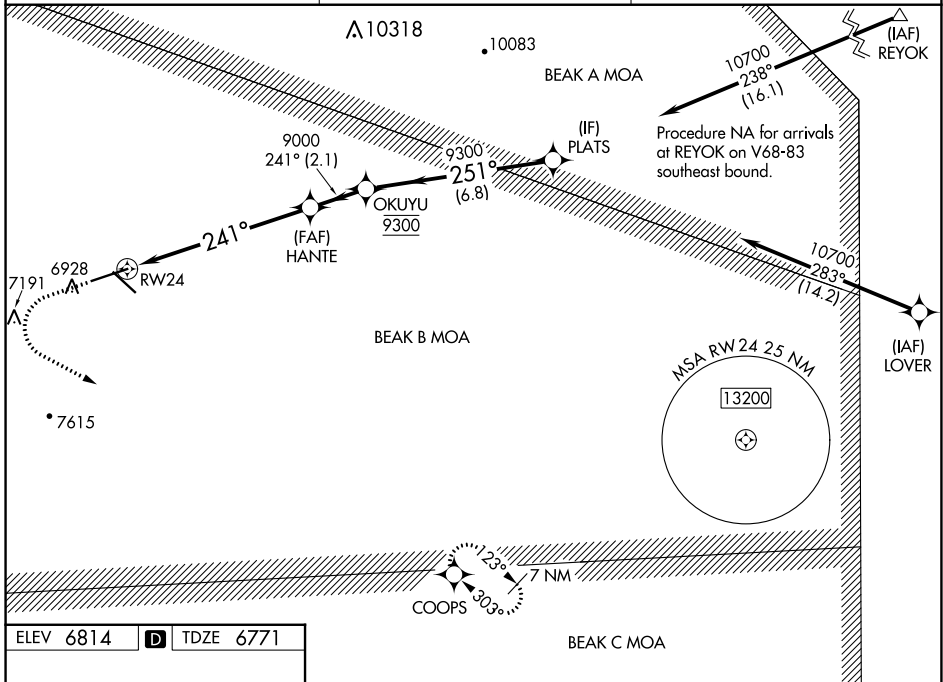
RNP APCH - GPS.

When local altimeter setting not received, procedure NA.

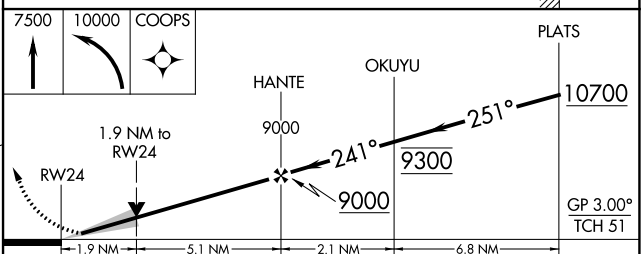
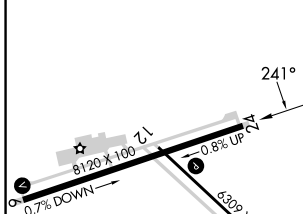
For uncompensated Baro-VNAV systems, LNAV/VNAV NA below -28°C or above 54°C. Circling Rwy 12 NA at night.

MISSED APPROACH: Climb to 7500 then climbing left turn to 10000 direct COOPS and hold.

AWOS-3 126.475	ALBUQUERQUE CENTER 132.65 257.6	UNICOM 122.8 (CTAF)
--------------------------	---	-------------------------------



ELEV 6814	D	TDZE 6771
-----------	---	-----------



CATEGORY	A	B	C	D
LPV DA	6971-3/4		200 (200-3/4)	
LNAV/VNAV DA	7220-1 3/8		449 (500-1 3/8)	
LNAV MDA	7380-1	609 (600-1)	7380-1 3/4	609 (600-1 3/4)
CIRCLING	7380-1	566 (600-1)	7600-2 1/4 786 (800-2 1/4)	7860-3 1046 (1100-3)

SW-1, 28 NOV 2024 to 26 DEC 2024

SW-1, 28 NOV 2024 to 26 DEC 2024