

APP CRS	Rwy Idg	3707
354°	TDZE	1560
	Apt Elev	1561

RNAV (GPS) RWY 35

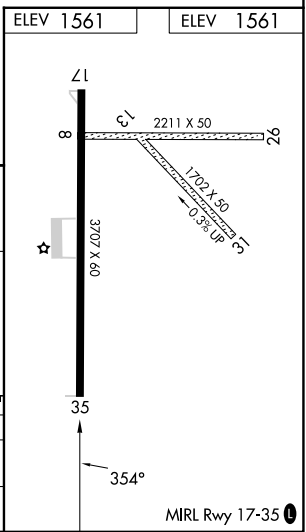
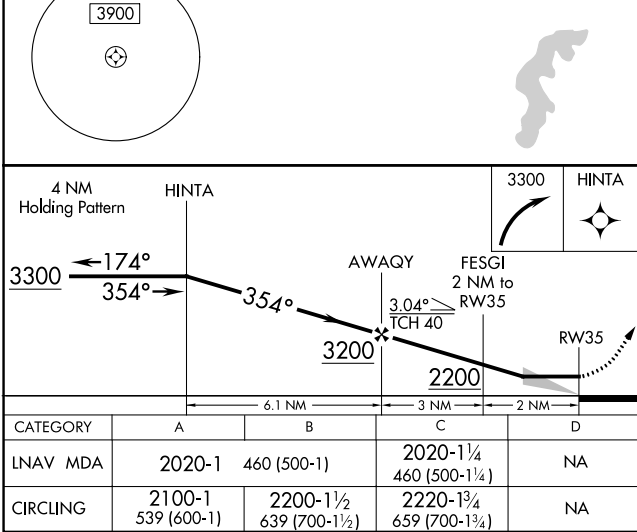
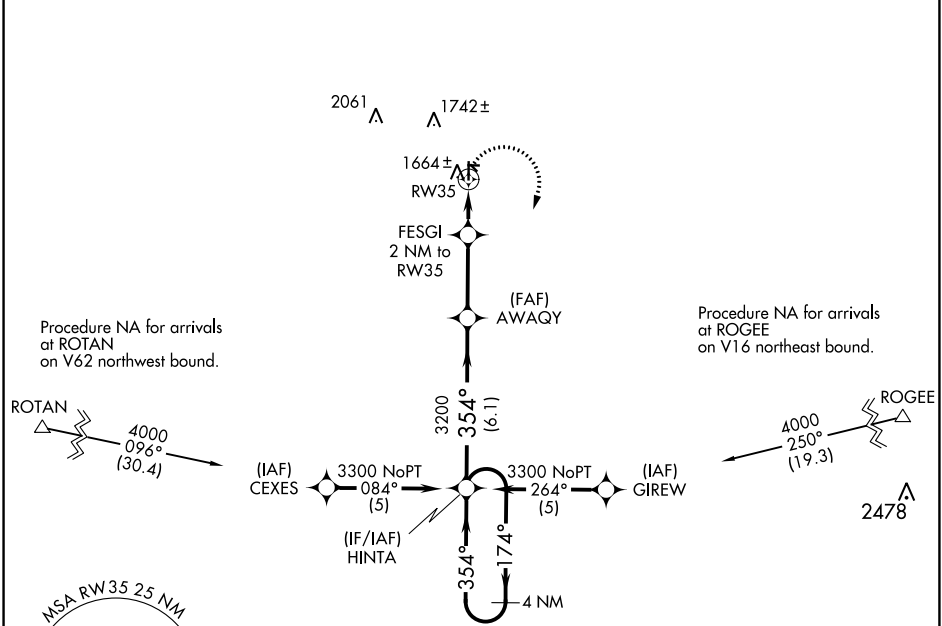
ARLEDGE FLD (F56)

RNP APCH-GPS

▽ Use Abilene Rgnl altimeter setting; when not received use Breckenridge altimeter setting and increase all MDAs 40 feet and visibility Cat C ¼ SM. Procedure NA at night. Circling NA to Rwys 8/26 and 13/31.

MISSED APPROACH: Climbing right turn to 3300 direct HINTA and hold.

ABILENE APP CON 127.2 282.3	UNICOM 122.8 (CTAF) 0
---------------------------------------	---------------------------------



SC-2, 28 NOV 2024 to 26 DEC 2024

SC-2, 28 NOV 2024 to 26 DEC 2024