

WESLACO, TEXAS

AL-6930 (FAA)

24137

VOR/DME MFE 117.2 Chan 119	APP CRS 080°	Rwy Idg TDZE Apt Elev 70	N/A N/A 70
--	------------------------	---------------------------------------	-------------------------

VOR-A
MID VALLEY (TXW)

DME required.

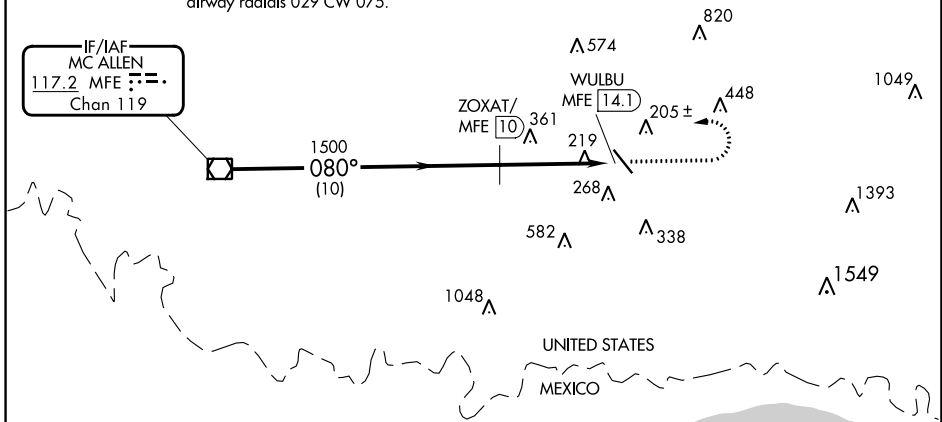
▼ When local altimeter not received, use McAllen altimeter setting and increase all MDA 40 feet.

▲ MISSED APPROACH: Climb to 1000 then climbing left turn to 2000 direct MFE VOR/DME.

AWOS-3PT 118.575	VALLEY APP CON 126.55 377.2	CLNC DEL 125.95	UNICOM 122.8 (CTAF)
----------------------------	---------------------------------------	---------------------------	-------------------------------

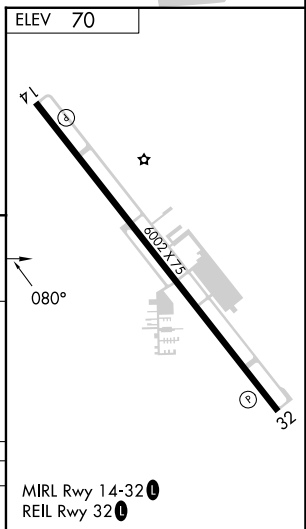
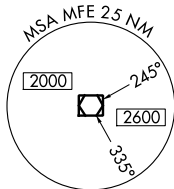
Procedure NA for arrival on MFE VOR/DME airway radials 029 CW 075.

IF/IAF
MC ALLEN
117.2 MFE
Chan **119**



SC-3, 28 NOV 2024 to 26 DEC 2024

SC-3, 28 NOV 2024 to 26 DEC 2024



MFE VOR/DME	1000	2000	MFE	
1600	↑	↻	☐	
1500	ZOXAT/MFE 10			
	WULBU MFE 14.1			
	10 NM			
	4.2 NM			
CATEGORY	A	B	C	D
☐ CIRCLING	620-1	550 (600-1)	700-1¾ 630 (700-1¾)	NA

MIRL Rwy 14-32
REIL Rwy 32

WESLACO, TEXAS
Orig-C 25JAN24

26°11'N-97°58'W

MID VALLEY (TXW)
VOR-A