

APP CRS 164°	Rwy Idg TDZE Apt Elev	N/A N/A 1380
------------------------	-----------------------------	---

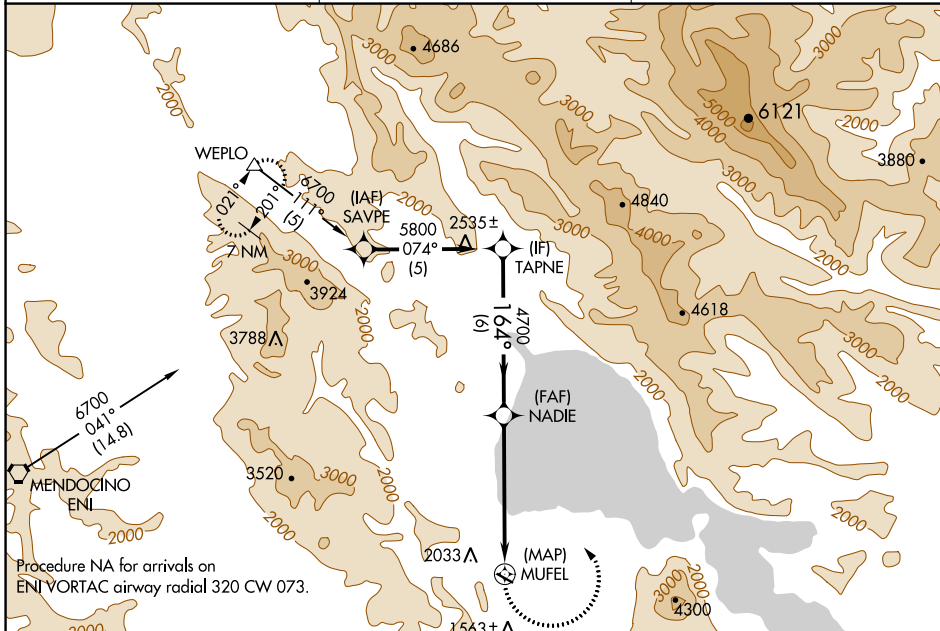
RNAV (GPS)-A

LAMPSON FLD (102)

NA Circling NA south of Rwy 10-28. DME/DME RNP-0.3 NA.
 Procedure NA at night. When local altimeter setting not received, use Ukiah altimeter setting and increase all MDA 560 feet.

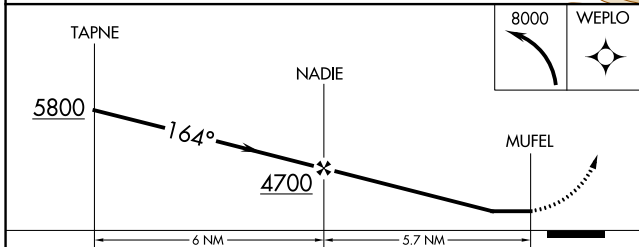
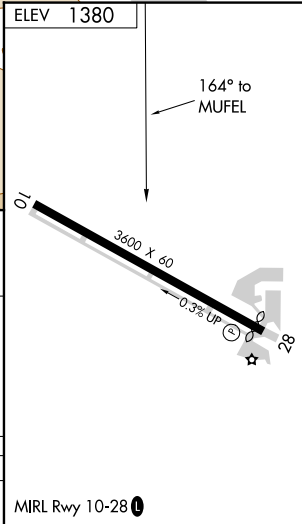
MISSED APPROACH:
 Climbing left turn to 8000 direct WEPLO and hold.

AWOS-3 118.35	OAKLAND CENTER 127.8 353.5	UNICOM 122.8 (CTAF) 0
--------------------------------	---	--



SW-2, 28 NOV 2024 to 26 DEC 2024

SW-2, 28 NOV 2024 to 26 DEC 2024



CATEGORY	A	B	C	D
CIRCLING	2580-1¼ 1200 (1200-1¼)	2580-1½ 1200 (1200-1½)		NA