

WAAS CH <b>70616</b> <b>W25A</b>	APP CRS <b>249°</b>	Rwy Idg TDZE Apt Elev	<b>5500</b> <b>689</b> <b>689</b>
--	------------------------	-----------------------------	---

# RNAV (GPS) RWY 25

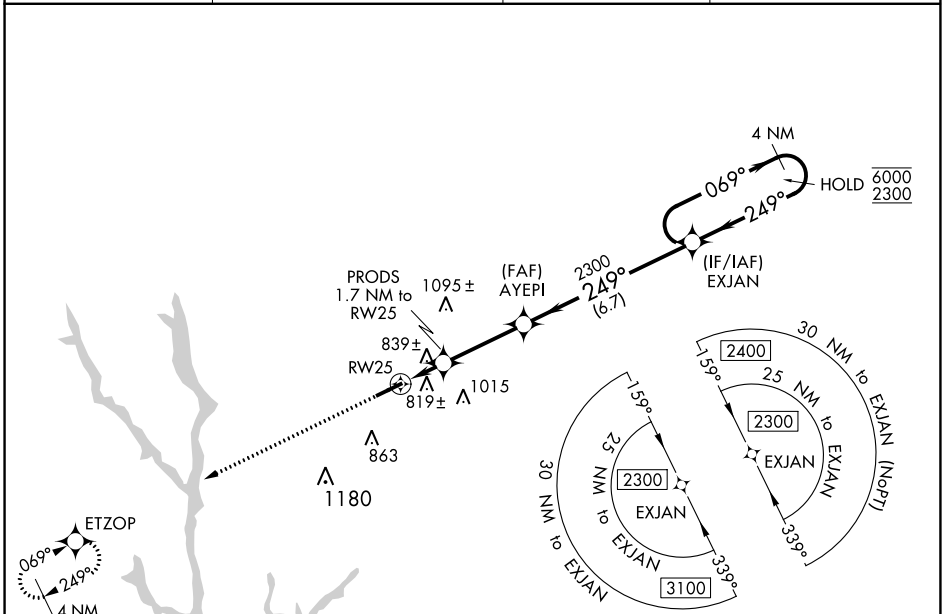
GREENE COUNTY RGNL (CPP)

RNP APCH - GPS.

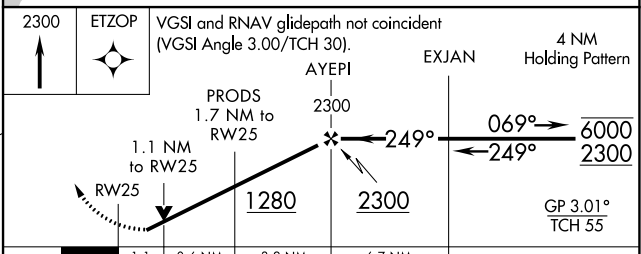
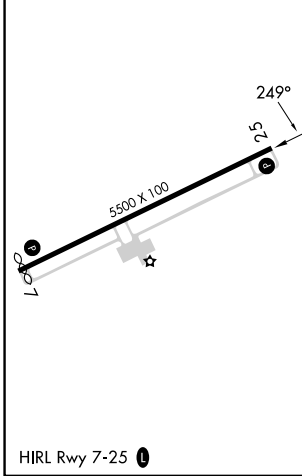
▼ Rwy 25 helicopter visibility reduction below 3/4 SM NA.  
 ▲ For uncompensated Baro-VNAV systems, LNAV/VNAV NA below -16°C or above 54°C.

MISSED APPROACH: Climb to 2300 direct ETZOP and hold.

AWOS-3 <b>124.525</b>	ATLANTA APP CON * <b>132.475 291.1</b>	GCO <b>121.725</b>	UNICOM <b>122.8(CTAF)</b>
--------------------------	---	-----------------------	------------------------------



ELEV 689	<b>D</b>	TDZE 689
----------	----------	----------



CATEGORY	A	B	C	D
LPV DA		981-7/8	292 (300-7/8)	
LNAV/VNAV DA		1065-1	376 (400-1)	
LNAV MDA	1080-1	391 (400-1)	1080-1 1/8	391 (400-1 1/8)
<b>C</b> CIRCLING	1140-1 451 (500-1)	1180-1 491 (500-1)	1320-1 3/4 631 (700-1 3/4)	1480-2 1/2 791 (800-2 1/2)

SE-4, 28 NOV 2024 to 26 DEC 2024

SE-4, 28 NOV 2024 to 26 DEC 2024