

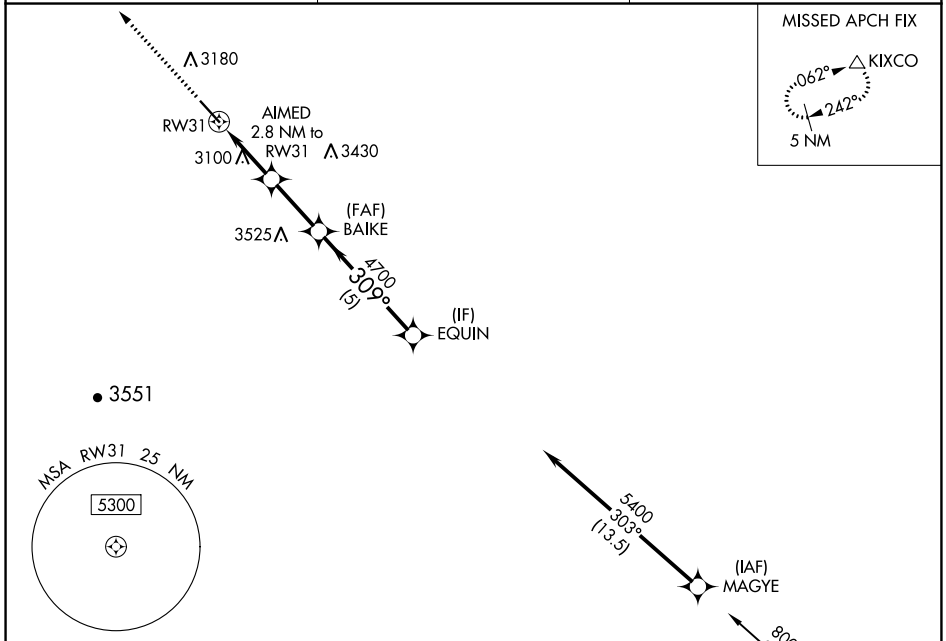
WAAS CH 50138 W31A	APP CRS 309°	Rwy Idg TDZE Apt Elev	5904 2981 2981
--	------------------------	-----------------------------	---

RNAV (GPS) RWY 31

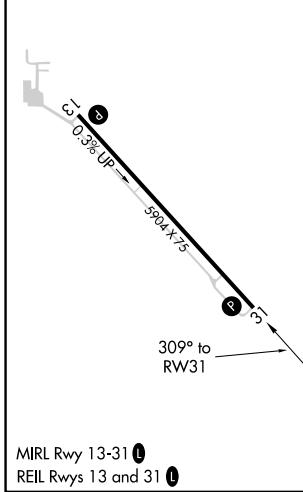
BAKER MUNI (BHK)

RNP APCH.	MISSED APPROACH: Climb to 3500 then climbing right turn 6000 direct KIXCO and hold.
<p>▼ For uncompensated Baro-VNAV systems, LNAV/VNAV NA below -27°C or above 54°C. When local altimeter setting not received, procedure NA.</p>	

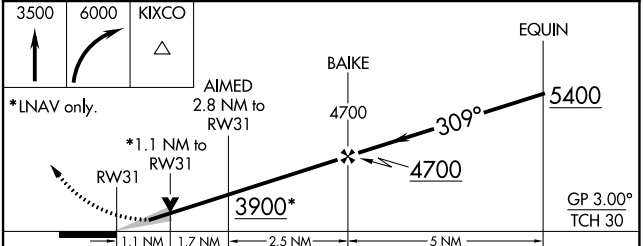
ASOS 135.475	SALT LAKE CENTER 126.85 305.2	CTAF 122.9 0
------------------------	---	------------------------



ELEV 2981	TDZE 2981
-----------	-----------



Procedure NA for arrivals at DIXLE on V491 southbound and on V120 eastbound.



CATEGORY	A	B	C	D
LPV DA		3231- ⁷ / ₈	250 (300- ⁷ / ₈)	
LNAV/VNAV DA		3267-1	286 (300-1)	
LNAV MDA		3360-1	379 (400-1)	
C CIRCLING	3540-1	559 (600-1)	3620-1 ³ / ₄ 639 (700-1 ³ / ₄)	3820-2 ³ / ₄ 839 (900-2 ³ / ₄)

NW-1, 28 NOV 2024 to 26 DEC 2024

NW-1, 28 NOV 2024 to 26 DEC 2024