

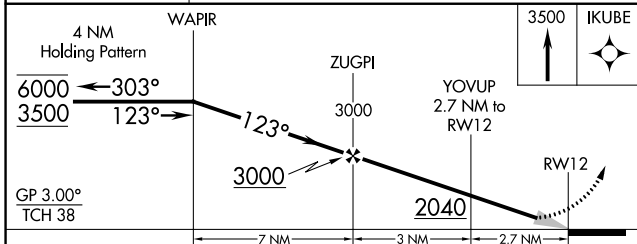
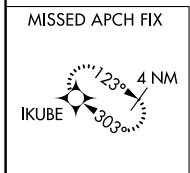
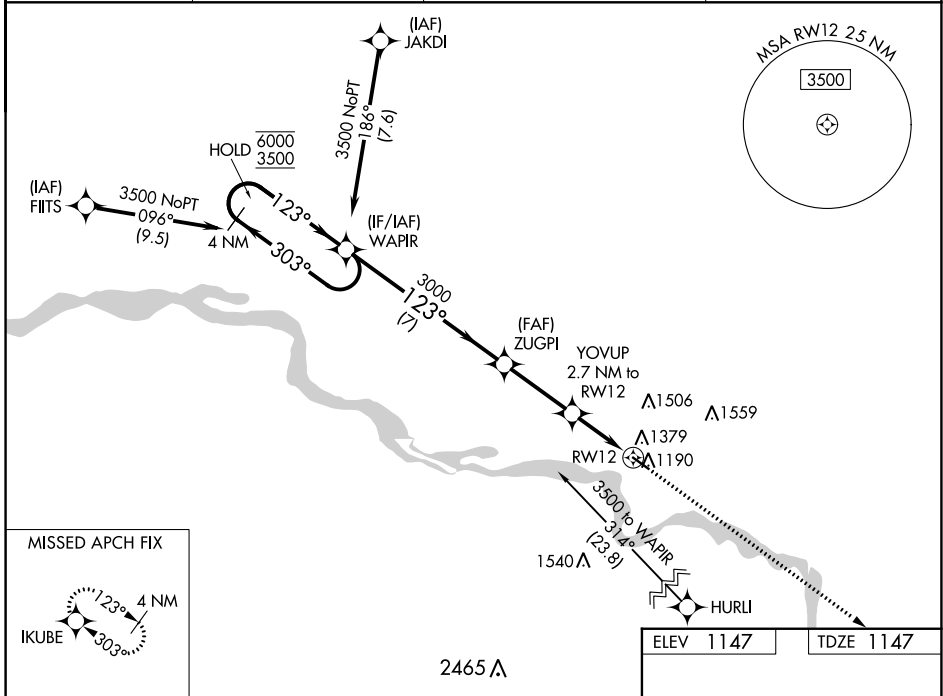
WAAS CH 72836 W12A	APP CRS 123°	Rwy Idg TDZE Apt Elev	4105 1147 1147
--	------------------------	-----------------------------	---

RNAV (GPS) RWY 12

HAROLD DAVIDSON FLD (VMR)

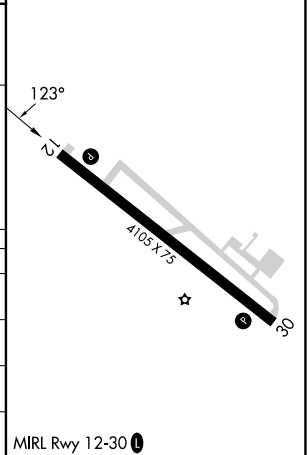
RNP APCH - GPS.		MISSED APPROACH: Climb to 3500 direct IKUBE and hold.
Baro-VNAV NA. Use Yankton altimeter setting.		

AWOS-3P 118.65	YKN AWOS-3PT 119.05	SIoux CITY APP CON★ 124.6 307.0	AUNICOM 122.8 (CTAF)
--------------------------	-------------------------------	---	--------------------------------



ELEV 1147	TDZE 1147
-----------	-----------

CATEGORY	A	B	C	D
LPV DA	1470-1 323 (400-1)			NA
LNAV/VNAV DA	1659-1½ 512 (600-1½)			NA
LNAV MDA	1700-1 553 (600-1)	1700-1⅝ 553 (600-1⅝)		NA
CIRCLING	1760-1 613 (700-1)	1900-2¼ 753 (800-2¼)		NA



NC-1, 28 NOV 2024 to 26 DEC 2024

NC-1, 28 NOV 2024 to 26 DEC 2024

MRL Rwy 12-30