

WAAS CH <b>93913</b> <b>W33A</b>	APP CRS <b>328°</b>	Rwy Idg TDZE Apt Elev	<b>3700</b> <b>1803</b> <b>1806</b>
--	------------------------	-----------------------------	---

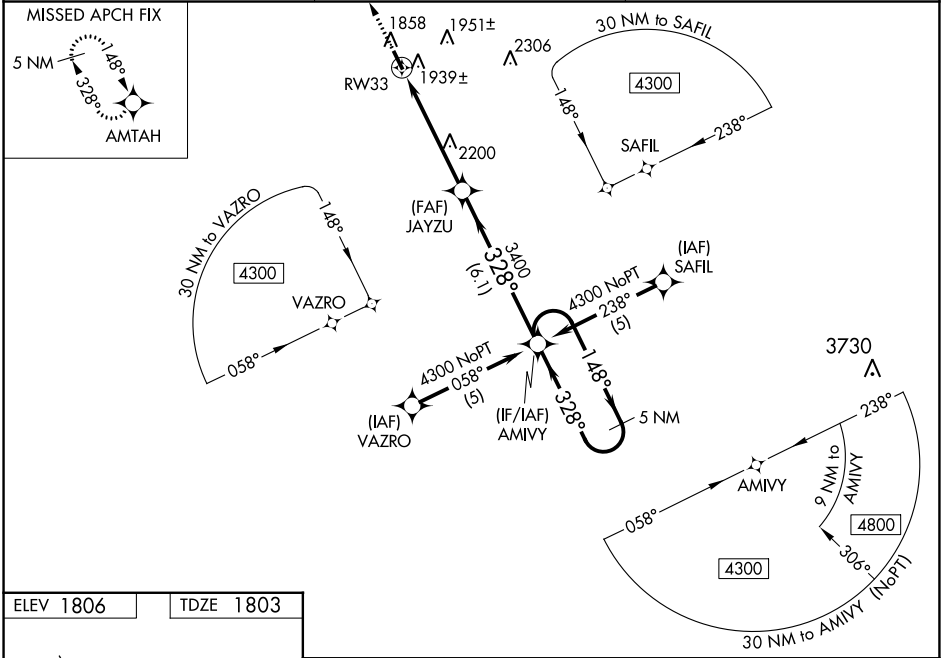
# RNAV (GPS) RWY 33

ALBION MUNI (BVN)

**⚠** Baro-VNAV NA when using Norfolk altimeter setting. For uncompensated Baro-VNAV systems, LNAV/VNAV NA below -18°C (0°F) or above 54°C (130°F). DME/DME RNP-0.3 NA. Visibility reduction by helicopters NA. When local altimeter setting not received; use Norfolk altimeter setting and increase all DA 106 feet, all MDA 120 feet, increase LPV all Cats visibility 1/4 mile, LNAV/VNAV all Cats visibility 1/2 mile, LNAV Cat B and Circling Cat B visibility 1/4 mile. VDP NA when using Norfolk altimeter setting.

**MISSED APPROACH:**  
Climb to 4300 direct AMTAA and hold.

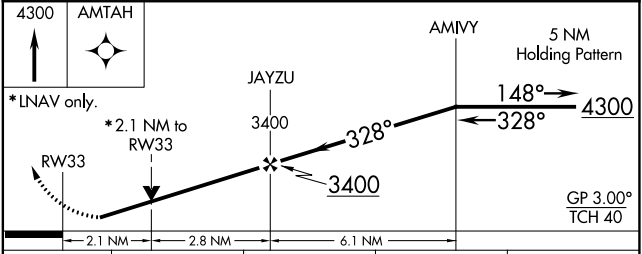
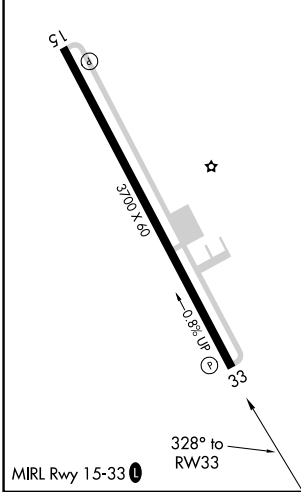
AWOS-3 <b>118.575</b>	MINNEAPOLIS CENTER <b>128.0 257.95</b>	CTAF <b>122.9 0</b>
--------------------------	---	------------------------



NC-2, 28 NOV 2024 to 26 DEC 2024

NC-2, 28 NOV 2024 to 26 DEC 2024

ELEV 1806	TDZE 1803
-----------	-----------



CATEGORY	A	B	C	D
LPV DA	2053-1	250 (300-1)		NA
LNAV/VNAV DA	2279-1 <sup>3</sup> / <sub>4</sub>	476 (500-1 <sup>3</sup> / <sub>4</sub> )		NA
LNAV MDA	2500-1	697 (700-1)		NA
CIRCLING	2500-1	694 (700-1)		NA