

WAAS CH 65923 W23A	APP CRS 227°	Rwy Idg TDZE 1218 Apt Elev 1219	5003
----------------------------------------	------------------------	-----------------------------------------------------	-------------

RNAV (GPS) RWY 23

CHEROKEE COUNTY RGNL (CNI)

RNP APCH-GPS.

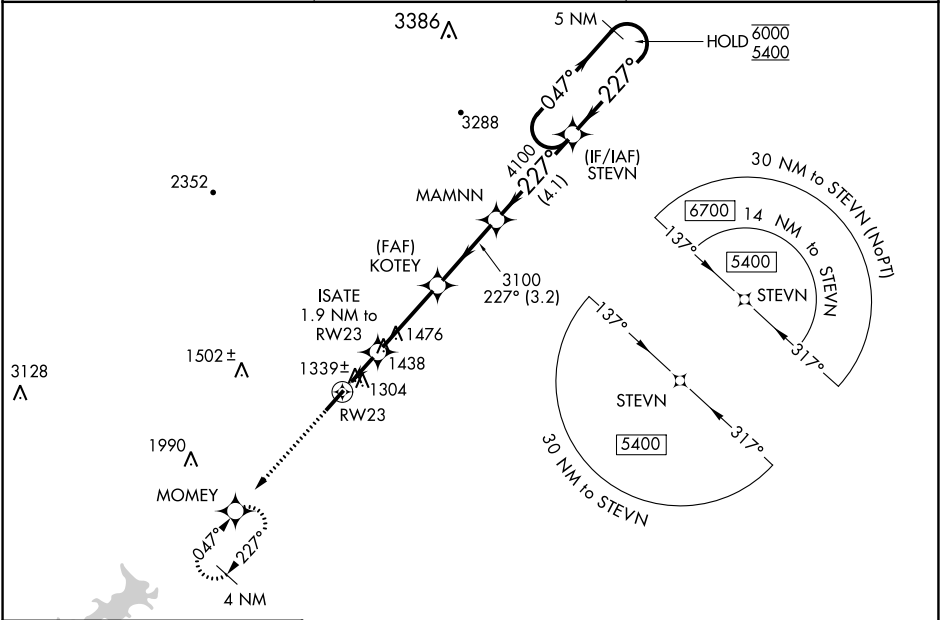
Rwy 23 helicopter visibility reduction below 1 SM NA. Straight-in Rwy 23 NA at night, Circling Rwy 23 NA at night.

MISSED APPROACH: Climb to 4000 direct MOMEY and hold, continue climb-in-hold to 4000.

AWOS-3PT
119,825

ATLANTA APP CON
121.0 268.7

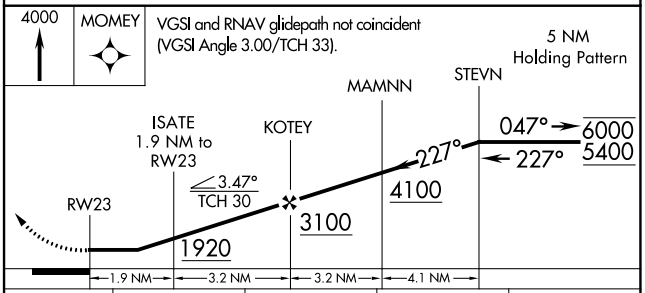
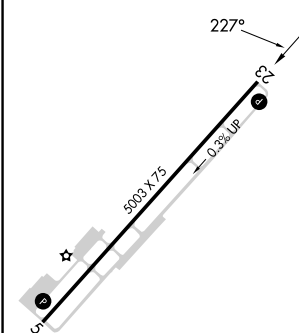
UNICOM
123.0 (CTAF)



SE-4, 28 NOV 2024 to 26 DEC 2024

SE-4, 28 NOV 2024 to 26 DEC 2024

ELEV 1219	TDZE 1218
-----------	-----------



CATEGORY	A	B	C	D
LP MDA	1600-1	382 (400-1)	1600-1 $\frac{1}{8}$ 382 (400-1 $\frac{1}{8}$)	NA
LNAV MDA	1740-1	522 (600-1)	1740-1 $\frac{1}{8}$ 522 (600-1 $\frac{1}{8}$)	NA
C CIRCLING	1740-1	521 (600-1)	1820-1 $\frac{3}{4}$ 601 (700-1 $\frac{3}{4}$)	NA

REIL Rws 5 and 23
MIRL Rwy 5-23