

WAAS CH <b>70436</b> <b>W03A</b>	APP CRS <b>038°</b>	Rwy Idg TDZE Apt Elev	<b>6001</b> <b>3976</b> <b>3979</b>
--	------------------------	-----------------------------	---

# RNAV (GPS) RWY 3

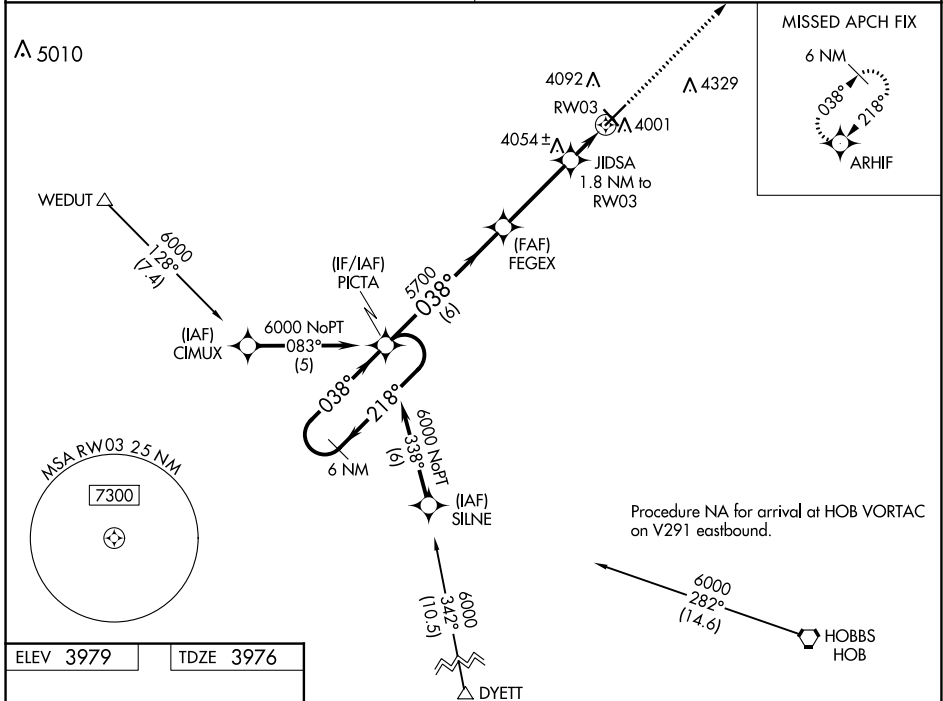
LEA COUNTY/ZIP FRANKLIN MEML (E06)

**Baro-VNAV NA. DME/DME RNP-0.3 NA. Use Hobbs altimeter setting; when not received, procedure NA. Helicopter visibility reduction below 1 SM NA. Night landing: Rwy 3, 12, 30 NA.**

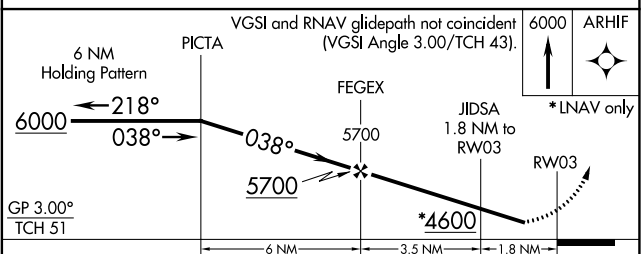
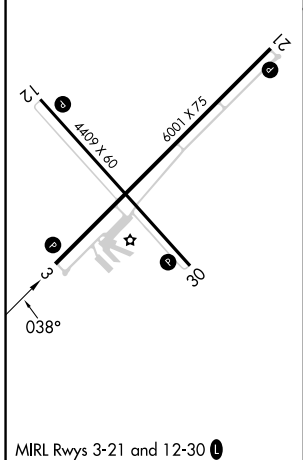
**MISSED APPROACH:** Climb to 6000 direct ARHIF and hold.

**FORT WORTH CENTER 133.1 298.95**

**UNICOM 122.8 (CTAF)**



ELEV 3979	TDZE 3976
-----------	-----------



CATEGORY	A	B	C	D
LPV DA	4314-1½	338 (400-1½)		NA
LNNAV/VNAV DA	4314-1½	338 (400-1½)		NA
LNNAV MDA	4400-1	424 (500-1)	4400-1¼ 424 (500-1¼)	NA
<b>C</b> CIRCLING	4480-1	501 (600-1)	4720-2¼ 741 (800-2¼)	NA

SW-1, 28 NOV 2024 to 26 DEC 2024

SW-1, 28 NOV 2024 to 26 DEC 2024