

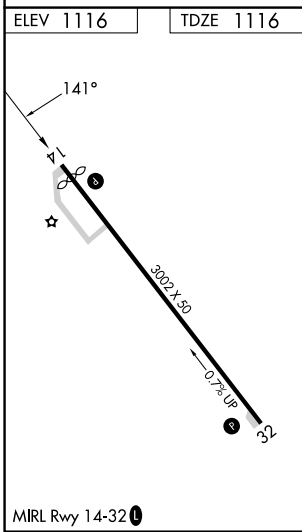
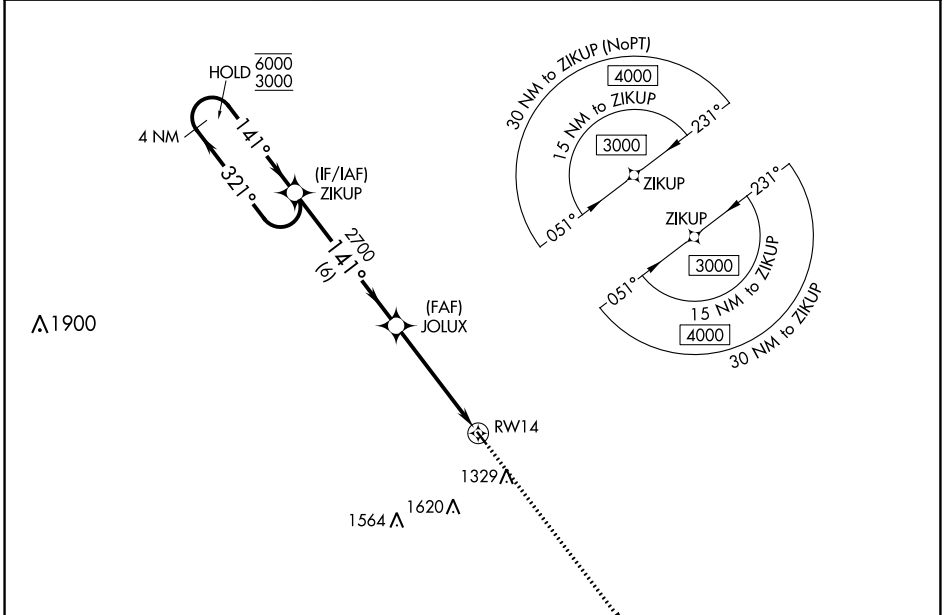
APP CRS	Rwy Idg	2827
141°	TDZE	1116
	Apt Elev	1116

RNAV (GPS) RWY 14

WINTERSET MUNI (3Y3)

RNP APCH.	MISSED APPROACH: Climb to 3000 direct JUNUG and hold.
⚠ NA Circling NA for Cat B southwest of Rwy 14-32. Procedure NA at night. ⚠ NA Rwy 14 helicopter visibility reduction below 1 SM NA. Use Osceola alimeter setting.	

I75 AWOS-3 120.975	DES MOINES APP CON 123.9 360.7	UNICOM 122.7 (CTAF) 0
------------------------------	--	---------------------------------



4 NM Holding Pattern ZIKUP 6000 ← 321° 3000 → 141°				VGSi and descent angles not coincident (VGSi Angle 3.00/TCH 32).		3000	JUNUG
		JOLUX 2700 3.00° TCH 40		RWY 14 6 NM 4.9 NM		↑	✦
CATEGORY	A	B	C	D			
LNAV MDA	1640-1	524 (600-1)	NA				
C CIRCLING	1640-1	1700-1	NA				
	524 (600-1)	584 (600-1)					

NC-3, 28 NOV 2024 to 26 DEC 2024

NC-3, 28 NOV 2024 to 26 DEC 2024