

WAAS CH <b>56440</b> <b>W06A</b>	APP CRS <b>058°</b>	Rwy Idg TDZE Apt Elev	<b>3396</b> <b>574</b> <b>575</b>
--	------------------------	-----------------------------	---

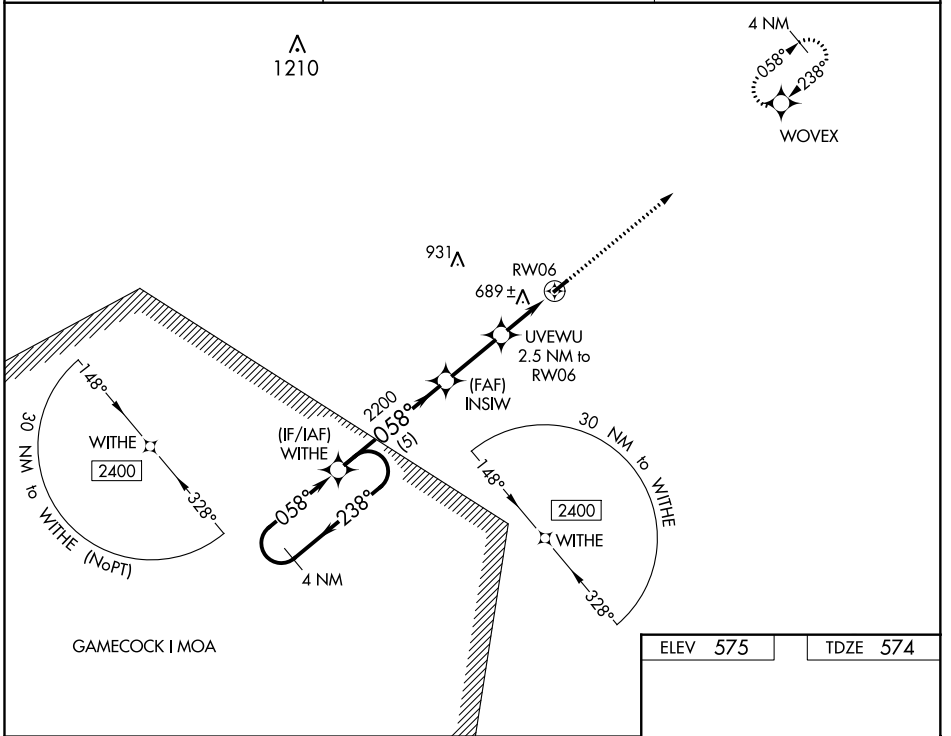
# RNAV (GPS) RWY 6

PAGELAND (PYG)

**Baro-VNAV NA. DME/DME RNP-0.3 NA. Use Charlotte/Monroe Exec altimeter setting. When Charlotte/Monroe Exec altimeter not received, use Charlotte/Douglas Intl altimeter setting and increase LPV DA to 943 feet and all visibilities 1/8 SM. Increase LNAV/VNAV DA to 1139 feet and all visibilities 1/4 SM. Increase all MDA 60 feet.**

**NA MISSED APPROACH:** Climb to 2400 direct WOVEX and hold.

EQY ASOS <b>135.775</b>	CHARLOTTE APP CON <b>120.05 307.8</b>	(CTAF) <b>122.9</b>
----------------------------	--	------------------------



SE-2, 28 NOV 2024 to 26 DEC 2024

SE-2, 28 NOV 2024 to 26 DEC 2024

ELEV 575	TDZE 574
----------	----------

**4 NM Holding Pattern**

WITHE

INSIW

UVEWU 2.5 NM to RW06

RW06

2400 WOVEX

\*LNAV only

GP 3.00° TCH 40

2400 ← 238° / 058° →

2200

\*1380

5 NM / 2.6 NM / 2.5 NM

3396 x 60

0.7% UP

058° to RW06

MIRL Rwy 6  
REIL Rws 6 and 24