

WAAS CH 40436 W35A	APP CRS 354°	Rwy Idg TDZE Apt Elev	3406 1435 1437
----------------------------------------	------------------------	-----------------------------	-------------------------------------------

RNAV (GPS) RWY 35

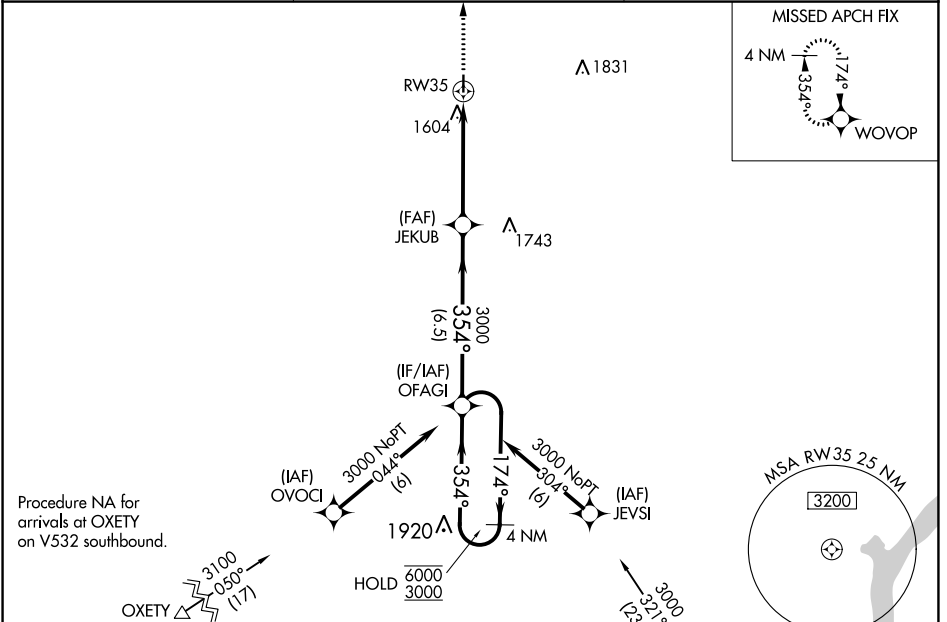
WASHINGTON COUNTY VETERAN'S MEML (K38)

RNP APCH - GPS.

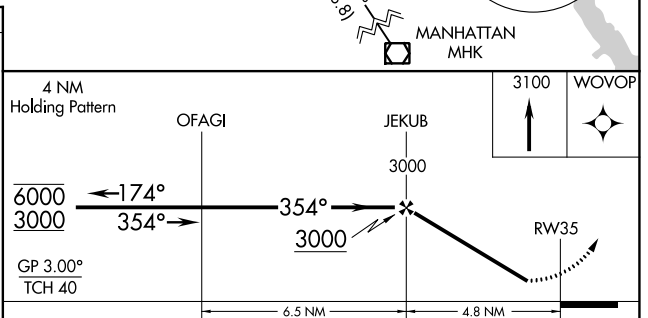
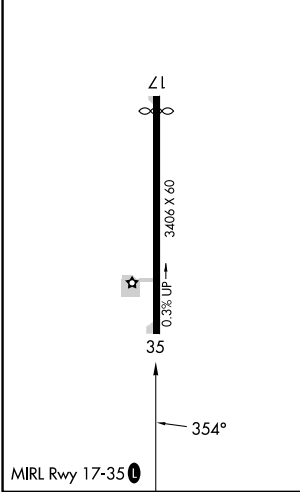
NA Circling Rwy 17 NA at night.
Rwy 35 helicopter visibility reduction below ¾ SM NA.
Baro-VNAV NA. Use Concordia altimeter setting.

MISSED APPROACH: Climb to 3100 direct WOVOP and hold.

CNK ASOS 123.825	KANSAS CITY CENTER 127.35 257.975	CTAF 122.9
----------------------------	---------------------------------------------	----------------------



ELEV 1437	TDZE 1435
-----------	-----------



CATEGORY	A	B	C	D
LPV DA	1762-1		327 (400-1)	NA
LNAV/VNAV DA	1827-1½		392 (400-1½)	NA
LNAV MDA	2020-1	585 (600-1)	2020-1¾ 585 (600-1¾)	NA
C CIRCLING	2020-1	583 (600-1)	2020-1¾ 583 (600-1¾)	NA

NC-2, 28 NOV 2024 to 26 DEC 2024

NC-2, 28 NOV 2024 to 26 DEC 2024